



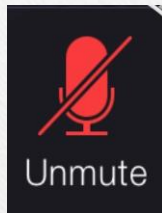
# International Student Pre-Departure Orientation

---

CALIFORNIA STATE UNIVERSITY LONG BEACH  
Center for International Education (CIE)  
International Students and Scholars

# Webinar Expectations

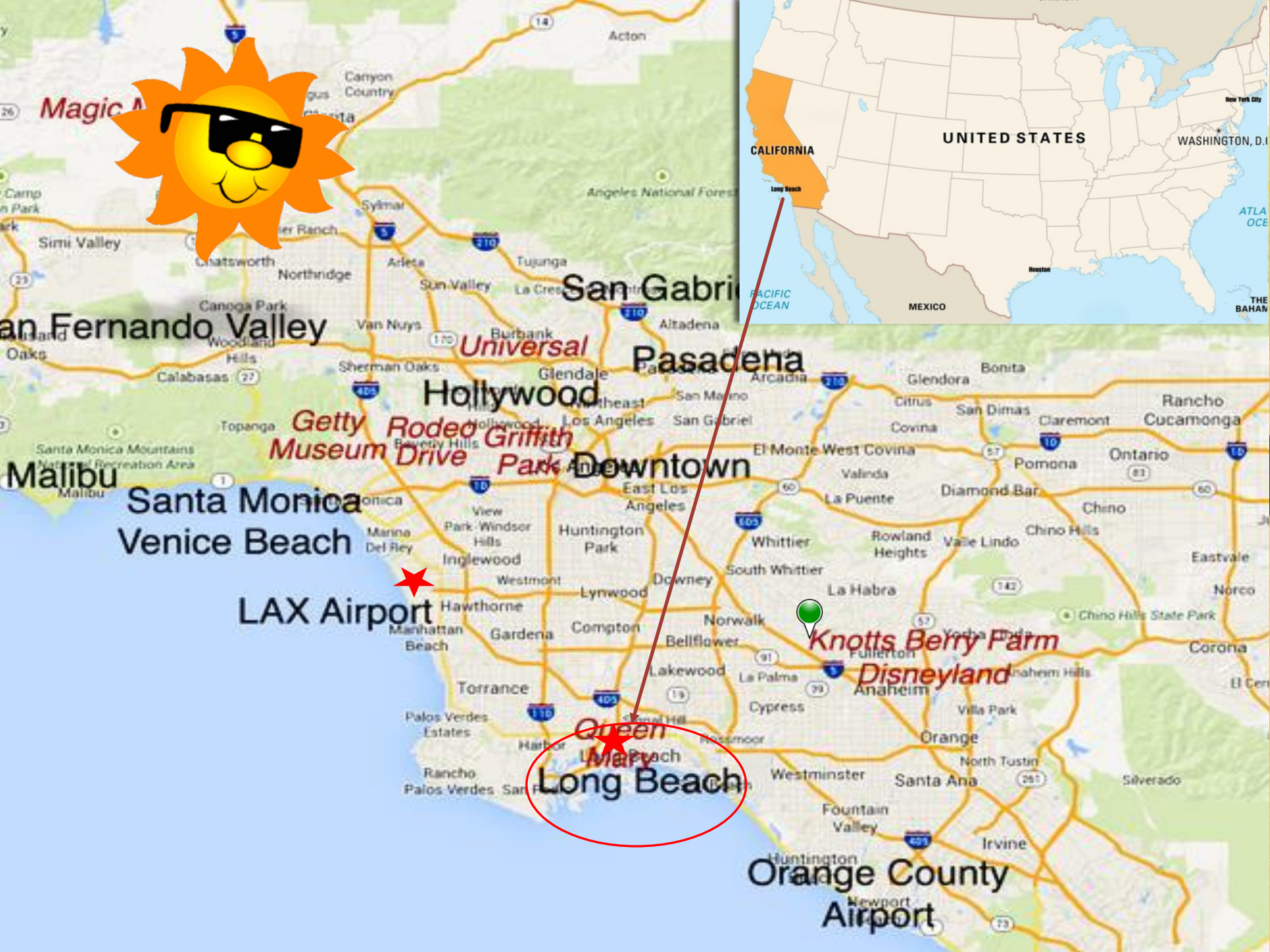
zoom



- Make sure your mic is muted.
- Unmute your mic only when the host gives permission.
- You will be able to use the participants chat box to type questions during our designated Q & A time.

# Overview

- Welcome & Introductions
- CANVAS  
overview for new International Students
- Before coming to the U.S.
- Arriving in the U.S.
- After arriving at CSULB
- Course Registration and Fee Payment
- Questions and Answers (Q&A)





Tells us about yourself!  
Add your answer in the  
chat

---

- What country are from?
- What major and academic level will you be starting in Spring 2025?
  - Example: Master's in Psychology
- As you prepare for your arrival to the CSU, Long Beach, what are you most excited about?



## JOIN YOUR FELLOW INTERNATIONAL STUDENTS IN CANVAS!

---

- In the coming days, you will be invited to join the CIE Canvas Course.
- Accept the invitation and use your CSULB Single Sign On (SSO) credentials to access the course thereafter:
  - Click on CANVAS
  - Select the course: *Center for International Education*

CALIFORNIA STATE UNIVERSITY

**LONG BEACH**





# Before Leaving Home

**Confirm Enrollment in CSULB**

**Visa & Immigration**

**Estimated Expenses**

**Health & Immunizations**

**Housing**







## Confirm Enrollment in CSULB

- ❑ Go to the [New Student Requirements](#) page.
- ❑ Complete action described in "Admissions and Enrollment Requirements" including:
  - ❑ "Next Steps" (for all students)
  - ❑ Purchase insurance (CIE students only)
  - ❑ International Admission documents (CIE students only)

## New Student Requirements

**Congratulations on your admission for Spring 2025!**  
Please complete the requirements listed below to ensure a smooth transition to CSULB.

**To attend CSULB for the Spring 2025 semester you are required to be attend Orientation in person on January 15th 2025.** The earliest an F-1 student can enter the US for Spring 2025 is December 22nd, 2024.

<b>Admissions and Enrollment Requirements</b>	▼
Obtain Your CSULB I-20	▼
Apply for an F-1 Visa	▼
Immigration Check-In	▼
Mandatory New International Student Orientation	▼



## Visa & Immigration

- ❑ Request an I-20 from CSULB.
- ❑ Pay **SEVIS I-901 fee** (\$350) and obtain your **F-1 visa**.
- ❑ You will be expected to be in the U.S. to attend the International Student orientation Scheduled for **January 15th, 2025**.

### International Student Life Cycle (F-1/M-1)



U.S. Immigration  
and Customs  
Enforcement

**1** Apply to a Student and Exchange Visitor Program (SEVP)-Certified School

Student applies and is accepted to an SEVP-certified school.



**2** Receive a Form I-20, "Certificate of Eligibility for Nonimmigrant Student Status"

A student's Student and Exchange Visitor Information System (SEVIS) record is created and the student is then issued a Form I-20 by the designated school official (DSO) at the SEVP-certified school they have chosen to attend.



**3** Pay the I-901 SEVIS Fee

Student must pay the I-901 SEVIS Fee at FMJFee.com.



**6** Maintain Status During Program Study

Student must take a full course of study, not work without prior authorization and speak with their DSO if they cannot finish classes before their program end date, or have any other concerns about maintaining lawful status.



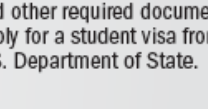
**5** Arrive in the United States

Student arrives no more than 30 days before their program start date and presents their Form I-20 and valid student visa to U.S. Customs and Border Protection at the port of entry.



**4** Apply for Student Visa

Student brings their Form I-20 and other required documents to apply for a student visa from the U.S. Department of State.





# Estimated Cost of Attendance

Estimated Expenses for a regular semester (Fall/Spring) – living alone  
Undergraduate enrolled in 12 units / Graduate enrolled in 9 units

- Your Final Cost of Attendance will be influenced by the **total number of units** you take, and your **individual lifestyle choices**.
- [View Cost of Attendance | California State University Long Beach \(csulb.edu\)](#) for more details
- Refer to the [CSULB Financial Affidavit Form](#) For a full breakdown of the expected cost.

## General Estimated Expenses in U.S. Dollars per semester and living alone

Expenses	Undergraduate	Graduate
Tuition & fees	\$8,715	\$8,217
Insurance (Spring/summer)	\$1,037	\$1,037
*Estimated Living Expenses (includes supplies & personal expenses)	\$12,123	\$13,875



# Budgeting Resources

Proving that you can pay for tuition and living expenses in the U.S. ***doesn't always prepare you*** for the financial decisions and potential challenges that can occur when you get here.

This is why you need to make a budget.

Do not rely on expecting to get a part-time job on campus.

- **Video: How to Build a Budget**
- [CSULB Cost of Attendance Breakdown](#)
- [CSULB Day 1 Textbook Access \(D1TA\)\(youtube.com\)](#)
- [How to Save Money on Groceries](#)  
Cheaper grocery stores:
  - Grocery Outlet
  - Food4Less
- Cheaper stores for apartment furnishings and home goods:
  - Walmart
  - Target
  - Goodwill
  - Big Lots
  - Amazon.com



## Monthly Student Budget

- ❑ Your monthly student budget may include additional expenses not listed in the I-20/Financial Affidavit. These expenses depend on your *individual choices and personal lifestyle*.
- ❑ Make sure to include **summer expenses** in your financial planning for the academic year.
- ❑ Review the overall cost of living in the U.S. [Cost of Living in United States - 2024 prices \(expatistan.com\)](https://www.expatistan.com) to avoid sticker shock.
- ❑ Do not rely on expecting to get a job on campus as this is not guaranteed.

### MONTHLY EXPENSES: GRADUATE INTERNATIONAL STUDENT LIVING OFF CAMPUS (WITH ROOMMATES)

Rent	<u>\$850</u>
Utility Bills	<u>Included in rent</u>
Phone Bill	<u>\$37</u>
Car Insurance	<u>\$261</u>
Gas for Car	<u>\$200</u>
Public Transport	<u>\$0</u>
Groceries	<u>\$250</u>
Restaurants/Bars	<u>\$200</u>
Clothes/Items	<u>\$300</u>
Entertainment	<u>\$30</u>
Subscriptions	<u>\$25</u>
Total Spend:	<u>\$2,153</u>
Hours Worked on	
Campus:	<u>68 (17 per week)</u>
Total Earned:	<u>\$1088 (Before Taxes)</u>

### MONTHLY EXPENSES: UNDERGRAD INTERNATIONAL STUDENT LIVING ON CAMPUS (DORMS)

Rent	<u>\$1,700</u>
Utility Bills	<u>Included in Rent</u>
Phone Bill	<u>\$55</u>
Car Insurance	<u>\$110</u>
Gas for Car	<u>\$120</u>
Public Transport	<u>\$20</u>
Groceries	<u>Dining Hall Included w/ Rent</u>
Restaurants/Bars	<u>\$400</u>
Clothes/Items	<u>\$100</u>
Entertainment	<u>\$70</u>
Subscriptions	<u>\$20</u>
Total Spend:	<u>\$2,595</u>
Hours Worked on	
Campus:	<u>80 (20 per week)</u>
Total Earned:	<u>\$1280 (Before Taxes)</u>



# CANVAS

## The Center for International Education

---

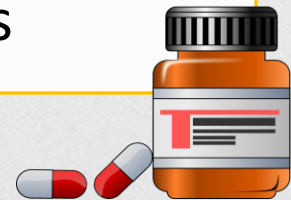
- The Financial Literacy section within CANVAS will offer you information on:
  - Estimated Cost to attend CSULB
  - Overview of the cost of living in the U.S.
  - Budgeting tools.
  - Access to Financial Literacy 101.
  - Scholarship information.



# Medical/Health

## Health Care Preparation

- Purchase Insurance
- Gather your immunization documents
- Complete any medical and dental check-ups
- Prepare any extra personal medications



# Health Insurance

## CSULB Health Insurance Requirement

### Insurance Costs

- Spring/Summer 2025 Policy Cost: **\$1,037**
- **Dental Work and Vision care are NOT covered.**



### Waivers **only** permitted for:

- Certain government sponsored plans (e.g. SACM, Oman, Lanekassen, Fulbright, etc.)
- Plan under a parent or spouse employed by a U.S. company

**Insurance Policy Details (including your policy ID number) will be emailed to you directly from GeoBlue around January 10th 2025**





# Where and When To Purchase Health Insurance

Purchase Insurance at [www.jcbins.com](http://www.jcbins.com)

Video instructions on how to purchase insurance:

<https://www.youtube.com/watch?v=eTa9MAQyyQo>

**Insurance should be purchased NOW**

*You cannot register for Spring courses until insurance is purchased*

**Undergrad Students: You must purchase insurance well in advance of participating in SOAR.**





# Immunizations/Vaccinations

Review Immunization requirements in full at [CSULB Student Immunizations](#)

Upload your Immunizations in your Student Portal (<https://sso.csulb.edu>) or via Student Health Services chiclet:

- Measles/Rubella (MMR)
- Tuberculosis (TB) test within the past year
  - QuantiFERON TB test is highly recommended
  - Offered on campus - appointment required
- If you are 18 or younger: Hepatitis B
- If you'll live on-campus: Meningitis

**Questions about Vaccine Requirements?**

**Email: [shs-vaccine@csulb.edu](mailto:shs-vaccine@csulb.edu)**



Did you know?

# CSULB is a NON-SMOKING CAMPUS

---

B R E A T H E



CSULB students have decided to commit to clean and healthy educational living and working environment for all members of the campus community. Everyone has a right to breathe fresh air, therefore, CSULB is now a **100% smoke, vapor, and tobacco-free** campus.

[csulb.edu/livewell/breathe](http://csulb.edu/livewell/breathe)

Did you know?

# CSULB has Accessibility & Support



CSULB offers a variety of Accessibility Services & Initiatives  
Student Wellness Resources

CSULB Accessible Technology Initiative (ATI)

Accessible Instructional Materials (AIM) Center

Bob Murphy Access Center (BMAC) Supporting students with  
disabilities



Direct contacts:

[Rachelle.Ang@csulb.edu](mailto:Rachelle.Ang@csulb.edu) @ Counseling and Psychological Services

[bmac@csulb.edu](mailto:bmac@csulb.edu) @ Bob Murphy Access Center

[wellness@csulb.edu](mailto:wellness@csulb.edu) @ Student Health Center





# Housing

## On-Campus Housing

For students who have been accepted to on-campus housing

Spring 2025 Move In Date: January 14 at 11:00am

<b>Website</b>	<b><a href="http://www.csulb.edu/housing">www.csulb.edu/housing</a></b>
<b>E-mail address</b>	<b><a href="mailto:housing@csulb.edu">housing@csulb.edu</a></b>
<b>Phone number</b>	<b>+1 (562) 985-4187</b>

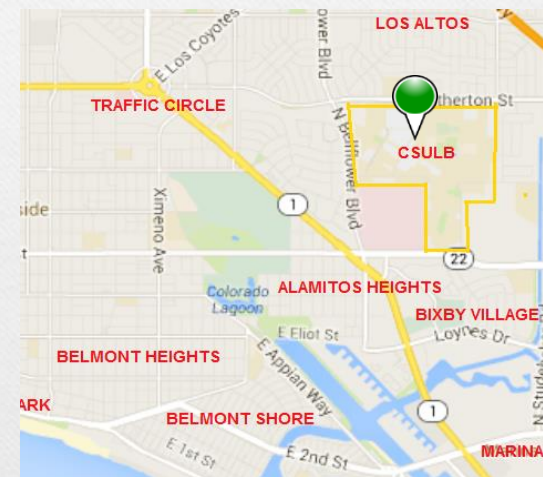




# Off Campus Housing

## Off-Campus Housing

- Off-Campus Housing (temporary stay, apartments, homestays, etc.):  
<https://calstatelongbeach.rentcollegepads.com/>
- Off-Campus Resources: [Off-Campus Resources | California State University Long Beach \(csulb.edu\)](#)
- Facebook Groups:
  - [CSULB Roommate Finder | Facebook](#)
  - [Facebook- CSU Long Beach Housing/ Roommates](#)
  - [Facebook- Cal State Long Beach Housing Sublets & Roommates](#)



The above website is for reference.  
CSULB does not endorse any particular off-campus website or accommodation.

\*Scams unfortunately happen. To protect yourself from rental scams please read this helpful [guide](#). When purchasing second-hand items from sellers on platforms like Facebook Marketplace or Craigslist please only use payment methods like Paypal Goods and Services or Venmo Goods and Services.



# Packing

## On-Campus Housing

---

### What you Need:

- Blankets, Bedspreads, and Sheets
- Sheet size: Twin extra long 203.2cm x 86.36cm
- Pillowcases
- Towels
- Study lamps (non halogen)

### Room Furniture Included:

- Bed
- Dresser
- Desk
- Chair
- Bookshelf
- Trash can
- Closet
- Mirror for each resident

1. Bring these items with you, or
2. Purchase before arriving at campus for delivery at [Amazon@theBeach](#), or
3. Purchase after arriving at campus at a store nearby



# CANVAS

## The Center for International Education

---

- The Housing section in CANVAS provides information on:
  - On-Campus Housing
  - Off-Campus Housing
  - Finding roommates
  - Furnishing your home
  - Preventing housing Scams





## Arriving in the U.S.

When am I allowed to enter?

What happens at the port of entry?

How to get to CSULB?

Cellphone services



# Arriving in the U.S.



## When am I allowed to enter?

You can only enter the U.S. up to 30 days before your program start date on your I-20.

Expect to be in the U.S. on or before January 15, 2025

Look at "Earliest Admission Date" on your I-20.

### PROGRAM OF STUDY

**EDUCATION LEVEL**

BACHELOR'S

**MAJOR 1**

Physics, General 40.0801

**MAJOR 2**

None 00.0000

**PROGRAM ENGLISH PROFICIENCY**

Required

**ENGLISH PROFICIENCY NOTES**

Student is proficient

**EARLIEST ADMISSION DATE**

22 DECEMBER 2024

**START OF CLASSES**

21 JANUARY 2025

**PROGRAM START/END DATE**

21 JANUARY 2025 - 21 JANUARY 2029





# Arriving in the U.S.

## What happens at the port of entry?



Prepare to show these documents to the  
Customs and Border Protection Officer:

- I-20 Form
- Acceptance letter
- Evidence of financial support
- Passport valid for at least 6 months
- Valid F-1 visa (except Canadian citizens)

**\*Keep these documents in your carry-on bag for immediate access.**

**\*\*Have hard copies and electronic copies of your documents in  
an alternative place**



# Arriving in the U.S.



Questions the border officer might ask

- What is the purpose of your visit?
- How long is your stay?
- Where will you be staying?
- How will you support yourself financially?

**study**



The CBP officer will check to see if your documents match the **purpose** of your visit.

[Watch this Video: You've Arrived | U.S. Customs and Border Protection\(cbp.gov\)](https://www.cbp.gov)



# Arriving at LAX

## Getting to Long Beach, CA



There is no pickup service from the school,  
but it is easy to find transportation from LAX to Long Beach:

- **39 km** from LAX to CSULB
- Taxi: **\$80-\$90** (prices may change)
- Uber and Lyft : **\$40 - \$50** (prices may change)



- **Use LAXit bus to get to rideshare area.**



- Watch this video of **getting transportation at LAX Intl Arrivals**:  
<https://www.youtube.com/watch?v=hyc-8HEefWo>



# CANVAS

## The Center for International Education

---

- The Transportation & Arrival sections in CANVAS provides information on:
  - Transportation options from the airport to CSULB
  - Commonly used transportation options for your day-to-day activities.



# After Arriving at CSULB

---

**Immigration Check-in**

**Mandatory International Student Orientation**

**Course Registration**

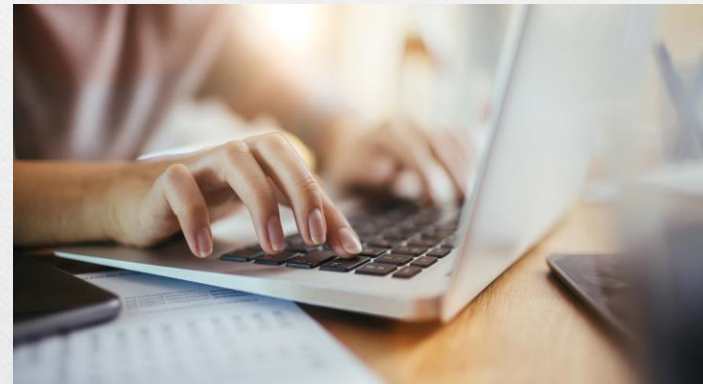
**Tuition & Fee Payment**



# MANDATORY CIE IMMIGRATION CHECK-IN

**You must be physically present  
in the U.S.!**

- Validate your F-1 immigration record in the U.S.
- Complete the CIE Immigration Check-in in the CIE Canvas Course upon arriving to the U.S.
- The online Immigration Check-in will open on **December 23rd, 2024**.
- Your recent I-94 , copy of F1 Visa, passport and CSULB I-20 will be required.



**A Check-in hold will be placed on your student record if you fail to do Check-In for immigration**





# Mobile Phone Services

- **A valid U.S. phone number is required for international students.**  
**You are responsible for being able to receive important information.**
- CSULB is partnering with two SIM Card providers. Both services offer initial complementary free services from 3-4 weeks, a month-to-month fee for service will be available thereafter with easy cancelation. For more information visit their websites below.



Pre-order a FREE SIM card and receive a U.S. phone number before departure.

[Order Free SIM - Long Beach University - StudentSIMS](#)  
[OR https://studentsims.com/csulb/](https://studentsims.com/csulb/)



Pick up your FREE SIM CARD upon arrival in our office FND 185B or at the Resource Fair on Orientation Day.

[campusSIMS](#)



## Monitor your Student Email

---

**Regularly check this email account:**

**[Your.Name@student.csulb.edu](mailto:Your.Name@student.csulb.edu)**

**Tell your friends too!**

**All immigration and school-related mail  
will be sent there**



# MANDATORY INTERNATIONAL STUDENT ORIENTATION

## Topics

- Maintain valid F-1 Visa Status
- Employment & Internship rules
- Campus Life & Academic expectations
- Living in the United States
- Light refreshments provided

## Transfer & Freshman Student Orientation

- January 15, 2025
- Location: TBD
- Time: 9:00 AM –11:30 AM

## Graduate Student Orientation

- January 15, 2025
- Location: TBD
- Time: 9:00 AM - 11:30 AM

[Campus Map](#)





# International Student Week Events

<b>Wednesday January 15</b>	<b>Thursday January 16</b>	<b>Friday January 17</b>
<p><u>9:00 am – 11:30 am</u> <b>International Student Orientation</b> Location: TBD (In Person)</p> <p><b>Curricular Practical Training (CPT) Information Session</b> COE session afterwards Location: TBD</p>	<p><u>Time: TBD</u> <b>On-Campus Work Information Session</b> Online</p> <p><u>Time: TBD</u> <b>Academic &amp; Cultural Success</b> Location: TBD</p>	<p><u>Time: 10 AM – 12 PM</u> <b>International Student Safety &amp; Title IX Webinar</b> Zoom Online</p>



# Course Registration Advising

## UNDERGRADUATE STUDENTS

- **SOAR Orientation**: A registration hold is placed on CSULB record if you don't attend and sign up.
- **All Spring 2025 course registration** will take place during with your **academic advisor**.

## GRADUATE STUDENTS

- All course registration advising for will be available through your **graduate advisor**.

Review [Key Dates and Deadlines | California State University Long Beach](#)  
([csulb.edu](http://csulb.edu))



# F1 Regulations for Enrollment

[www.csulb.edu/international/current-students](http://www.csulb.edu/international/current-students)

## Undergraduates

- Full time enrollment - at least 12 units every semester (at least 9 units **in person/hybrid**).
- Part time enrollment requires approval from International Student Advisor.
- **Only 1 online** course per semester counts toward full time enrollment.

## Graduates

- Full time enrollment - at least 8 units every semester (at least 6 units **in person/hybrid**).
- Part time enrollment requires approval from International Student Advisor.
- **Only 1 online** course per semester counts toward full time enrollment.

**Hybrid courses = Combination of In person & Online instruction**

**Online courses = No In person meeting times**



# MyCSULB – Holds

## Registration Holds & To Do List

**Academics**

My Class Schedule  
Shopping Cart  
Degree Planner

other academic... ▾ ⓘ

**Personal Information**

Student Photo

**Contact Information**

Mailing Address      Home Address

**Holds**

Prevent all enrollment actions

**Details ▶**

**To Do List**

English translation of diploma  
Official Academic Record  
Official diploma or degree  
Translation of academic record

**More ▶**

- Health Insurance
- Admission Documents
- Check-in Hold April 1, 2025

CIE Admissions holds: [cie-admission@csulb.edu](mailto:cie-admission@csulb.edu)

Health Insurance & Check-In holds: [cie-student@csulb.edu](mailto:cie-student@csulb.edu)

Admissions, Financial, Enrollment, etc: Find "[Beach Central](#)" (Google search)

CALIFORNIA STATE UNIVERSITY  
**LONG BEACH**

---

# Student Financial Services

**Cashiering & Student Account Services**



# Student Financial Services

- We manage tuition and fee calculation
- We receive & apply payments
  - ✓ Individual Payments
  - ✓ Installment Plans
  - ✓ Financial Aid
  - ✓ Third-Party Sponsor Payments
  - ✓ College Savings Plan Payments
- We issue refunds and financial aid disbursements
- We issue tuition tax document 1098-T

# MyCSULB and Student Financial Services

- View Charges Due and Account Activity
- Make Payments
- Enroll in Installment Payment Plans
- Sign Up for E-Refund
- View & Download 1098-T tax documents

# Tuition and Fees

## Tuition at a CSU

- Basic tuition is not charged per-Unit
- Based on **enrollment status**
  - Half-Time or Less (0 – 6 units)
  - Greater than Half-Time (7 units or more)
- “Resident” – refers to CA residents
- *Non-Resident* tuition is in addition to the basic Tuition Fee and is charged on a per-unit basis (\$396 per unit). (Out-of-state or International Students)

# Payment Options

- When paying at the Cashier's Office
  - ✓ Cash
  - ✓ Check or Money Order
  - ✓ Debit ATM Card
- When paying online
  - ✓ Credit Card (2.65% fee)
  - ✓ E-Check
  - ✓ Foreign Currency - Convera

# How to Pay

- Select the "Make a Payment" link below the "Finances" section of the Student Center

The screenshot displays the Student Center interface for California State University Long Beach. The top navigation bar includes the university logo and name. The main content area is divided into several sections:

- Academics:** Features a "This Week's Schedule" table with columns for CLASS, SCHEDULE, and DEADLINES. Below the table are links for "Weekly Schedule" and "Enrollment Shopping Cart".
- Finances:** Contains an "Account Summary" showing a balance of \$3,518.00. A red arrow points to the "Make a Payment" link in the "My Account" sub-section.
- Search and Navigation:** Includes a search bar and a list of navigation options such as "Degree Planner", "Enroll", and "My Academics".
- Right Sidebar:** Contains sections for "Search for Classes", "View My Messages", "Holds", "To Do List", "Enrollment Dates", "Advisor", and "Campus Links".

CLASS	SCHEDULE	DEADLINES
JOUR 240-04 LEC (12259)		
JOUR 311-04 LEC (10635)		
JOUR 411-01 LEC (7274)		
JOUR 418-01 LEC (10597)		

**Account Summary (See \* link below)**

- Due Now 0.00
- Future Due 3,518.00

**You owe 3,518.00.**  
Currency used is US Dollar.

[Make a Payment](#)

[\\*Important Student Fee Information](#)

**My Account**

- Account Inquiry
- E-Refund Signup
- Make a Payment**

**Financial Aid**

- View Financial Aid
- Accept/Decline Awards

# Paying with Foreign Currency - Convera

After selecting “**Foreign Currency**” as the payment method, you will be taken to the Convera website to complete your transaction.

Start the process **early** to give time for Convera to make the payment **deadline!**

The screenshot shows the Convera website interface. At the top, the Convera logo is on the left, and navigation links for "Make your payment", "Track your payment", and "Tips & FAQs" are on the right. Below the navigation, a banner features the text "PAY STUDENT FEES WITH YOUR HOME CURRENCY" over a background image of three students. A central white form contains a dropdown menu for "Paying fees from", a field for "Amount Due" set to "USD", and a "Get a quote" button. To the right of the form is the California State University Long Beach seal. Below the form, three key benefits are listed: "Trusted by education institutions around the world", "Pay in the currency of your choice from over 200 countries and territories", and "Pay on the move direct from your smartphone or tablet". At the bottom, three more benefits are listed: "Easy Payment Options", "Peace of Mind", and "Track Your Payment".

# Payment Plans

What if I can't pay my balance all at once, do you have payment options?

- Yes, we offer installment plans.
- You can sign up online through MyCSULB. Installment plans for basic and non-resident tuition are available through the 4<sup>th</sup> week of the semester, BUT students must enroll before their assigned payment deadline and adhere to their assigned due dates.

# When is the Spring 2025 Payment Due?

- The payment deadline is **January 8<sup>th</sup>** – full payment or enroll & be current in a payment plan
- If you register after January 8<sup>th</sup>, fees will be due the **next day**



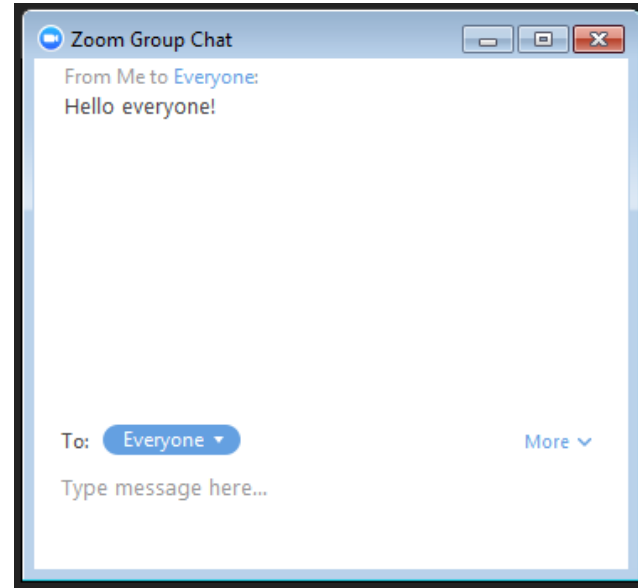
# Our Office is Open!

Brotman Hall

## Student Financial Services:

**Staff available Mon-Fri from 8am-5pm via:**

- ▶ **Phones** (562) 985-5471 Option 3
- ▶ **Windows** – 1<sup>st</sup> floor Brotman Hall courtyard; open 9:00am-5:00pm
  - ❖ Payments
  - ❖ Account Questions
  - ❖ Resolving Financial Holds
- ▶ **Online:** [csulb.edu/financial-management/student-financial-services](https://csulb.edu/financial-management/student-financial-services) for information and Ask Elbee chat bot



## Questions and Answers

---

# Contact CIE-ISS



## Main Office

International Students & Scholars (ISS)  
Foundation Building, Room 185

## Office hours:

Monday – Friday  
9:00 am to 12:00 pm  
12:00- 1:00 pm – closed for lunch  
1:00pm – 4:00 pm

## Website

[csulb.edu/international](http://csulb.edu/international)

## E-mail

[cie-student@csulb.edu](mailto:cie-student@csulb.edu)

## Phone Number

+1 562-985-5555

## Social

[Facebook.com/csulbiss](https://www.facebook.com/csulbiss)  
[Instagram/csulb\\_iss](https://www.instagram.com/csulb_iss)

**Have your CSULB ID number ready  
when you contact any office in the university**

FINALLY, DON'T FORGET

---

*Go*  
**Beach**