



DEPARTMENT OF HEALTH SCIENCE

CSU, LONG BEACH 

-
-
-
-
-
-
-
-

BACKGROUND

The year 2025 marks our 60th Anniversary!!!

The Health Science Department was established in 1965. From its inception, our department was created by visionaries such as Dr. Peter Cortese and Dr. Marian B. Pollock. Dr. Cortese was the first faculty and chair of our department. He held other important positions, including leading The American Association for Higher Education (AAHE), the credentialing movement in the US, and finally placed Health Education on the national map



- ■ ■ ■ ■ ■
- ■ ■ ■ ■ ■

MISSION AND GOALS

Mission

The mission of the Health Science Department and its undergraduate and graduate programs is to aid and encourage students' development into competent professionals and life-long learners who are responsible for community health/public health disciplines, including health education and related areas. The program fosters the development of health professionals who are person-centered and sensitive to the diverse qualities and the changing face of the health care delivery system of our society. Upon graduation, our students are able to facilitate the physical, psychological, and social well being of people individually and collectively in a multi-cultural, multi-ethnic metropolitan context

Goals

Within this mission, the goals of the department include the following:

1. Contribute to the development of a competent student body and faculty
2. Develop strong teaching and research or scholarship programs
3. Maintain linkages with health care professionals, academic personnel, and the community at large.

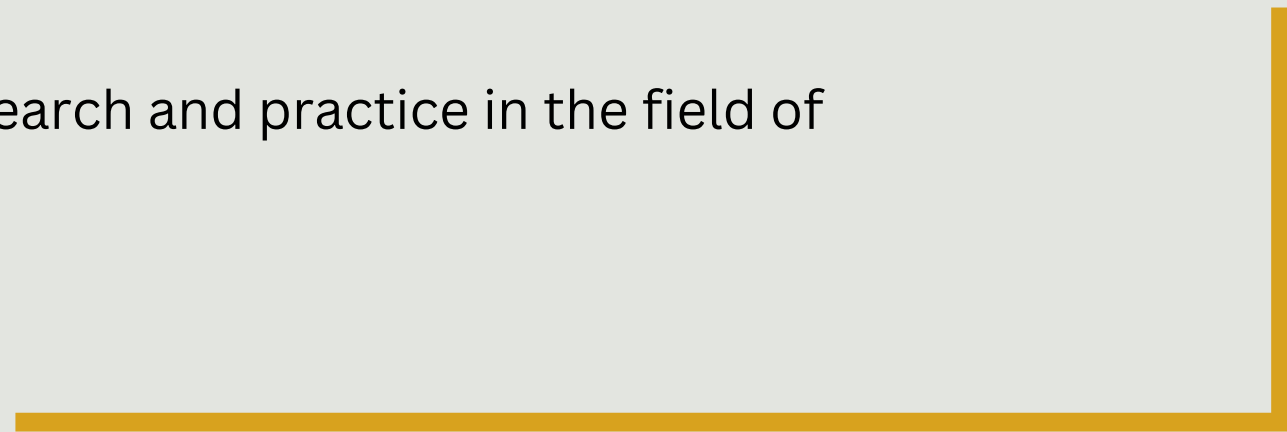
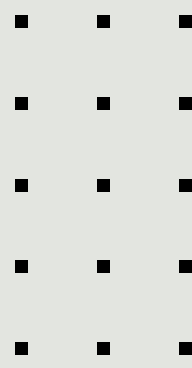
Successful completion of the Health Science undergraduate program will result in students' abilities to:

- Engage in the core functions of public health and health education competencies
- Implement ethical and culturally-relevant practices in public health research and health education
- Demonstrate understanding of key theoretical, research, and practice issues relevant to the fields of public health and health education

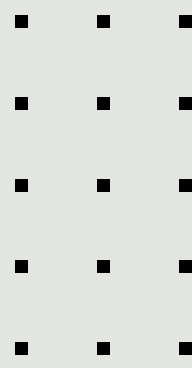
OBJECTIVES

During the program, students will develop foundational, professional skills necessary to succeed in the dynamic environment of the allied health fields and graduate-level academic programs, including:

- Interpret in-depth information from relevant sources representing various points of view/approaches for health information.
- Develop written and oral communication skills in order to serve as an effective health resource person as well as facilitate the development and maintenance of collaborative relationships.
- Demonstrate critical thinking and problem-solving skills to enhance program development, implementation, and evaluation efforts related to priority public health issues.
- Interpret research methods and related qualitative and quantitative data to promote evidence-based practice.
- Demonstrate cultural competence necessary to work within diversity and account for contextual influences that impact health equity.
- Demonstrate management and leadership skills to integrate research and practice in the field of public health.



UNDERGRADUATE PROGRAM OPTIONS



Community Health

- Designed for individuals interested in the links among lifestyle, social and physical environments, and good health.
- The occupational objective of those selecting this option is to serve as a community health educator in public or private health care agencies, voluntary organizations, medical clinics or corporate settings. Health educators use a variety of communication strategies, policy implementations, teaching methods and creative learning experiences to promote voluntary actions, and informed decisions conducive to health.
- Health educators are specifically trained to:
 - Assess health education needs.
 - Provide communication regarding the distribution and determinants of disease and injury.
 - Plan, develop, implement, manage and evaluate health education programs
 - Participate in social planning, advocacy, and coalition building.

School Health

- Designed for individuals who desire to pursue a professional preparation program leading to qualification as a health education teacher in middle, junior, and high schools.
- Graduates may also pursue other administrative careers within a school district such as health education curriculum coordinator, or a substance abuse prevention coordinator.
- Students seeking this option must also be admitted to the College of Education's Single Subject Credential Program.
- Students must successfully complete all required coursework and teaching assignments leading to a California Single Subject Teacher Credential.



Health Advocacy & Policy

- **PROPOSED AS A NEW OPTION**
- An undergraduate degree option in Health Advocacy and Policy prepares students to become advocates for improving the health and well-being of individuals and communities.
- The purpose of this degree is to equip students with the knowledge, skills, and competencies necessary to navigate the complex landscape of public health, healthcare systems, policies, and regulations, and to effectively advocate for positive change.





UNDERGRADUATE PROGRAM ROAD MAPS



 Health Science Undergraduate Option: Community Health FOUR YEAR PLAN Minimum Units Required: 120 				
Freshmen	SEMESTER 1	Total Units: 15-16	SEMESTER 2	Total Units: 16
	GE Area A2 - Written Communications	3	BIOL 205 or (BIOL 207 and 208)	4-8
	GE Area B4/ Statistics	3-4	HSC 210 Contemporary Health Issues	3
	NUTR 132	3	GE Area A1	3
	GE Area C1	3	GE Area A3	3
PSY 100 General Psychology	3	GE Area D1	3	
Sophomore	SEMESTER 3	Total Units: 16	SEMESTER 4	Total Units: 15-16
	GE Area B1	3-4	GE Area C1/C2	3-4
	HSC 201 Introduction to Public Health	3	GE Area C2	3-4
	HSC 250 or BIOL 201	3-4	HSC 421 Health Behavior	3
	GE Area D2	3	General Elective	3
GE Area F	3	General Elective	3	
Junior	SEMESTER 5	Total Units: 15	SEMESTER 6	Total Units: 15
	HSC 403 Community Health Statistics	3	HSC 400 Principles of Epidemiology	3
	HSC Elective	3	HSC 401 Community Health Education	3
	HSC Elective	3	HSC 430 School Health Program	3
	General Elective	3	HSC 405 Health Education Program Evaluation & Measurement	3
General Elective	3	General Elective	3	
Senior	SEMESTER 7	Total Units: 15	SEMESTER 8	Total Units: 15
	HSC 402 Applied Concepts of Community Health Education	3	HSC 440 Applied Concepts of Health Science	3
	HSC 435	3	HSC 485 Internship in Community Health Education	3
	HSC Elective	3	GE Upper-Division D	3
	GE Upper-Division C	3	General Elective	3
General Elective	3	General Elective	2-3	

Please note this document is intended to be a guide. All students are encouraged to seek out advising from CHHS Advising.

11/3/2022



 H SC Undergraduate Option: School Health Education FOUR YEAR PLAN Minimum Units Required: 120 				
Freshmen	SEMESTER 1	Total Units: 15-16	SEMESTER 2	Total Units: 16
	GE Area A2 - Written Communications	3	GE Area A1	3
	GE Area B4 / Statistics	3-4	GE Area A3	3
	PSY 100 General Psychology	3	HSC 210 Contemporary Health Issues	3
	GE Area C1	3	BIOL 205 or (BIOL 207 and 208)	4-8
NUTR 132 Introductory Nutrition	3	GE Area D1	3	
Sophomore	SEMESTER 3	Total Units: 16	SEMESTER 4	Total Units: 15
	HSC 201 Introduction to Public Health	3	HSC 250 or BIOL 201	3-4
	CHEM 100 Chemistry and Today's World	4	GE Area C1/C2	3-4
	HSC 227 Drugs and Health	3	GE Area C2	3-4
	GE Area F	3	HSC 421	3
GE Area D2	3	General Elective	3	
Junior	SEMESTER 5	Total Units: 15	SEMESTER 6	Total Units: 15
	HSC 403	3	HSC 422 Environmental Health	3
	HSC 425 Human Sexuality & Sex Education	3	HSC 423 Consumer Health	3
	HSC 401 Community Health Education	3	COMM 335 or similar approved course	3
	GE Upper Division C	3	General Elective	3
General Elective	3	General Elective	3	
Senior	SEMESTER 7	Total Units: 15	SEMESTER 8	Total Units: 12
	HSC 430 School Health Program	3	HSC 440 Applied Concepts of Health Science	3
	HSC 435 Health Promotion & Risk Reduction	3	General Elective	1-3
	General Elective	3	General Elective	1-3
	General Elective	3	General Elective	1-3
General Elective	3	General Elective	1-3	

Students could take recommended credential courses in place of general electives. Please see Vikki Bisorca, SHE Advisor, for more information.



11/3/2022

UNDERGRADUATE PROGRAM ROAD MAPS



Health Science Undergraduate Option: Community Health			
 TWO YEAR PLAN 		Minimum Units Required: 120	
SEMESTER 1		SEMESTER 2	
Total Units: 15		Total Units: 15	
HSC 201 Introduction to Public Health	3	HSC 400 Principles of Epidemiology	3
HSC 403 Community Health Statistics	3	HSC 401 Community Health Education	3
HSC 421 Health Behavior	3	HSC 430 School Health Program	3
HSC Elective	3	HSC Elective	3
HSC Elective	3	HSC 250 or BIOL 201	3-4
SEMESTER 3		SEMESTER 4	
Total Units: 15		Total Units: 15	
HSC 402 Applied Concepts of Community Health Education	3	HSC 440 Applied Concepts of Health Science	3
HSC 430 School Health Program	3	HSC 485 Internship in Community Health Education	3
HSC 405 Health Education Program Evaluation and Measurement	3	GE Upper-Division D	3
General Elective	3	General Elective	3
GE Upper-Division C	3	General Elective	3

Please note this document is intended to be a guide. All students are encouraged to seek out advising from CHHS Advising.

Health Science Undergraduate Option: School Health Education			
 TWO YEAR PLAN 		Minimum Units Required: 120	
SEMESTER 1		SEMESTER 2	
Total Units: 15		Total Units: 15-16	
HSC 201 Introduction to Public Health	3	HSC 401 Community Health Education	3
HSC 421 Health Behavior	3	HSC 227 Drugs and Health	3
HSC 403	3	HSC 422 Environmental Health	3
GE Upper Division C	3	HSC 423 Consumer Health	3
HSC 425	3	HSC 250 or BIOL 201	3-4
SEMESTER 3		SEMESTER 4	
Total Units: 15		Total Units: 12	
COMM 335 or similar approved course	3	General Elective	3
HSC 430 School Health Program	3	HSC 440 Applied Concepts of Health Science	3
HSC 435 Health Promotion & Risk Reduction	3	General Elective	3
General Elective	3	General Elective	1-3
General Elective	3	General Elective	1-3

Students could take recommended credential courses in place of general electives. Please see Vikki Bisorca, SHE Advisor, for more information.

UNDERGRADUATE PROGRAM TRACKS



California State University, Long Beach | Department of Health Science

HEALTH SCIENCE UNDERGRADUATE TRACKS BY SEMESTER

Take charge of your future! Choose a path that fuels your passion and drives your career forward. **The Community Health Education** track equips you with the skills to empower individuals and communities to make healthier choices through education, advocacy, and policy. Whether in healthcare, nonprofits, or corporate wellness, you'll use communication strategies and teaching methods to inspire change and promote well-being. If you're passionate about preventive care and making a real difference, this is the path for you!

TRACKS	COURSE A FALL	COURSE B SPRING	COURSE C FALL
Advocacy and Policy	HSC 350	HSC 327	HSC 426
Minority Health	HSC 407	Choose one HSC 410 HSC 420	Choose one HSC 413 HSC412
Mental Health	HSC 332	HSC 431	Choose one PSY 370 PSY 378 HDEV 300

Why Choose a Track?

- Stand Out** – Gain specialized knowledge that enhances graduate school & career
- Hands-on Learning** – Apply real-world public health strategies and solutions.
- Expand Your Career Opportunities** – Enter high-demand fields with job-ready expertise.



Learn more & enroll today!

Contact Vikki at :
Vikki.Bisorca@csulb.edu
for advising and next steps.

MORE INFORMATION?

Scan QR code or visit our
CSULB HEALTH SCIENCE WEBSITE



UNDERGRADUATE PROGRAM TRACKS



CALIFORNIA STATE UNIVERSITY, LONG BEACH |
DEPARTMENT OF HEALTH SCIENCE

START YOUR JOURNEY IN COMMUNITY HEALTH SPECIALIZATION TODAY!

Choose Your Path & Elevate Your Impact

Are you ready to make a meaningful difference in public health? Choose a specialized track and gain the expertise, skills, and experience that will set you apart in graduate programs and the workforce. Whether you're passionate about policy change, health equity, or mental well-being, there's a track for you!

Advocacy & Policy Track

Shape the future of public health policy and advocacy! Learn to influence policies, advocate for community well-being, and drive systemic change.

Ideal for careers in

- public policy
- law
- nonprofit leadership
- government agencies

Learn more & enroll today!
Contact Vikki at : Vikki.Bisorca@csulb.edu
for advising and next steps.

MORE INFORMATION?
Scan QR code or visit our
CSULB HEALTH SCIENCE WEBSITE



CALIFORNIA STATE UNIVERSITY, LONG BEACH |
DEPARTMENT OF HEALTH SCIENCE

START YOUR JOURNEY IN COMMUNITY HEALTH SPECIALIZATION TODAY!

Choose Your Path & Elevate Your Impact

Are you ready to make a meaningful difference in public health? Choose a specialized track and gain the expertise, skills, and experience that will set you apart in graduate programs and the workforce. Whether you're passionate about policy change, health equity, or mental well-being, there's a track for you!

Minority Health Track

Champion health equity and address disparities in diverse communities! Gain insight into social determinants of health and strategies for reducing inequities.

Ideal for careers in

- health disparity
- minority health
- global health
- public health research
- nonprofit organizations

Learn more & enroll today!
Contact Vikki at : Vikki.Bisorca@csulb.edu
for advising and next steps.

MORE INFORMATION?
Scan QR code or visit our
CSULB HEALTH SCIENCE WEBSITE



CALIFORNIA STATE UNIVERSITY, LONG BEACH |
DEPARTMENT OF HEALTH SCIENCE

START YOUR JOURNEY IN COMMUNITY HEALTH SPECIALIZATION TODAY!

Choose Your Path & Elevate Your Impact

Are you ready to make a meaningful difference in public health? Choose a specialized track and gain the expertise, skills, and experience that will set you apart in graduate programs and the workforce. Whether you're passionate about policy change, health equity, or mental well-being, there's a track for you!

Mental Health Track

Support mental well-being and drive change in mental health advocacy! Gain insights into prevention strategies and psychological health.

Ideal for careers in

- social work
- mental health advocacy
- healthcare.

Learn more & enroll today!
Contact Vikki at : Vikki.Bisorca@csulb.edu
for advising and next steps.

MORE INFORMATION?
Scan QR code or visit our
CSULB HEALTH SCIENCE WEBSITE



RECOMMENDED COURSES BY SEMESTER:

Fall: HSC 350 – Introduction to Health Advocacy and Policy

- Explore health policies, their impact on health equity, and the role of advocacy in promoting community well-being.

Spring: HSC 327 – Advanced Substance Use Policy and Advocacy

- Examine historical and contemporary substance use policies, including the War on Drugs, mass incarceration, and harm reduction strategies.

Fall: HSC 426 – HIV/AIDS Policy and Advocacy

- Analyze global HIV/AIDS policies, structural health determinants, and public health strategies for prevention, treatment, and care.

RECOMMENDED COURSES BY SEMESTER:

Fall: HSC 407 – Health Disparities & Social Determinants of Health

- Examine social justice and ethical issues affecting diverse and vulnerable populations in the U.S..

Spring: Choose one:

HSC 410 – Asian American Health

- Explore historical and cultural contexts contributing to health disparities in Asian American communities.

HSC 420 – Global Health

- Analyze international health issues, contributing social and cultural factors, and global health agencies.

Fall: Choose one:

HSC 413 – Latino Health

- Understand nutrition and chronic disease prevention among Latino subpopulations.

HSC 412 – African American Health

- Examine biopsychosocial factors shaping health outcomes in African American communities.

RECOMMENDED COURSES BY SEMESTER:

Fall: HSC 332 – Mental Health and Community Well-Being

- Raise awareness about emotional and behavioral health, explore neuroscience and cognitive science, and build resilience in diverse communities.

Spring: HSC 431 – Fostering Mental Health in Schools

- Examine student and teacher mental health challenges, school culture, and strategies for building a supportive environment.

Fall: Choose one:

- PSY 370 – Abnormal Psychology
- PSY 378 – Health Psychology
- HDEV 300 – Death and Dying

UNDERGRADUATE PROGRAM MINOR



Minor in Public Health Requirements Worksheet 2024-2025 Catalog

Name: _____ Student ID: _____

Grade	Course Number & Title (units)	Prerequisites†
-------	-------------------------------	----------------

Complete ALL of the following courses:

	HSC 201: Introduction to Public Health (3) GE Area: E	GE A2 completion
	HSC 400: Principles of Epidemiology (3)	upper division standing; declared HSC minors only
	HSC 421: Health Behavior (3)	declared HSC minors only
_____	Take ONE (1) of the following: <ul style="list-style-type: none"> <input type="checkbox"/> HSC 407: Health Equity & Social Justice in the US (3) GE Area:UD C <input type="checkbox"/> HSC 410: Asian American Health (3) <input type="checkbox"/> HSC 412: Africa American Health (3) <input type="checkbox"/> HSC 413: Latino Health (3) <input type="checkbox"/> HSC 420: Global Health (3) GE Area: UD D <input type="checkbox"/> HSC 425: Human Sexuality & Sex Education (3) GE Area: UD D 	407: GE foundations; upper division standing 410: upper division standing 412: upper division standing 413: upper division standing 420: GE foundations; upper division standing 425: GE foundations; upper division standing
_____	Take ONE (1) of the following: <ul style="list-style-type: none"> <input type="checkbox"/> HSC 210: Personal Health and Wellness (3) GE Area: B2 or E <input type="checkbox"/> HSC 227: Drugs & Health (3) GE Area: E <input type="checkbox"/> HSC 250: Public Health Biology (3) GE Area: B2 <input type="checkbox"/> HSC 327: Advanced Substance Use Policy & Advocacy (3) <input type="checkbox"/> HSC 332: Mental Health & Community Wellbeing (3) <input type="checkbox"/> HSC 350: Introduction to Health Advocacy & Policy (3) <input type="checkbox"/> HSC 401: Community Health Education (3) <input type="checkbox"/> HSC 403: Community Health Statistics (3) GE Area: UD B <input type="checkbox"/> HSC 422: Environmental Health (3) GE Area: UD B <input type="checkbox"/> HSC/CAFF 423: Consumer Health (3) GE Area: UD D <input type="checkbox"/> HSC 426: HIV/AIDS Policy & Advocacy (3) <input type="checkbox"/> HSC 430: School Health Program (3) <input type="checkbox"/> HSC 431: Fostering Mental Health in the School Environment (3) <input type="checkbox"/> HSC 435: Health Promotion & Risk Reduction (3) 	210: GE A2 course 227: GE area A completion 250: GE A2 completion 327: Upper division standing 332: Upper division standing 350: Upper division standing 401: "C" or better in HSC 421 403: a "C" or better in PSY 110 or HDEV 190 or SOC 170 or STAT 108 or STAT 118; GE foundations; upper division standing 422: GE foundations; upper division standing 423: GE foundations; upper division standing 426: Upper division standing 430: a "C" or better in HSC 421 431: Upper division standing 435: a "C" or better in HSC 421; upper division standing

†Prerequisites are subject to change; consult the University Catalog (www.csulb.edu/catalog) for the most recent updates

✓ GE credit is granted based on the term you take the course and is subject to change; see the current GE course list at www.csulb.edu/general-education-requirements

✓ Total units required for PH minor: 15

UNDERGRADUATE PROGRAM PHIT CERTIFICATE

Public Health Informatics & Technology Certificate

This program is designed to prepare the students to work effectively in public health informatics and technology to improve the ability of the community's ability to respond to public health challenges. Students may work for community programs, health services organizations, government agencies, and the private sector in data analysis, systems analysis, informatics, project management and design, research, or administration.

This certificate is state supported.



DISCOVER A NEW PASSION AND MAKE A DIFFERENCE THROUGH CCPHIT!

**Spring
2025**

ONLINE COURSE OFFERINGS!

INTRODUCTION TO PUBLIC HEALTH INFORMATICS AND TECHNOLOGY CALIFORNIA STATE UNIVERSITY LONG BEACH

A Course: HSC 260-01 (9557) (Or any section of HSC 201)
Units: 3
Modality: Synchronous at CSU Long Beach
Date & Time: M/W 5:30pm- 6:45pm
Instructor: Dr. Debbie Huang

PUBLIC HEALTH INFORMATICS: THE ROLE OF DATA CAL STATE EAST BAY CALIFORNIA STATE UNIVERSITY LONG BEACH

B Course: STAT/ PH 306 OR Course: HSC 360-01(9558)
Units: 3 OR Units: 3
Modality: Synchronous at CSU East Bay OR Modality: Synchronous at CSU Long Beach
Date & Time: M/W 6:30 PM - 7:45PM OR Date & Time: TuTh 5:30 PM - 6:45PM
Instructor: Dr. Jack Newsom OR Instructor: Dr. Monica Montano

EMERGING TECHNOLOGIES FOR PUBLIC HEALTH CALIFORNIA STATE UNIVERSITY LONG BEACH Berkeley UNIVERSITY OF CALIFORNIA

C Course: HSC 460A OR Course: CIVENG 190
Units: 3 OR Units: 3
Modality: Synchronous at CSU Long Beach OR Modality: Synchronous at UC Berkeley
Date & Time: F 9:00 AM - 11:45 AM OR Date and Time: Friday 12:00 PM - 2:00 PM
Instructor: Dr. Brian Kwan OR Lab 2:00pm-4:00pm
Instructors: Dr. Raja Sengupta and Gora Datta

PUBLIC HEALTH MAPS AND SPATIAL ANALYSIS FOR HEALTH EQUITY CALIFORNIA STATE UNIVERSITY LONG BEACH Berkeley UNIVERSITY OF CALIFORNIA

D Course: HSC 460B OR Course: PH177A - (17015)
Units: 3 OR Units: 3
Modality: Asynchronous at CSU Long Beach OR Modality: Asynchronous at UC Berkeley
Date & Time: No Meeting Times OR Instructors: Dr. Charlotte Smith
Instructor: Dr. Brian Kwan

PAID INTERNSHIP OPPORTUNITY

Upon completion of above courses (or equivalencies) you will be eligible for a paid internship opportunity. Make sure to fill out the [interest form!](#)

For CSU students:
1. To enroll for **PHIT-A/B/D**, please follow the instructions in the [video](#)
2. To enroll for PHIT-C, please contact Mariana Espiritu: mariana.espiritu-sa@csulb.edu

For more information, contact dharani.chinnam-sa@csulb.edu for additional questions.

CCPHIT PROGRAM IS SUPPORTED BY THE OFFICE OF THE NATIONAL COORDINATOR FOR HEALTH INFORMATION TECHNOLOGY (ONC) OF THE U.S. DEPARTMENT OF HEALTH AND HUMAN SERVICES (HHS) UNDER GRANT NUMBER 50PH40066-01-05 AND TITLE "THE PHIT WORKFORCE DEVELOPMENT PROGRAM" FOR GRANT AMOUNT \$16,232,000.00 AND 0% FINANCED WITH NON-GOVERNMENTAL SOURCES. THIS INFORMATION OR CONTENT AND CONCLUSIONS ARE THOSE OF THE AUTHOR AND SHOULD NOT BE CONSTRUED AS THE OFFICIAL POSITION OR POLICY OF, NOR SHOULD ANY ENDORSEMENTS BE IMPLIED BY ONC, HHS OR THE U.S. GOVERNMENT.

UNDERGRADUATE PROGRAM BEACH EDGE

BEACH EDGE

Students in the [Beach EDGE](#) Health Science Community Health Education program will complete the requirements for both the B.S. and MPH in Community Health.

Beach EDGE students in Health Science may double-count 12 MPH elective units towards both their B.S. and MPH degrees. These 12 units must be completed in residence at CSULB.

- [Health Science, Community Health Education Option, B.S.](#)
- [Public Health, Community Health Education Option, M.P.H.](#)



Double-Counting of Courses

Beach EDGE students in Health Science may double-count 12 MPH elective units towards both their B.S. and MPH degrees.

Students can choose two of the following graduate-level electives and two of the following graduate-level concentration courses to double-count for B.S. and MPH:

Electives (2 courses from the following graduate-level elective courses)

- [H SC 520 - Global Health Policy and Human Rights: An Interdisciplinary Approach](#)
- [H SC 534 - Advanced Latino Nutrition, Health and Chronic Disease Prevention](#)
- [H SC 535 - Health Promotion and Risk Reduction](#)
- [H SC 537 - Culturally Responsive Nutrition Promotion for Latinos](#)

Concentration (2 courses from the following graduate-level concentration courses)

Community Health Concentration

- [H SC 507 - Health Equity and Health Disparities Research in the US](#)
- [H SC 581 - Curriculum Development in Health Education](#)
- [H SC 625 - Advanced Community Health Education](#)

Global Health Concentration

- [H SC 520 - Global Health Policy and Human Rights: An Interdisciplinary Approach](#)
- [GERN 574 - Global Aging](#)

Latino Health Concentration

- [H SC 534 - Advanced Latino Nutrition, Health and Chronic Disease Prevention](#)
- [H SC 535 - Health Promotion and Risk Reduction](#)
- [H SC 537 - Culturally Responsive Nutrition Promotion for Latinos](#)

Eligibility, Application, Deadlines, and Additional Information are detailed on [the Beach EDGE in the Health Science-Community Education website.](#)

UNDERGRADUATE PROGRAM COURSES

CORE

- H SC 201 - Introduction to Public Health
- H SC 210 - Personal Health and Wellness
- H SC 301 - Orientation to Health Science
- H SC 400 - Principles of Epidemiology
- H SC 401 - Community Health Education
- H SC 402 - Applied Concepts of Community Health Education
- H SC 403 - Community Health Statistics
- H SC 405 - Health Education Program Evaluation and Measurement
- H SC 421 - Health Behavior
- H SC 430 - School Health Program
- H SC 435 - Health Promotion and Risk Reduction
- H SC 440 - Applied Concepts of Health Science
- H SC 485 - Internship in Community Health Education

ELECTIVES

- H SC 150 - Medical Terminology
- H SC 227 - Drugs and Health
- H SC 250 - Public Health Biology
- H SC 260 - Introduction to Public Health Informatics and Technology
- H SC 297 - Selected Topics in Health Science
- H SC 327 - Advanced Substance Use Policy and Advocacy
- H SC 332 - Mental Health and Community Wellbeing
- H SC 350 - Introduction to Health Advocacy and Policy
- H SC 360 - Public Health Informatics: The Role of Data
- H SC 401 - Community Health Education
- H SC 407 - Health Equity & Social Justice in the US
- H SC 410 - Asian American Health
- H SC 411A - Health Science for Elementary Teachers
- H SC 411B - Health Science for Secondary Teachers
- H SC 412 - African American Health
- H SC 413 - Latino Health
- H SC 420 - Global Health
- H SC 422 - Environmental Health
- H SC 423 - Consumer Health
- H SC 425 - Human Sexuality and Sex Education
- H SC 426 - HIV/AIDS Policy and Advocacy
- H SC 431 - Fostering Mental Health in the School Environment
- H SC 460A - Emerging Technologies for the Public Health
- H SC 460B - Public Health Maps and Spatial Analysis for Health Equity
- H SC 490 - Independent Studies in Health Science
- H SC 497 - Selected Topics in Health Science



HONORS COURSE

Health Science 420: Global Health

D Upper Division, F Capstone, HD Human Diversity (3 units)

Analysis of current health problems in the world; examination of contributing social, psychological, physical, legal and cultural factors; international programs for the improvement of world health; structure and functions of world health agencies and organizations.

UNDERGRADUATE PROGRAM COURSE MODALITIES

FACE TO FACE

A course offering that depends on face-to-face contact such as lecture, discussion, demonstration, and direct exchange of materials as the primary method of communication. Face to Face courses usually have a fixed day and time and are scheduled in a classroom, laboratory, or studio. However, courses with a TBA meeting pattern, such as Supervision, can also have an instruction mode of Face to Face. The majority of classes are scheduled in a Face to Face format.

HYBRID

A course offering that depends on both academic technology and face-to-face contact as significant components of communication between student and instructor and among students. One-third to two-thirds of the student/faculty and student/student contact time is online. The remaining communication is face-to-face, similar to a traditional class.

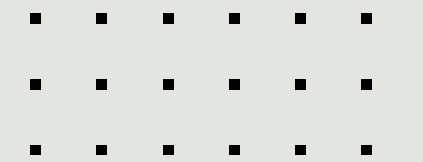
ONLINE ONLY

A course offering in which the majority of the instruction occurs when the student and instructor are not in the same place. An online course uses Academic Technology to mediate most teaching and learning, but it may require up to two hours of face-to-face meetings per unit on campus within the given semester. These face-to-face class meetings may be used for activities such as orientation, special in-class presentations, or exams.



ADVISING

- **COLLEGE OF HEALTH AND HUMAN SERVICES**
 - Assistant Director, Health Science Advisor, Lisa Fish
- **DEPARTMENT OF HEALTH SCIENCE**
 - Undergraduate Coordinator, Vikki Bisorca
 - Undergraduate Internship Coordinator, Natalie Whitehouse-Capuno
 - Graduate Program Director, Toni Espinoza-Ferrel
 - Public Health Informatics & Technology Certificate, Dr. Brian Kwan

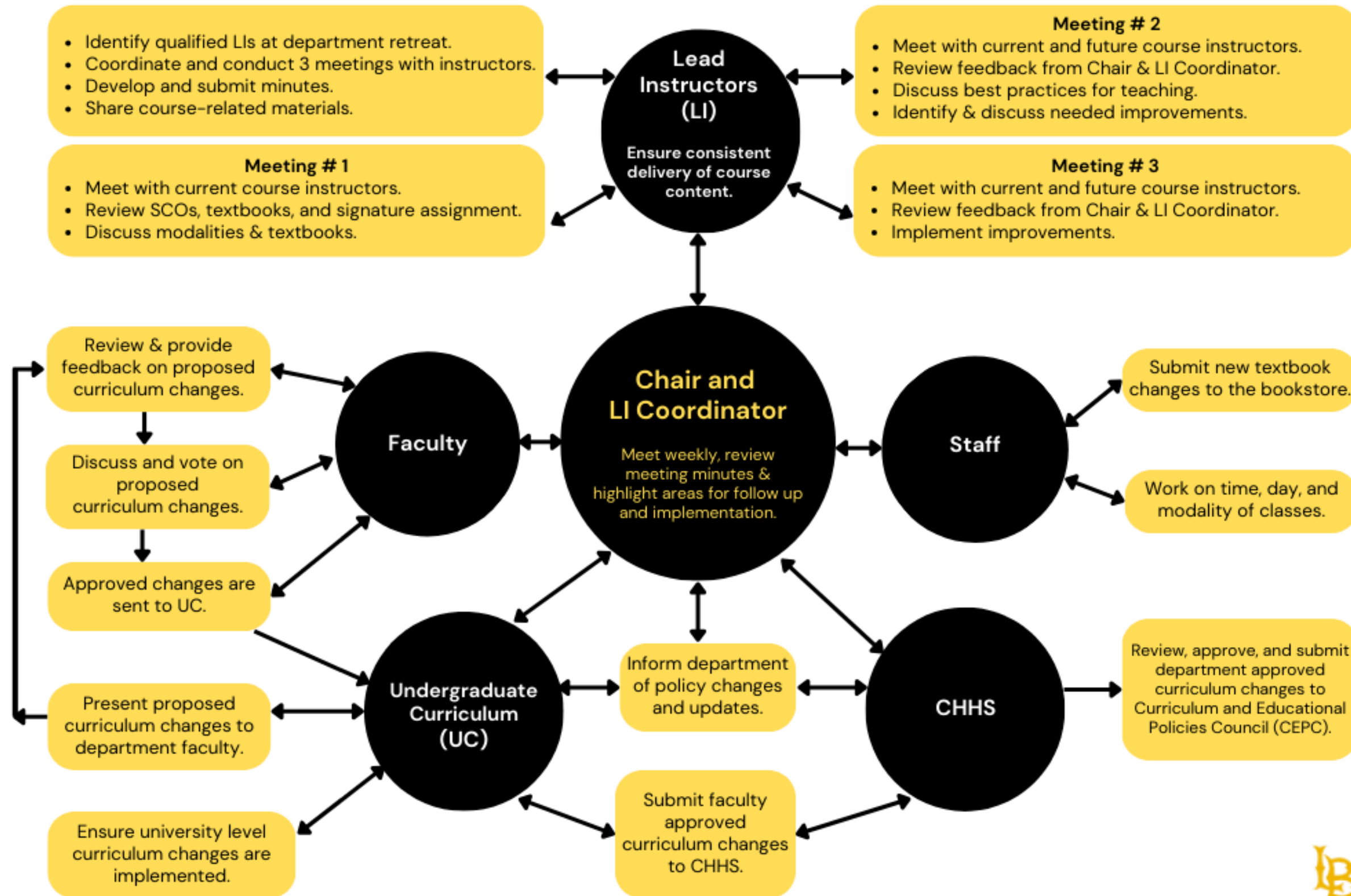


Welcome to College of Health and Human Services Advising!

The College of Health & Human Services (CHHS) Academic Advising Center provides both general education and major academic advising to currently matriculated CSULB undergraduate students in all of the CHHS disciplines: Criminology & Criminal Justice, Child Development & Family Studies, Consumer Affairs, Family Life Education, Fashion, Hospitality Management, Health Care Administration, Health Science, Kinesiology, Nursing, Recreation & Leisure Studies, Social Work, and Speech-Language Pathology.



Department of Health Science Lead Instructor System



TENURED/TENURE TRACK FACULTY



Kamiar Alaei
MD, DrPH, MPH

Chair and Professor



Niloofar Bavarian
PhD, MPH

Associate Chair and Associate Professor



Veronica Acosta-Deprez, PhD

Professor



Brian Cole
PhD

Assistant Professor



Melawhy Garcia
PhD, MPH

Associate Professor



Fiona Gorman
EdD, MPH

Associate Professor



Debbie Huang
PhD

Assistant Professor



Lucy Huckaby
MSN, PhD

Professor



Amber Johnson
PhD, MPH

Associate Professor



Judy Jou
PhD

Associate Professor



Javier Lopez-Zetina
PhD

Associate Professor



Brian Kwan
PhD

Assistant Professor



Selena Nguyen-Rodriguez, PhD, MPH

Professor



Erika Rosen
PhD

Assistant Professor



Heidi West
PhD

Assistant Professor

FULL TIME LECTURER FACULTY



Vikki Bisorca
MPH

Full-Time Lecturer and
Undergraduate
Coordinator



Toni Espinoza-Ferrel
MPH

Full-Time Lecturer and
Graduate Program
Coordinator



Lyzette Blanco
PhD, MPH

Full-Time Lecturer



Claire Garrido-Ortega
MPH, CHES

Full-Time Lecturer



Lisa Sparks
MPH, EdD

Full-Time Lecturer



Kelley Tenny
MPH

Full-Time Lecturer



**Natalie Whitehouse-
Capuano, MPH, CHES**

Full-Time Lecturer

PART TIME LECTURER FACULTY



Natalia Gatdula, MPH

PART TIME LECTURER



Mayra Rascon, MPH

PART TIME LECTURER



George Smith, EdD

PART TIME LECTURER



Jamie McDonald,
MPH, CHES

PART TIME LECTURER



Monica Montano, MPH

PART TIME LECTURER



Theodora Papachristou,
EdD

PART TIME LECTURER



Nicole Betschman, MPH

PART TIME LECTURER



Banafshe Sharifian-Attar,
MPH

PART TIME LECTURER



Michelle Zakson, MPH

PART TIME LECTURER



Wendy Ramirez, MPH

PART TIME LECTURER



Phillip Falcetti, MPH

PART TIME LECTURER



Eleanor Baltazar, MPH

PART TIME LECTURER



Sara Gershwin-Razo, MS

PART TIME LECTURER



Godwin Orkeh

PART TIME LECTURER



Arash Alaei, MD

PART TIME LECTURER



Foojan Zeine, PhD

PART TIME LECTURER



Mohammed Azad, DrPH

PART TIME LECTURER



Maryam Pishgar

PART TIME LECTURER



Jessica Liu, PhD

PART TIME LECTURER



Elizabeth

PART TIME LECTURER



Erin Holloway, MPH

PART TIME LECTURER



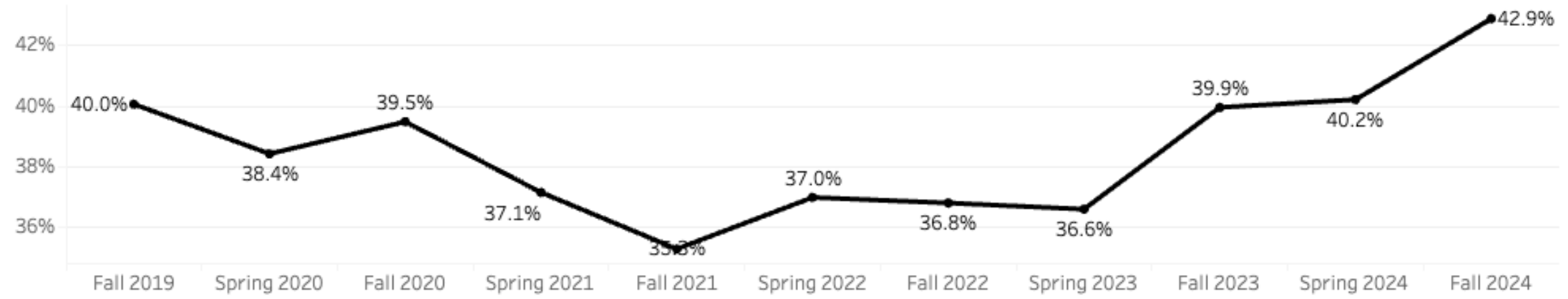
Erin Gerardo-Kliem, MPH

PART TIME LECTURER

DEPARTMENT OF HEALTH SCIENCE



FTEF Based Tenure Density Trend



Tenure Density Trends by Race/Ethnicity

Select Demographic Characteristic
Race/Ethnicity

	Fall 2019	Spring 20..	Fall 2020	Spring 20..	Fall 2021	Spring 20..	Fall 2022	Spring 20..	Fall 2023	Spring 20..	Fall 2024
Asian	71.4%	66.3%	63.6%	67.3%	64.1%	64.1%	55.6%	53.2%	61.4%	57.4%	69.2%
Black/African American	83.3%	83.3%	83.3%	55.6%	71.4%	55.6%	62.5%	55.6%	50.0%	50.0%	50.0%
Hispanic/Latino	35.7%	33.3%	39.5%	37.2%	34.9%	36.6%	37.5%	37.5%	36.6%	38.5%	35.7%
Not Specified	83.3%	100.0%	100.0%	100.0%	100.0%	100.0%	100.0%	100.0%	100.0%	100.0%	100.0%
Two or More Ethnicities/Race	0.0%	0.0%	0.0%	0.0%	0.0%	0.0%	0.0%	0.0%	0.0%	0.0%	0.0%
White	23.6%	22.8%	17.6%	16.3%	15.5%	17.4%	19.5%	17.9%	24.2%	24.6%	25.9%
Overall Tenure Density	40.0%	38.4%	39.5%	37.1%	35.3%	37.0%	36.8%	36.6%	39.9%	40.2%	42.9%

SOURCE: CSULB INSTITUTIONAL RESEARCH & ANALYTICS

Full-Time Equivalent Faculty and Tenure Density by Tenure Type



Fall 2019				Spring 2020				Fall 2020			
T/TT	LF	Total FTEF	*Tenure Density	T/TT	LF	Total FTEF	*Tenure Density	T/TT	LF	Total FTEF	*Tenure Density
11.1	16.6	27.7	40%	11.1	17.8	28.9	38.4%	11.0	16.9	27.9	39.5%
Spring 2021				Fall 2021				Spring 2022			
T/TT	LF	Total FTEF	*Tenure Density	T/TT	LF	Total FTEF	*Tenure Density	T/TT	LF	Total FTEF	*Tenure Density
11.0	18.6	29.6	37.1%	10.5	19.3	29.8	35.3%	10.5	17.9	28.4	37%
Fall 2022				Spring 2023				Fall 2023			
T/TT	LF	Total FTEF	*Tenure Density	T/TT	LF	Total FTEF	*Tenure Density	T/TT	LF	Total FTEF	*Tenure Density
11.0	18.9	29.9	36.8%	10.5	18.2	28.7	36.6%	12.5	18.8	31.3	39.9%
Spring 2024				Fall 2024				Spring 2025			
T/TT	LF	Total FTEF	*Tenure Density	T/TT	LF	Total FTEF	*Tenure Density	T/TT	LF	Total FTEF	*Tenure Density
12.5	18.6	31.1	40.2%	13.5	18.0	31.5	42.9%				

COMMITTEES

- Undergraduate Program - Curriculum + GE
- Undergraduate Assessment
- Graduate Program - MPH Program Curriculum
- Graduate Program - MPH (Admissions/Program Related Issues)
- MPH Accreditation/MPH PIP
- MPH CAB
- Grade Appeals
- Scholarship/Awards
- RTP (vote needed)
- Peer Review Committee/SMEs (vote needed)
- Lecturer Review Committee (vote needed)
- Range Elevation (vote needed)
- Workforce Development
- DrPH
- Search Committee - 2 positions
- SPPH

FACULTY ACHIEVEMENTS

- **Early Academic Career Excellence Award**
 - Dr. Melawhy Garcia
 - Dr. Amber Johnson
 - Dr. Selena Nguyen-Rodriguez
- **Faculty Faculty Advising and Mentoring Award**
 - Toni Espinoza-Ferrel
- **Distinguished Faculty Scholarly and Creative Achievement Award**
 - Dr. Selena Nguyen-Rodriguez
- **Faculty Community Service Award**
 - Dr. Melawhy Garcia
- **Faculty Mentor for RSCA Award**
 - Dr. Niloo Bavarian-Ellis
- **Wang Family Excellence Award**
 - Dr. Lucy Huckabay



GRANTS/RESEARCH

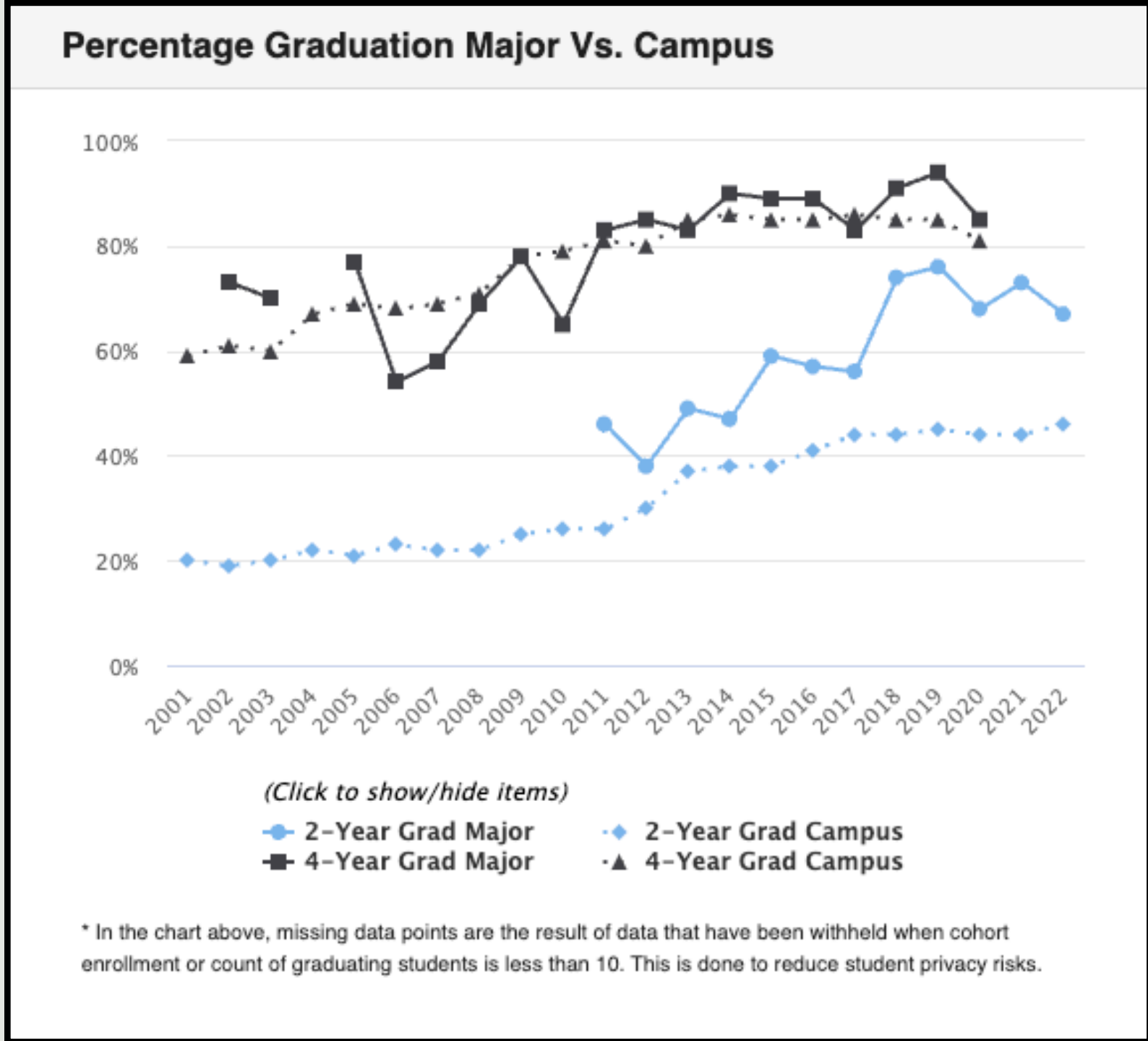
- PI: Johnson. **Unite LA k-16 Collaborative grant.** This grant aims to create stronger pathways from LBUSD and LBCC to CHHS and the workplace.
- PI: Bavarian (2023-2025). NIH/NIDA R34 – 3-Year study – **Refining and implementing a screening and brief intervention for college health providers to address prescription stimulant misuse and diversion.** \$672,656. Currently has only included graduate research assistants
- PI: Bavarian (2018-2022). NIH/NIDA R15 – 3-Year study + no-cost extension – **Exploring deterrents of prescription stimulant misuse and diversion.** \$4437,140. Includes undergraduate student research assistants (~5)
- PI: Garcia. Project Name: **Eat, Play, Go! Transdisciplinary Obesity Prevention for Latino Families**, Funding Agency: United States Department of Agriculture - NIFA Award #2021-69015-33433.
- PI: Garcia. Project Name: **ÁNDALE Latino Research Training Program**, Funding Agency: United States Department of Agriculture, NIFA Award #2020-67037-30663
- PI: Garcia. Project Name: **Leveraging Interdisciplinary Nutritional Knowledge** Funding Agency: United States Department of Agriculture-NIFA (August 2021-2025) Award # 2021-77040-34904
- PI: Garcia. **Harvesting Healthy Habits in Long Beach**, Funding Agency: United States Department of Agriculture-NIFA (January 2023-2026) Award #2023-69015-39407
- PI: Alaei. \$10 million grant, funded by the US DHHS ONC, will enable CSULB to build a consortium that will help **strengthen U.S. public health information technology** efforts, improve COVID-19 data collection and increase representation of underrepresented communities within the public health IT workforce.



GRADUATION TRENDS

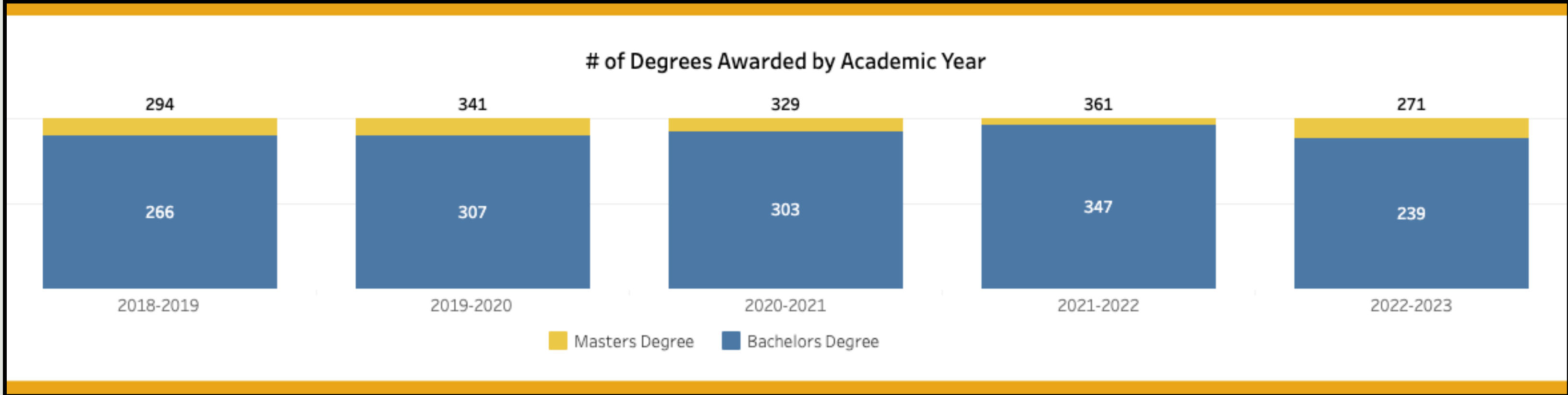


CHHS, HEALTH SCIENCE TRANSFER STUDENTS



SOURCE: CSU STUDENT SUCCESS DASHBOARD

OF DEGREES AWARDED BY AY

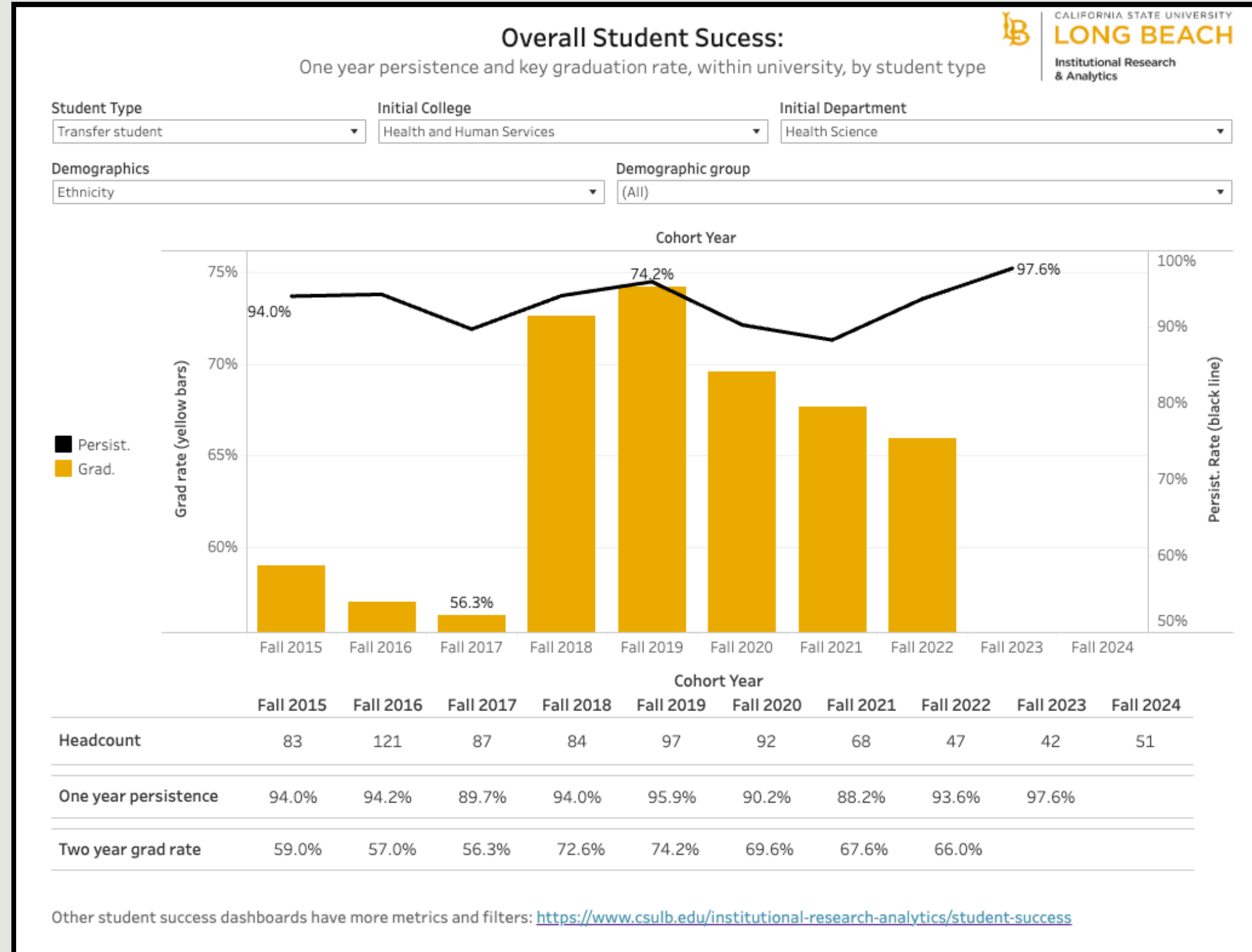


SOURCE: CSULB INSTITUTIONAL RESEARCH & ANALYTICS

DEPARTMENT OF HEALTH SCIENCE



OVERALL STUDENT SUCCESS RETENTION RATES

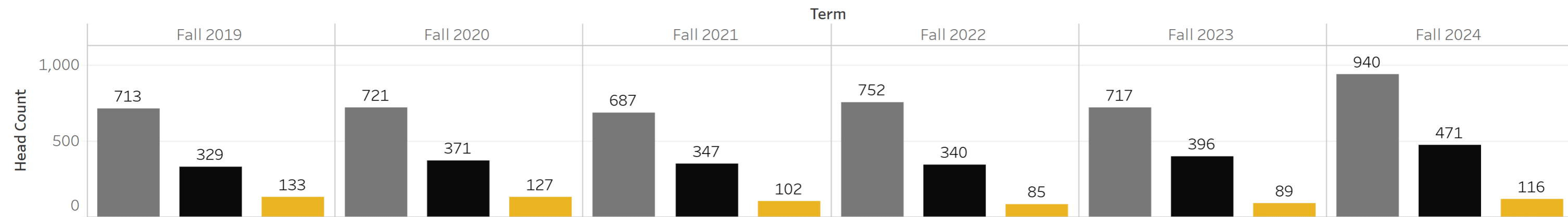


SOURCE: CSULB INSTITUTIONAL RESEARCH & ANALYTICS

ADMISSION/ENROLMENT TRENDS

Undergraduate Student Applied, Admitted, and Enrolled Trends over Time

Select Term: (Multiple values) | Student type: (All) | Select Demographic: Biological Sex | Select Level of Demographic: (All) | Student College: Health and Human Services | Student Department: Health Science | [Reset Selections](#)



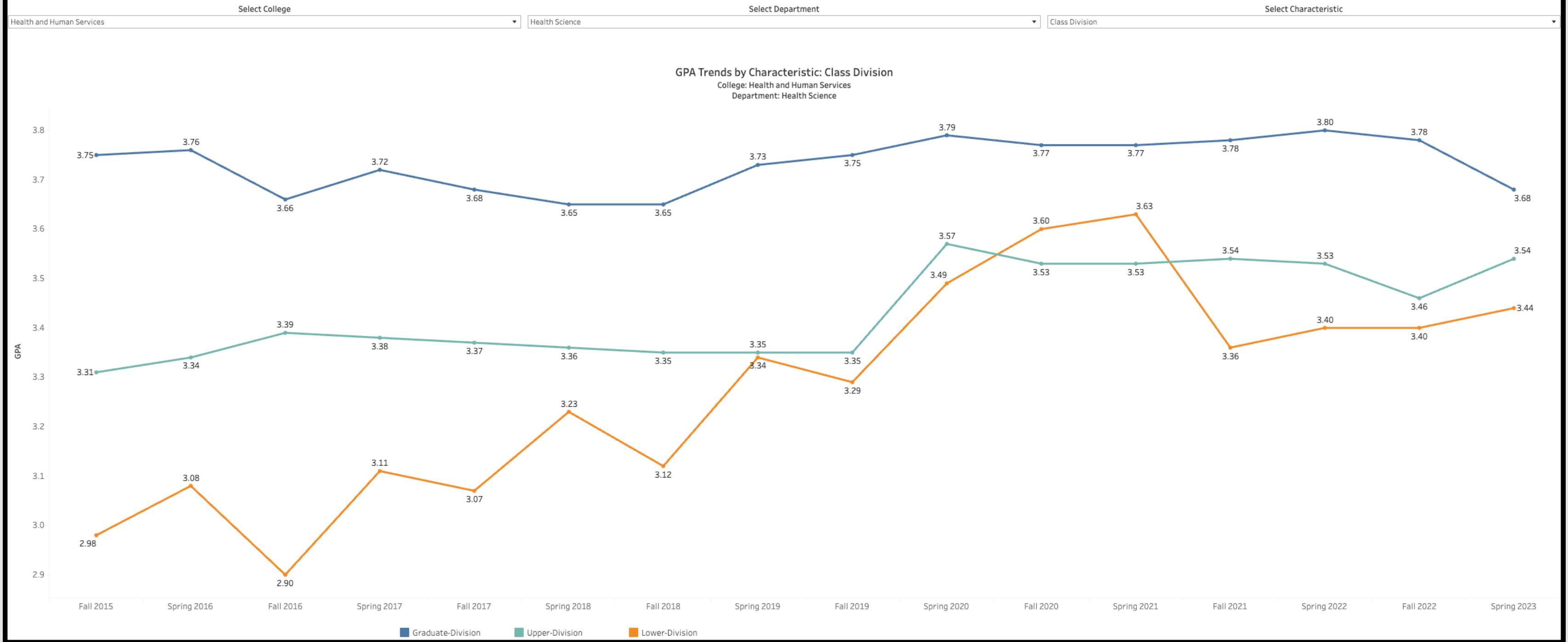
	Total Applied	Total Admitted	Total Enrolled	% Admit Rate	% Applicant Yield	% Admit Yield
Fall 2019	713	329	133	46.14%	18.65%	40.43%
Fall 2020	721	371	127	51.46%	17.61%	34.23%
Fall 2021	687	347	102	50.51%	14.85%	29.39%
Fall 2022	752	340	85	45.21%	11.30%	25.00%
Fall 2023	717	396	89	55.23%	12.41%	22.47%
Fall 2024	940	471	116	50.11%	12.34%	24.63%

Please note. Admit Rate = Total Admitted/Total Applied; Applicant Yield = Total Enrolled/Total Applied; Admit Yield = Total Enrolled/Total Admitted. Additionally, data presented here only includes new First-Time Freshmen (FTF) and Transfer students, and DOES NOT include New Postbacs and Graduates, or Returning, Continuing, and Transitory students.

GPA TRENDS AT GLANCE

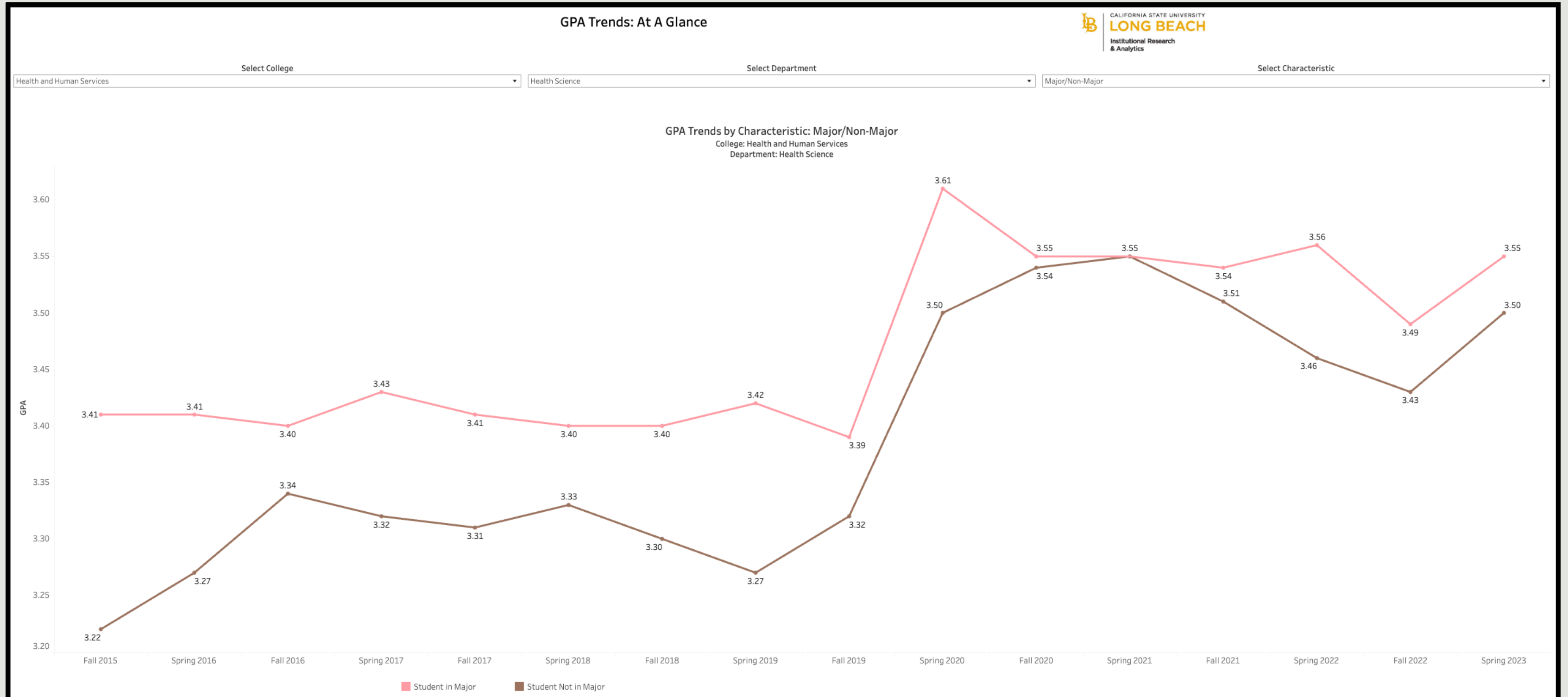


GPA Trends: At A Glance



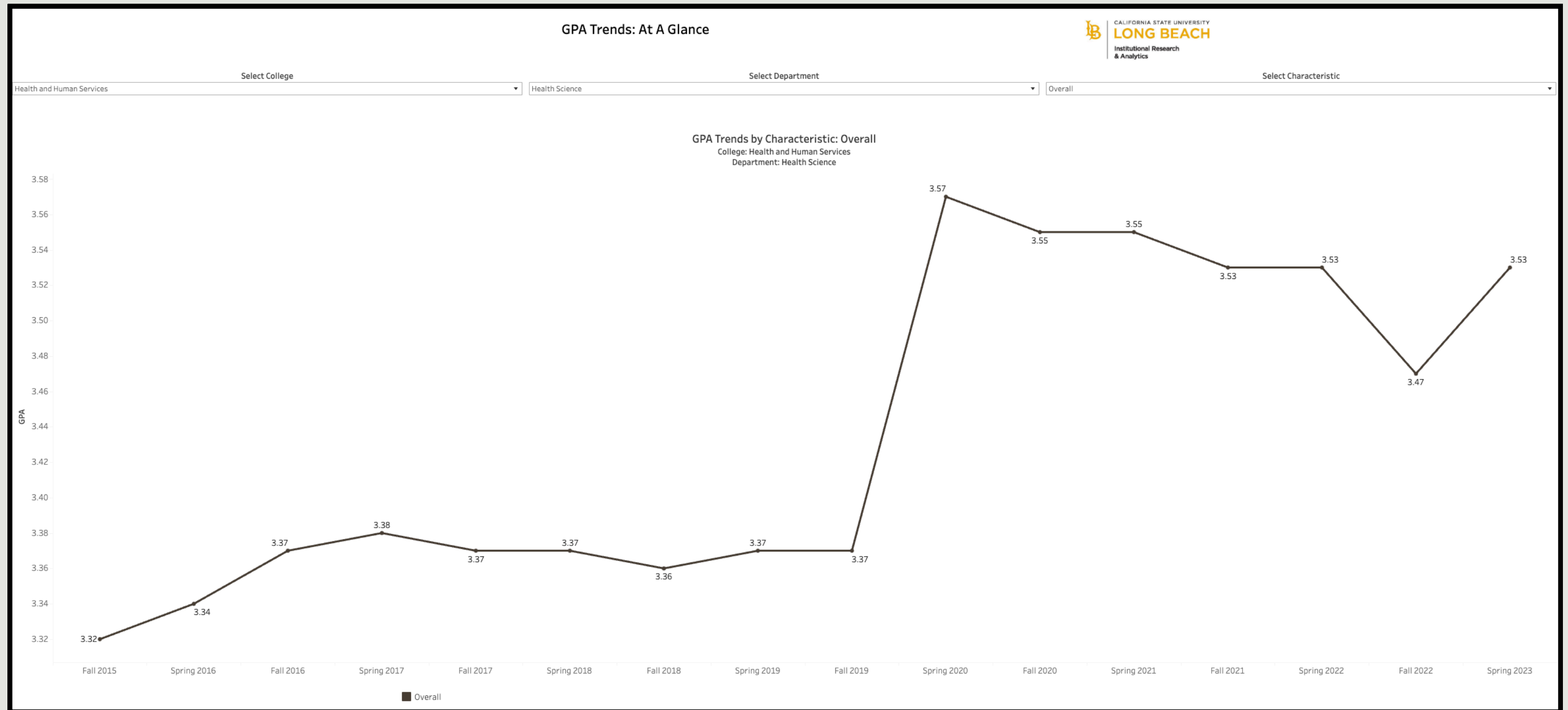
SOURCE: CSULB INSTITUTIONAL RESEARCH & ANALYTICS

GPA TRENDS AT GLANCE



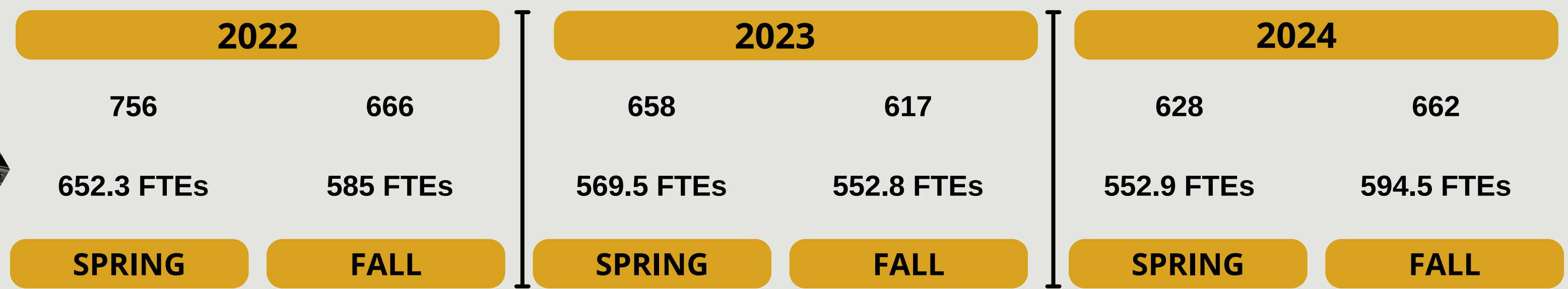
SOURCE: CSULB INSTITUTIONAL RESEARCH & ANALYTICS

GPA TRENDS AT GLANCE



SOURCE: CSULB INSTITUTIONAL RESEARCH & ANALYTICS

OVERALL ENROLLMENT UNDERGRADUATE PROGRAM



SOURCE: CSULB INSTITUTIONAL RESEARCH & ANALYTICS





UNDERGRADUATE STUDENT ENGAGEMENT



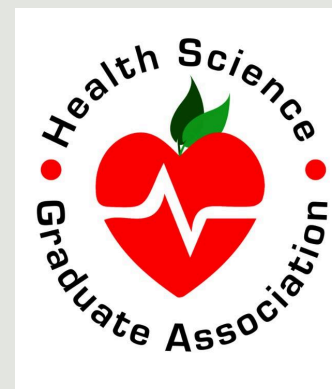
HEALTH SCIENCE STUDENT ASSOCIATION

Enables students to work closely with faculty in planning various activities geared towards disease and health prevention such as health fairs. The HSSA creates an environment for students to interact with other students, make long-lasting friendships and utilize their skills to work on projects in and out of school.



HEALTH SCIENCE GRADUATE STUDENT ASSOCIATION

The Health Science Graduate Association (HSGA) is an organization dedicated to providing Master of Public Health (MPH) students the opportunity to network with peers, faculty members, community members, and health professionals. As a member, students will actively be able to network and attend workshops, fundraisers, and social events.



ETA SIGMA GAMMA

Eta Sigma Gamma (ESG) is a national honor society designed for both Health Science major and minor students in Health Education. ESG was first organized in 1967, with the National Office located in Muncie, Indiana, and is associated with Ball State University. With over 80 chapters nationwide, CSULB is the fifth ESG chapter and was established in 1970 as the Gamma chapter.



STUDENT ENGAGEMENT



CSU Health Policy Conference in Sacramento



Project Milestones



53 undergraduate students participated across four cohorts



\$79,378.42 in scholarship funding awarded this fiscal year



8 scholars submitted an abstract and/or presented at a conference



10 scholars attended a professional conference

2023 - 2024 ÁNDALE Scholars



Alexis Pope
Nutrition & Dietetics



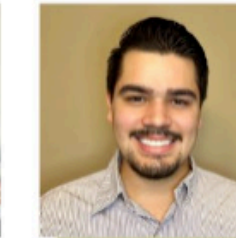
Andrea Rodriguez
Health Science



Cindy Meyer
Health Science



Giovanni Honore
Kinesiology



Jeremy Burrola-Woodard
Health Science



Marco Reyes
Health Science



Marlene Rodriguez
Nutrition & Dietetics



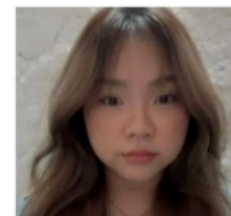
Sebastian Dang
Kinesiology



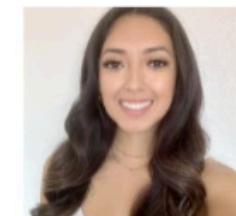
Stephanie Orjuela
Kinesiology



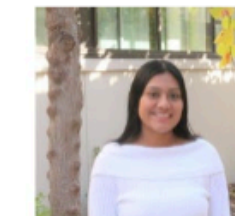
Valerie Mendoza
Healthcare Administration



Quynh Sa
Health Science



Yadira Buenrostro
Health Science



Yeraldine Polo
Nutrition & Dietetics

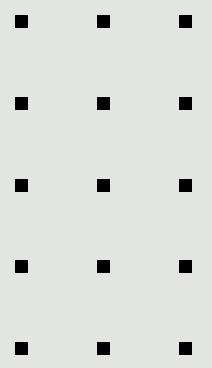


Yanel Galindo
Psychology

STUDENT MIXERS



Health Science Student Mixer



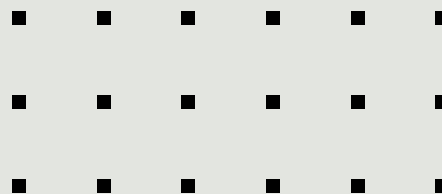
COMMUNITY PARTNERS

1. AbilityFirst Joan & Harry A. Mier Center
2. AbilityFirst Long Beach Center
3. Alzheimer's Family Center
4. American Academy of Pediatrics-Orange County
5. American Heart Association
6. American Red Cross, Southern California Region
7. Antelope Valley Partners for Health
8. APLA Health
9. Arthritis Foundation, Pacific Region
10. Asian American Drug Abuse Program
11. Asians for Miracle Marrow Matches
12. Beach Cities Health District
13. Big Brothers Big Sisters of Orange County & The Inland Empire
14. Blind Start of America
15. Bloom Behavioral Health
16. Boys & Girls Club of Buena Park
17. Boys & Girls Club of Whittier | Pico Rivera
18. Boys & Girls Clubs of Garden Grove
19. Boys & Girls Clubs of Greater Anaheim-Cypress
20. Boys & Girls Clubs of Long Beach
21. Boys & Girls Clubs of Metro Los Angeles
22. Braille Institute
23. California Association of Health and Education Linked Professions JPA
24. Casa De La Familia
25. Children's Hospital Orange County
26. City of Long Beach, DHHS, Bureau of Environmental Health
27. City of Long Beach, DHHS, Early Childhood Program
28. City of Long Beach, DHHS, Healthy Active Long Beach
29. City of Long Beach, DHHS, HIV Surveillance
30. City of Long Beach, DHHS, Physician Services Bureau

1. City of Long Beach, HHSD
2. Community Action Partnership of Orange County
3. Community Health Initiative of Orange County
4. Compassionate Cancer Care Med Group
5. Compassionate Care hospice
6. CSULB, ATOD Program
7. CSULB, Center for Health Equity at Charles Drew
8. CSULB, Center for Latino Community Health
9. CSULB, Center for Successful Aging
10. CSULB, Health Resource Center
11. CSULB, Student Health Services
12. Cystic Fibrosis Foundation, Orange County Chapter
13. Dignity Health
14. Dr. Riba's Health Club, Inc.
15. Epilepsy Support Network of Orange County
16. Families in Good Health
17. Filipino Migrant Center
18. Fountain Valley Regional Hospital
19. Garden School Foundation
20. Gente Organizada
21. Good Neighbor Clinic, Inc.
22. Grandma's House of Hope
23. Harbor-UCLA Medical Center
24. Health Career Connection
25. Hunger Action Los Angeles
26. Intecore Physical Therapy
27. JWCH Institute, Inc.
28. Kaiser Foundation Hospitals (So. Cal)
29. Lakewood Regional Medical Center
30. Latino Health Access

1. Lettuce Gather, LLC
2. Leukemia & Lymphoma Society
3. Long Beach Community College District
4. Long Beach Forward
5. Long Beach Gray Panthers
6. Long Beach Parks, Recreation and Marine
7. Los Alamitos Medical Center, Inc.
8. Los Angeles County Dept of Health Services
9. Los Angeles County Fire Department
10. Los Angeles LGBT Center
11. Married to Health
12. MemorialCare Memorial Health Services
13. Mental Health Association of Orange County
14. MiOra
15. Molina Health Care, Inc.
16. Multi-Ethnic Collaborative of Community Agencies (MECCA)
17. Muscular Dystrophy Association
18. NAMI Orange County
19. National Asian Pacific American Families
20. Nhan Hoa Comprehensive Health Care Clinic
21. Norooz Clinic Foundation
22. Nutrition As Therapy, Inc.
23. Orange County Asian Pacific Islander Community Alliance (OCAPICA)
24. Orange County Health Care Agency, TUPP
25. Orange County Superintendent of Schools
26. Partners4Wellness
27. Pediatric Therapy Network
28. Phoenix House California
29. PIH Health
30. Planned Parenthood of Orange and San Bernardino Counties

1. Project Access
2. Project MotiVATe, Inc.
3. Providence Health System
4. Pulmonary and Sleep Consultants
5. Rising Tide @ MKEC
6. Riverside County Department of Public Health
7. San Bernardino County Department of Behavioral Health
8. San Bernardino County Department of Public Health
9. St. Joseph Hospital of Orange
10. St. Jude Medical Center
11. St. Jude Medical Center - Senior Service
12. Standup for Kids Orange County
13. The Children's Clinic Family Health
14. The Happiness Project
15. The Leukemia & Lymphoma Society
16. The LGBTQ Center Long Beach
17. The LGBTQ Center Orange County
18. The Raise Foundation
19. The Truong Neuroscience Institute
20. Tichenor Clinic for Children
21. United Cambodian Community
22. WellPath Partners
23. YMCA of Greater Long Beach
24. YMCA of Greater Long Beach - Fairfield



COMMUNITY ENGAGEMENT



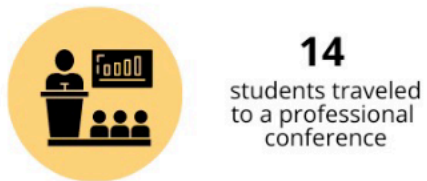
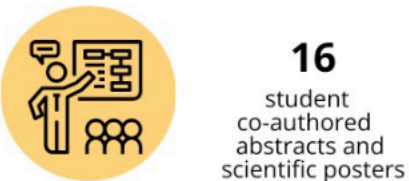
LONG BEACH STATE UNIVERSITY
**CENTER FOR LATINO
 COMMUNITY HEALTH**
 EVALUATION & LEADERSHIP TRAINING

AT A GLANCE

Community Members
Engaged in Programming

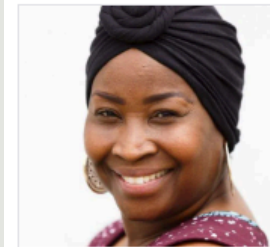


Students
Trained and Mentored



CSULB and City of Long Beach Partnership to Promote Black Health Equity

Current Black Health Equity Team



Gwendolyn Manning

DEPUTY EQUITY OFFICER
EOC COVID-19 RESPONSE
BLACK INFANT HEALTH PROGRAM
COORDINATOR
CITY OF LONG BEACH

Gwendolyn has served for 22 years as a preventive health leader at the City of Long Beach Department of Health and Human Services. Gwendolyn currently oversees implementation of the Black Infant Health (BIH) Program, a Sister Circle group intervention aimed at improving the birth outcomes of Black infants and mothers. Gwendolyn led the development and implementation of the Black Health Equity Fund, a million-dollar CARES Act allocation, to provide COVID-19 support services to Long Beach Black residents via grant funding for local Black-serving nonprofits and microbusinesses.



Amber Johnson, PhD

ASSOCIATE PROFESSOR
CSULB

Dr. Amber Johnson is an Associate Professor in the Department of Health Science at California State University at Long Beach. She earned both her PhD and MPH in Community Health Education received her BA in Psychology. Her love for epidemiology also motivated her to pursue a Post-Bac Certificate in Epidemiology. Dr. Johnson's research focuses on social epidemiology and is guided by the weathering hypothesis, which posits that stress associated with racial inequities may cause health deterioration among African Americans as early as young adulthood, leading to racial disparities in health outcomes over the life span. Dr. Johnson also has experience working with community-based participatory research projects, HIV prevention, cardiovascular prevention education at Historically Black Colleges and Universities, and community health assessment and outreach.



Chelsea Okundolor

OUTREACH & SOCIAL MEDIA
COORDINATOR
CSULB

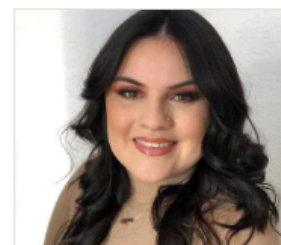
Chelsea Okundolor received her undergraduate degree from California State University, Long Beach in Health Science with an emphasis in community health education. She is currently an Outreach & Social Media Coordinator for the Black Health Equity Collaborative and a pre-medical postbaccalaureate student at the University of California, Los Angeles. Her career goals include becoming a women's health provider and conducting research focusing on black maternal mortality.



Tobechi Udeh

OUTREACH & SOCIAL MEDIA
ASSISTANT
CSULB

Tobechi Udeh graduated from California State University Long Beach with BS in Health Science and an option in community education. She is passionate about pursuing a career in the healthcare field where she can work with minority populations in the pursuit of health equity. Tobechi is an Outreach & Social Media Assistant for the Black Health Equity Collaborative.



Noemi Mendez, MPH

INTERNAL PROGRAM
COORDINATOR
CSULB

Noemi Mendez recently earned a Master's in Public Health degree at California State University, Long Beach. She has a BA in Sociology from UCLA where she further developed her passion for leading community centered approaches to achieve optimal health in Black and Latinx communities. Noemi has extensive experience with coalition building, community outreach, partnership development, facilitating health education classes, community organizing and evaluation of health education programs. Noemi also enjoys cooking new recipes for her family and is looking forward to spending more time with them soon.



Victoria A. Davis

EXTERNAL PROGRAM
COORDINATOR
CSULB

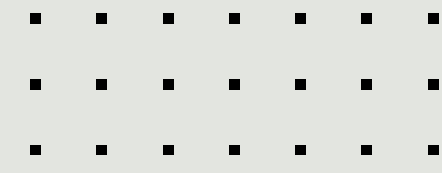
Victoria A. Davis is a current candidate for the Master's in Public Health degree with a focus in community health education at California State University, Long Beach. She received her undergraduate degree in psychology with a minor in counseling and social change from San Diego State University. Victoria has transitioned from an intern position to a supporting role on the city side. She now serves as the BHE Assistant Coordinator, working on program development, accounting, and more. After completing her Master's program, Victoria plans on continuing her education and obtaining a doctoral degree in public health with an emphasis in a social science. Her career goal is to conduct health equity research in service of the Black community.

Historically, the health status of Black populations has been significantly worse than other racial/ethnic subgroups due to systematic racism, health inequities, health behaviors, and comorbid health conditions. Due to health disparities and systemic anti-Black racism, the need for mitigation efforts in the Long Beach Black community is greater now than in prior history. This need will continue to grow, without mitigation, during future disasters or public health crises.

The City of Long Beach Department of Health and Human Services partnered with Dr. Amber Johnson of California State University, Long Beach to begin developing a Black Health Equity Team to address Black Health Equity and Disparities. The Black Health Equity Fund, a million-dollar CARES Act allocation, provides services to Long Beach Black residents via grant funding for local Black-serving nonprofits and businesses. The Black Health Equity Collaborative (BHEC) was established as an informal collaborative partnership among Black-serving provider agencies, nonprofits, and for-profit small businesses to promote health and wellness to reduce risk factors and mortality among Long Beach Black residents.

In 2022, BHEC was awarded 501(c)(3) non-profit status and BHEC continues to grow collaboratively through regular meetings to continue working towards our shared mission. BHEC continues to build its leadership structure and overall organization goals to effectively reduce health inequities among Long Beach Black residents.

GLOBAL ENGAGEMENT



DISCOVER A NEW PASSION AND MAKE A DIFFERENCE THROUGH CCPHIT!



California Consortium
for Public Health
Informatics and Technology

STUDY ABROAD IN
SOUTH KOREA!

INTRODUCTION TO PUBLIC HEALTH INFORMATICS AND TECHNOLOGY

Course: HSC 260
Dates: June 20th - July 8th
Units: 3
Modality: Face-to-face
Instructor: Dr. Brian Kwan
[Link to apply](#)



GLOBAL HEALTH

Course: HSC 420
Dates: June 20th - July 8th
Units: 3
Modality: Face-to-face
Instructor: Dr. Kamiar Alaei
[Link to apply](#)



STUDY ABROAD OPPORTUNITY

The Introduction to Public Health Informatics and Technology course (above) is an approved CCPHIT course. Upon completing this course as well as other approved CCPHIT courses, you may become eligible for a paid internship opportunity through the CCPHIT!

Make sure to fill out the [interest form](#)!

For more information, contact
Dr. Brian Kwan (brian.kwan@csulb.edu)
Dr. Kamiar Alaei (Kamiar.Alaei@csulb.edu)
for additional questions.



DEPARTMENT OF HEALTH SCIENCE



THANK YOU

