

CSULB Faculty Center Newsletter

February 2025

Lecturer Faculty Orientation 1/24/25



Andrew Fogleman (History) Elaine Bernal (Chemistry) and Sabrina Landa (College of Business) share their experiences at CSULB.

The Faculty Center and Faculty Affairs were pleased to welcome Lecturer faculty to Lecturer Orientation 2025, held in the Anatol Center on Friday, January 24. Participants heard from the California Faculty Association, enjoyed lunch and a Resource Fair on the patio and learned about Lecturer pay and benefits. They learned about The Lecturer Experience at CSULB and attended a workshop on Lecturer Evaluations.

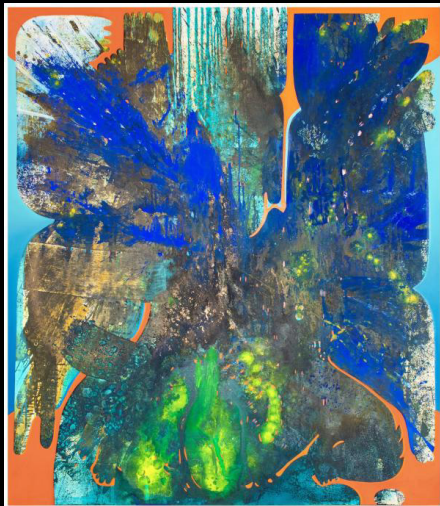
Join the Faculty Center and the Kleefeld Museum for Coffee and Community

FREE ADMISSION
FREE WEEKLY EVENTS
FREE MEMBERSHIP



museum store • sculpture gardens • art park

Tuesday Feb. 25, 9-10:30 @the Kleefeld Museum



Vian Sora, *Lapped*, 2023.

The Kleefeld curatorial staff will take us on a tour of the new exhibitions opening February 13, including "Inner Vision: Abstraction and Cognition."

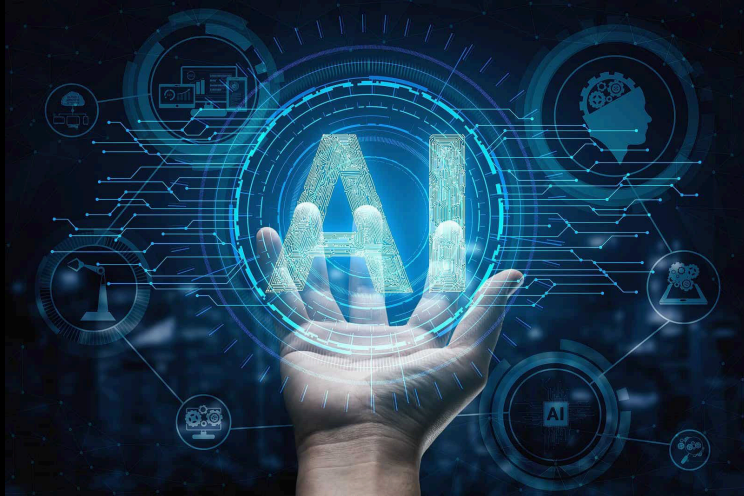
We will start with a tour and finish with time for coffee, pastries, and networking.

Attendance is limited - sign up early!

REGISTER HERE

*Academic Technology Services (ATS) and the Faculty Center Present
a workshop series*

Faculty Perspectives on Artificial Intelligence in College Pedagogy



*Hear from CSULB faculty about how and why they
use (or discourage) AI in their classes*

Session 1:

**Faculty Perspectives on AI in College Pedagogy
2/26, 11-1. Anatol Center (AS-119)**

**REGISTER [HERE](#) FOR SESSION 1 - SPACE IS LIMITED
BOXED LUNCH INCLUDED FOR REGISTRANTS**

Save the date for Session 2:

**College Coursework: Options for Incorporating AI.
3/26, 11-1. Academic Senate Conference Room (AS-125).**

Considering Cultural/Identity Taxation at CSULB: Findings from the Race-Related Cultural Taxation Summit



Thursday, February 6, 10-12 on ZOOM

Cultural taxation burdens under-resourced individuals with extra service and emotional labor to support students, colleagues, DEIA initiatives and representation. This session describes a participatory research project conducted on campus, and findings from a faculty and staff summit on race-related cultural taxation at CSULB. We will discuss and examine 7 dimensions of cultural taxation and consider how findings from the project may be used to inform the creation of more equity-centered RTP policies and activities to support our community.

Research and Presentation by:

- **Dr. Tiffany Brown, Professor, Child Development & Family Studies**
 - **Dr. Anna Ortiz, Dean of the College of Education**
 - **Dr. Kellie Walters, Associate Professor, Kinesiology**
- **Alondra Enriquez, Assistant Director, Latinx Resource Center**

REGISTER HERE

Academic Integrity and Restorative Justice

A Faculty Center workshop by

Trace Camacho, Associate Dean of Students



This workshop will provide advanced pedagogical, curricular, and instructional strategies that foster an affirming, equitable, and humanizing learning environment for racially and ethnically diverse learners. Participants will examine the tenets and application of culturally responsive and sustaining pedagogies and develop action plans to enhance their praxis of racial and social justice education.

Thursday Feb 20, 10-12

Academic Senate Conference Room (AS-125)

includes Continental breakfast

Space is limited

REGISTER EARLY HERE

*Faculty Affairs and the Faculty Center Present
an RTP Workshop:*

Ideas for Equity in Department RTP Policies



Wed Feb 5, 9:30-11:30 on ZOOM

For faculty who would like to learn about best equity practices for new CSULB Department RTP policies. This workshop is designed to help those drafting these policies to learn about and discuss three key areas in which RTP policies can promote greater equity: Cultural/Identity Taxation; Scholarship of Engagement; and student evaluations. We will share research and model policies that may serve as a starting point for different departments and disciplines.

Facilitators:

- **Dr. Malcolm Finney, Interim Assistant Vice President for Faculty Inclusive Excellence**
 - **Dr. Raven Pfister, Co-Lead, CLA Strategic Plan Team 4 (Evaluations) Lecturer, Communication Studies**
- **Dr. Emily Berquist, Interim Director of the Faculty Center, Co-Lead, CLA Strategic Plan Team 4 (Evaluations)**

REGISTER HERE



FACULTY FORMATIVE
FEEDBACK PROJECT

Applications are open for the Faculty Formative Feedback Project Fall 2025

Join a distinct group of more than 160 faculty and work with a collaborative partner outside of your discipline to increase student engagement. The Faculty Formative Feedback Project (FFFP) seeks committed instructional faculty (lecturers and tenure-track) who want to gain formative feedback on their teaching from a triad of data sources: student perceptions, instructor self-reflections, and teaching visits by a trained observer.

You will be rewarded with a letter of participation and a digital badge after successfully completing the project. Past participants have used the letter to demonstrate their effort to reflect formatively in improving pedagogy in formal evaluations.

APPLY HERE NOW

Applications due Feb 14, 2025

Questions? Email aa-fffp@csulb.edu

New Faculty Academy

The New Faculty Academy is for pre-tenure faculty and Lecturers in their first five years on campus, and is a chance to explore and develop skills that will support you as a new faculty member at CSULB. Sessions will be centered around key strategic areas for early career faculty and feature expert guest speakers from across our campus. We will prepare by completing recommended readings from *Candid Advice for New Faculty Members* and *What the Best College Teachers Do* (both available as free ebooks at the CSULB library).

All sessions meet on Zoom, 2-3 pm.

2 sessions left this year!

2/27 Surviving Faculty Politics
3/24 Achieving Work/Life Balance

Faculty members who complete all 6 zoom sessions will receive a certificate. After the 6 sessions, we will meet in person for a lunch.

Save the date for New Faculty Academy Lunch!
4/30, 12-2. Anatol Center.

**Register Here for
zoom sessions**

W O C A

Women of Color in Academia



WOMEN OF COLOR IN ACADEMIA aims to:

- Create awareness of the impact of the intersectionality of race, gender, and ethnicity on the professional experiences of women of color faculty @CSULB
- Increase institutional support to promote the success of our faculty women of color
- Create a support network for WOCA across the university, with special attention to mentoring and professional development

SPRING 2025 WOCA Events:

2/12 - Grants and Fellowships

Workshop, 12-1:30

3/21 - WOCA Yoga, 11-12

5/2 - Wellness Retreat, 10-2

**Email WOCA@csulb.edu
for more information**

On the following pages, please find announcements from our campus partners.

If you have any inquiries about their upcoming programming, please reach out to them directly.

If your organization would like to share event announcements in future issues, please contact the Faculty Center director, Emily Berquist, at emilyberquist@csulb.edu.



Faculty Climate Justice and Sustainability Workshop

The Office of Sustainability and the President's Commission on Sustainability invite you to participate in the Faculty Climate Justice and Sustainability Workshop. The goal of the workshop is to help CSULB faculty increase their awareness about the intersections of sustainability, climate change, and social justice issues; and to learn strategies for connecting these topics to core concepts in their disciplines.

Participants receive \$150 in Professional Development funding.

February 7, 8:30 am to 3 pm. Horn Center 106.
Coffee, Lunch, and Snacks Provided.

REGISTER [HERE](#) BY MONDAY, FEBRUARY 3.

For questions, contact the Office of Sustainability at
sustainability@csulb.edu



Mental Health Support Simulations

Virtual Training for Faculty & Staff

Mental Health Support Simulations is a new simulated and immersive training experience for all CSULB faculty and staff. This unique training tool was built specifically for CSULB and features gamified experiences where faculty and staff players practice genuine empathy, active listening, and facilitating appropriate campus referrals to wellness resources.

This training takes an innovative approach to learning and is so much more than a game - It's a gateway to creating a more empathic, confident, and student-ready campus community.

Know Before You Play

- The virtual simulation is only available on desktop and laptop devices. It is not available on mobile devices.
- Loading the game can take up to **2 minutes** in your browser. Use these brief moments to take some breathers at your desk and thanks for being patient!
- You can provide feedback after completing each module OR wait until completing all four modules to provide feedback.
- There are stories, language, and events within these simulations that some people may find unsettling. If you experience severe distress while engaging in these simulations, please reach out to the campus resources for faculty and staff well-being, such as the Faculty/Staff assistance program or Life Matters by Empathia.

[PLAY NOW](#)



Learn more
using the SSO App



CALIFORNIA STATE UNIVERSITY
LONG BEACH
Student Affairs

BLACK HISTORY MONTH
COOKOUT

**TUESDAY,
FEBRUARY 4
12:00 PM TO
2:00 PM**

**MLK
CELEBRATION**



**THURSDAY,
FEBRUARY 6
11:00 AM TO
1:00 PM**

**BLACK STUDENT,
FACULTY, STAFF & ALUMNI
MIXER**



**TUESDAY,
FEBRUARY 13
4:00 PM TO
6:00 PM**



We are here for you

The Financial Aid and Basic Needs offices are excited to announce a series of Scholarship Workshop & Writing Retreats for students as we approach the March scholarship deadline.

Students will have the opportunity to hear from a Financial Aid Counselor about where and how to access scholarships and financial aid applications. Following this, the Basic Needs team will host a writing retreat featuring free food and mentors (faculty/staff volunteers) to help students craft their personal scholarship statements.

We are currently seeking volunteers to assist students in developing strong scholarship statements. If you are a skilled writer or passionate about mentoring students in crafting personal statements, we would greatly value your support! This is a great opportunity to connect with students, foster a caring and supportive environment, and support their success.

SIGN UP TO VOLUNTEER HERE

For questions please contact

*Danielle Munoz-Channel, Director of Basic Needs @Danielle.munoz@csulb.edu or
Riley Cooper, Assistant Director of Operations, Financial Aid @riley.cooper@csulb.edu.*

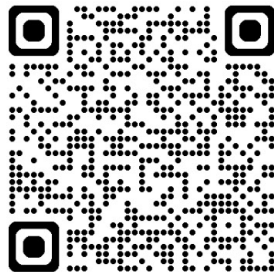


Join us!!

CSULB Library

Speaker series

**Dr. Keith Claybrook
Department of Africana Studies
will be our guest speaker for
Black History Month
Feb 19th at 12pm.
Scan here for more details!**



MENTAL HEALTH FIRST AID FOR HIGHER EDUCATION

Research shows nearly

15 in university students is affected with ANXIETY OR DEPRESSION.

The Conversation via the American College Health Association

In spring 2017, nearly

40% of college students said they had felt so depressed in the prior year that it was difficult for them TO FUNCTION.

Time via American College Health Association

Young adults between the ages of

18–25 are at highest risk for OPIOID USE PROBLEMS.

NBC News

Why Mental Health First Aid?

Mental Health First Aid for Higher Education teaches you **how to identify, understand and respond to signs of mental illnesses and substance use disorders**. This 8-hour training — which focuses on the unique experiences and needs of college students — gives you the skills you need to reach out and provide initial support to someone who may be developing a mental health or substance use problem and help connect them to the appropriate care.

WHO SHOULD TAKE IT

- Students (at least 18 years of age)
- Faculty members
- Resident advisors
- Campus law enforcement
- Academic advisors
- Counselors
- Campus clergy
- Financial aid employees
- Coaches and athletic personnel
- Administrators
- Librarians

- A discussion of campus culture and its relevance to the topic of mental health.
- A discussion of the specific stress and risk factors faced by those in higher education.
- Applying the action plan in a number of scenarios designed specifically for faculty, administration and students.
- A review of the mental health resources available on campus and through partnerships in the community.

The course will teach you how to apply the ALGEE action plan:

- **Assess** for risk of suicide or harm
- **Listen** nonjudgmentally
- **Give** reassurance and information
- **Encourage** appropriate professional help
- **Encourage** self-help and other support strategies

WANT TO TAKE THE COURSE?

Where: Online for CSU Faculty

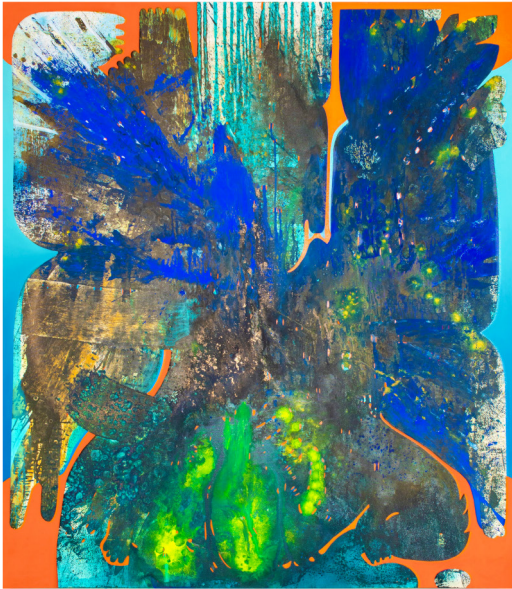
When: Various Dates

REGISTER BELOW!

<https://calstate.eventsair.com/mental-health-first-aid---spring-2025/registration/Site/Register>



MENTAL
HEALTH
FIRST AID®



VIAN SORA, *LAPPED*, 2023. OIL AND MIXED MEDIA ON CANVAS. 80 X 72 INCHES. COURTESY OF LUIS DE JESUS AND JAY WINGATE, LOS ANGELES. © VIAN SORA. IMAGE COURTESY OF LUIS DE JESUS LOS ANGELES.



CAROLYN
CAMPAGNA
KLEEFELD
CONTEMPORARY
ART MUSEUM

75TH
ANNIVERSARY

LBS Financial
CREDIT UNION

SAVE THE DATE

02/20/2025

On behalf of the Kleefeld Contemporary, you are invited to join us for our Spring 2025 opening reception to enjoy new art exhibitions, music, entertainment, refreshments, cash bar, art activities, and good vibes. — This event is **FREE** and open to all.



February 20, 5:30pm-8:30pm



Carroll Campagna Kleefeld Contemporary Art Museum



RSVP is highly suggested.

Scan the QR code to RSVP.

The Faculty Center Wants to Hear from You!

Where to find us:

**Brotman Hall, Room 276
FC@csulb.edu**

**Interim Director of the Faculty Center
Emily Berquist Soule
emily.berquist@csulb.edu**

Do you want to hear more from us?

**Sign up for our direct email list and
receive newsletters and event
notifications directly to your inbox.**