

CALIFORNIA STATE UNIVERSITY
LONG BEACH

MONEY MATTERS

Student Financial Services & Financial Aid and Scholarships

*Partners in a Student's Academic and
Financial Success at CSULB*

Student Financial Services

- We manage tuition and fee calculation
- We receive & apply payments
 - ✓ Individual Payments
 - ✓ Installment Plans
 - ✓ Financial Aid
 - ✓ Third-Party Sponsor Payments
 - ✓ College Savings Plan Payments
- We issue refunds and financial aid disbursements
- We issue tuition tax document 1098-T

How Student Financial Services Communicates with Your Family

To your student:

- Weekly email for student account activity
- Email leading up to a tuition due date
- Email before a major payment deadline
- Email when an item becomes past due
- Email if enrollment is cancelled due to non-payment
- Emails about signing up for e-refund, financial agreements, 1098-T, or other time sensitive action items.

To you:

- A student may complete a FERPA Authorization to Release form to allow parents or other individuals to ask questions about the student's account.

MyCSULB and Student Financial Services



View Charges Due and Account Activity

Make Online Payments

Enroll in Installment Payment Plans

Sign Up for E-Refund

View & Download 1098-T tax documents

Did you know...

Tuition at a CSU

- Not charged per-Unit
- Based on **enrollment status**
 - Half-Time or Less (0 – 6 units)
 - Greater than Half-Time (7 units or more)
- “Resident” – refers to CA residents
- *Non-Resident* tuition is in addition to the Tuition Fee and is charged on a per-unit basis (Out-of-state or International Students)

Financial Aid Office

- We determine your student's eligibility for financial aid and coordinate federal, state and institutional awards.
- We disburse eligible financial aid to student accounts.
- We administer all financial aid programs.
- We maintain compliance and regulatory requirements with all aid programs to ensure funding is available.

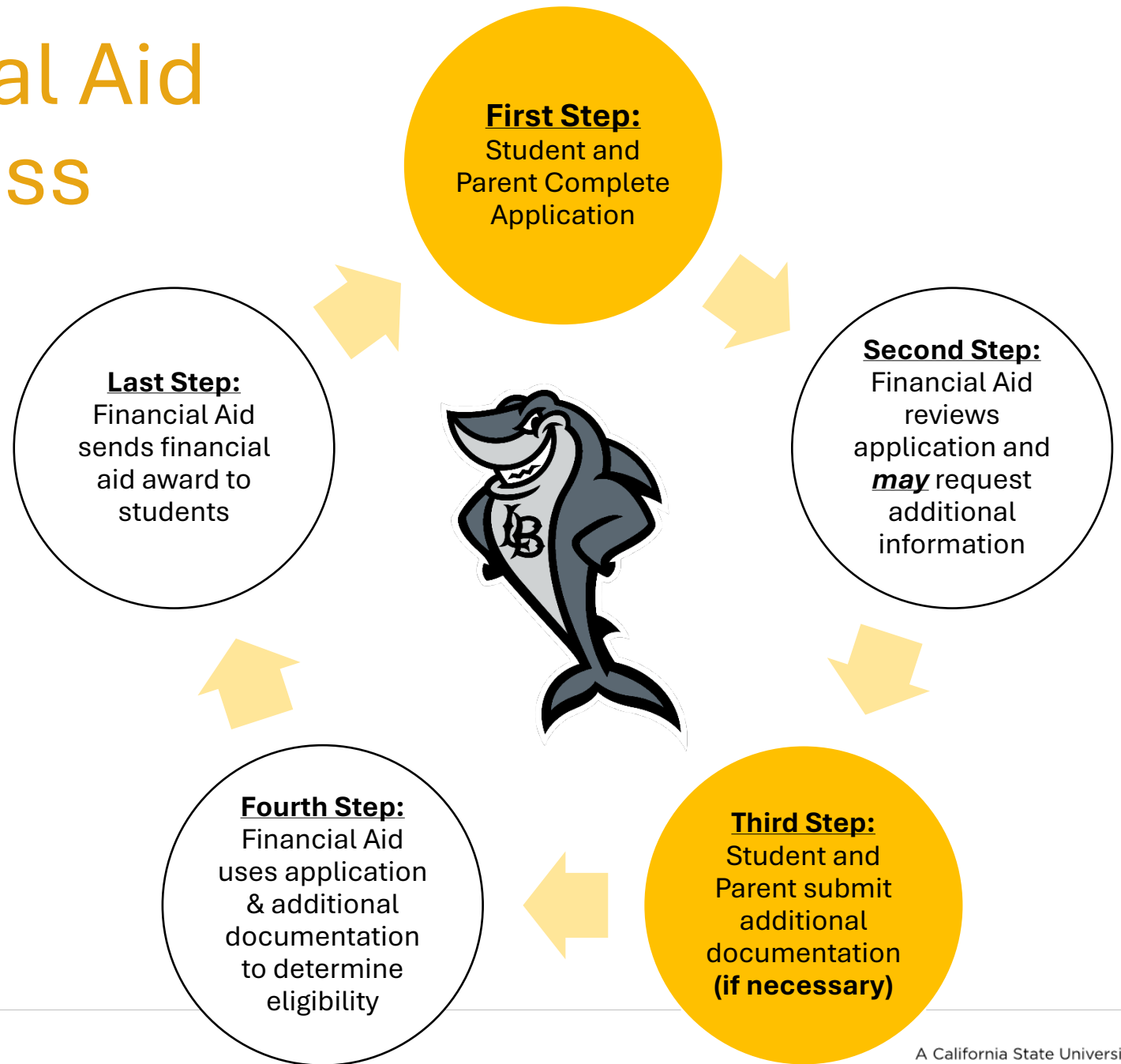
Applying for Financial Aid

- Students either submit the Free Application for Federal Student Aid (**FAFSA**) or California Dream Act Application (**CADAA**) to apply for financial aid.

FAFSA	CADAA
U.S. Citizen and Eligible Non-Citizen Students*	AB540-eligible, DACA or other qualifying visa status students*
Eligible for federal, state and institutional funding	Eligible for state and institutional funding only.
Completed at https://fafsa.gov	Completed at https://dream.csac.ca.gov

*Please note, the application is determined by the student's status, not the parent(s)

Typical Financial Aid Office Process



2024-25 Financial Aid Award Update

- Currently, financial aid packages are estimated for those that have completed their application. **We feel confident about our estimated packages, but they can be modified once official packages are available.**
- Mid-June, we are expecting official financial aid packages to be available.
- Priority Deadline was **May 2nd**, but we encourage everyone to continue to submit their FAFSA or CADAA applications.

How Do We Communicate to Parents?

- **Short Answer:** We cannot.
- **Long answer:** Family Educational Rights and Privacy Act of 1974 (**FERPA**) generally requires us to only share education records with students.
- Students can grant parent(s) access through their MyCSULB Student Center. More information can be found at <https://www.csulb.edu/student-records/ferpa-for-students>
- We can email you regarding Direct Parent PLUS Loans if necessary. This will be the email provided on the federal application.

How Do We Communicate to Students?

- We primarily communicate to students via email and their CSULB portal.
- If we are asking for documentation, it means we require it to determine eligibility. **Please encourage your student(s) to remain alert for all communications from financial aid office and ensure they keep up to date with requests from our office.**
- Most documentation is submitted through the CSULB portal.

Types of FAFSA Aid

Grants

Federal Pell Grant, Cal Grant,
State University Grant, Middle
Class Scholarship

Scholarships

Institutional; External

Federal-Work Study

Eligibility determined by FAFSA
information; no guarantee of
placement

Third-Party Payments

(Administered by SFS)
Cal Vet; Tuition Savings Plans;
Employer Benefits

Federal Student Loans

Borrowed from Dept. of Ed

Federal Parent Loans

Borrowed from Dept. of Ed.

Private Loans

Borrowed from bank or other
lender

Scholarships

- Beach Scholarship opportunities for Fall 2024 are now over.

Semester	Application Window	Award Disbursement
Fall	August – October	The following Spring
Spring	January – March	The following Fall

- However, we do have resources for external and non-CSULB scholarships:
<https://www.csulb.edu/financial-aid-and-scholarships/scholarships>

Enrollment and Financial Aid

- Financial aid is awarded based on an assumption of full-time enrollment (12 unit minimum).
- Many aid programs, including Federal Pell Grant, are based on enrollment levels. Keep in mind, the tuition costs for 7 units, 12 units and 16 units are the same*

Example: Enrolled in 12 units	
Tuition:	\$3,042
Campus fees:	<u>\$ 647</u>
	\$3,689
State University Grant:	-\$3,042
Pell Grant (max. amount):	<u>-\$3,698</u>
	-\$6,740
Balance	-\$3,051

Example: Enrolled in 16 units	
Tuition:	\$3,042
Campus fees:	<u>\$ 647</u>
	\$3,689
State University Grant:	-\$3,042
Pell Grant (max. amount): :	<u>-\$3,698</u>
	-\$6,740
Balance	-\$3,051

***These are standard amounts. Actual tuition, fees and aid eligibility is determined for each student.**

Enrollment and Financial Aid

- Bachelors' degree from CSULB requires 120 units.
- At least full-time ensures your student receives the maximum possible financial aid award.
- Be mindful of units required to graduate by having your student meet with their advisor. Transfer credits can also pay a part on your student's enrollment plan.

	1 st Year	2 nd Year	3 rd Year	4 th Year	Total Units
Fall	12	12	12	12	0
Spring	12	12	12	12	96 / 120
Total Units	24	24	24	24	0

	1 st Year	2 nd Year	3 rd Year	4 th Year	Total Units
Fall	15	16	16	15	0
Spring	15	12	16	15	120 / 120
Total Units	30	28	32	30	0

Enrollment and Financial Aid

- Enrolling in less than full-time will impact their financial aid, but not always the charged tuition and fees.

Example: Enrolled in 12 units	
Tuition:	\$3,042
Campus fees:	<u>\$ 647</u>
	\$3,689
State University Grant:	-\$3,042
Pell Grant (max. amount):	<u>-\$3,698</u>
	-\$6,740
Balance	-\$3,051

Example: Enrolled in 7 units	
Tuition:	\$3,042
Campus fees:	<u>\$ 647</u>
	\$3,689
State University Grant:	-\$3,042
Pell Grant (max. amount):	<u>-\$2,145</u>
	-\$5,187
Balance	-\$1,498

Example: Enrolled in 6 units	
Tuition:	\$1,764
Campus fees:	<u>\$ 647</u>
	\$2,411
State University Grant:	\$0
Pell Grant (max. amount):	<u>-\$1,849</u>
	-\$1,849
Balance	\$562

What We Want Every Parent and Student To Know

1. **Submit** your FAFSA/CADAA application
2. **Stay alert** for communications from Financial Aid
3. **Submit** any requested documentation from the financial aid office
4. **Be mindful** of enrollment and eligibility for financial aid.
5. **Contact** our office if you have any questions about your financial aid
6. **Applying** for financial aid is an annual process

What We Want Every Parent and Student To Know

1. **Submit** your FAFSA/CADAA application
2. **Stay alert** for communications from Financial Aid
3. **Submit** any requested documentation from the financial aid office
4. **Be mindful** of enrollment and eligibility for financial aid.
5. **Contact** our office if you have any questions about your financial aid
6. **Applying** for financial aid is an annual process

When is Payment Due?

Tuition Due

- Payment due dates are **assigned at the time of class registration**

Financial Aid Released

- **10 days prior to the start of classes**
- Until aid is released, amount of accepted awards defers payment

Disbursements Issued

- **Typically during week before school**
- E – refund is required to receive funds before classes begin
- Parent Plus loans mailed as checks during the first week of school

Payment Options

E-Check-Online

Credit Card-
Online
(2.65% Fee)

3rd Party Payments

College Savings
Plan

Cash, Check, Money Order,
Debit/ATM Card – In person

Financial Aid

Combine options to fit student's situation

How Aid Pays Charges

Tuition Charges & Payment Plans



Housing Charges



Excess Funds disbursed to student

Parent Plus Loan funds disbursed to parent

Common Questions

If I receive financial aid, do I need to pay by my assigned due date?

- If a student receives enough financial aid to cover all tuition and fees, that student **DOES NOT** need to pay by the assigned due date. A student **MUST** have accepted financial aid reflected on their account.

I don't receive enough financial aid to cover all of my fees. When do I need to pay my portion?

- Students should pay their portion of fees by their assigned due date on MyCSULB.

Common Questions

I can't pay my balance all at once, do you have payment options?

- Yes, we offer installment plans. Sign up is online through MyCSULB. Installment plans are available through the 4th week of the semester, BUT students must enroll before their assigned payment deadline and adhere to their assigned due dates.

How do I get my aid to pay my fees?

- We do that for you! Financial aid will disburse directly to the student's account to pay tuition, fees, and housing. Student Financial Services then refunds the student any excess aid. Students should sign up for e-refund ahead of time to receive funds before classes begin.

Common Questions

What if my circumstances have changed since submitting our financial aid application?

- We want to make sure that your family's financial aid eligibility matches up with your ability to contribute to your student's education. If your family's financial situation has changed, you can submit an Income Appeal form ([ES Forms website](#)) for review. You can also contact our office to talk over your family's scenario.

What if we didn't qualify for any grant aid?

- You should contact our office so that a financial aid staff member can review your student's application with you. We can also review your options, potentially including loans; scholarships; and appealing your family's eligibility for aid.

Our Offices are Open!

Financial Aid:

Staff available from 9:00am-5:00pm via:

- ❖ Submit a virtual “Service Ticket” for general financial aid questions
- ❖ In-person general support available from our **Intake Windows** – 1st floor Brotman Hall courtyard
- ❖ Schedule a virtual or in-person appointment with a Financial Aid Counselor in **Beach Central**

Student Financial Services:

Staff available from 8am-5pm via:

- ▶ **Phones:** (562) 985-5471, Option 3
- ▶ **Windows:** 1st floor courtyard at Brotman Hall; open 9:00am-5:00pm
 - ❖ Payments
 - ❖ Account Questions
 - ❖ Resolving Financial Holds
- ▶ **Online:** csulb.edu/financial-management/student-financial-services for information and Ask Elbee chat bot

Questions?

Resources

