

CURRICULUM OVERVIEW

GRADUATE PROGRAM IN APPLIED NUTRITION AND DIETETICS (GP) AT CALIFORNIA STATE UNIVERSITY, LONG BEACH (CSULB)

Our Graduate Program (GP) combines experience with accelerated coursework across 19 busy months

This means hands-on learning from the very beginning!

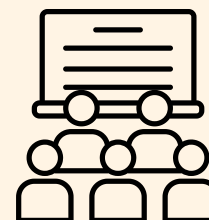
This program is intensive and by Fall of Year 1 will be full-time M-F. Schedules will vary based on the site requirements.

Year 1

In-Seat Classes

Spring

- Nutrition Assessment
- Evidence-Based Practice and Research Methods
- Community Nutrition Programs and Policies
- Foodservice for a Diverse Population



Summer

- Medical Nutrition Therapy I
- Culturally Sensitive Nutrition Counseling and Education
- Career Success Strategies for Nutrition Professionals (1 unit)
- Eating for the Planet: Sustainability and Food Systems (1 unit)

Fall

- Elective course for special emphasis
- Managing People, Budgets, and Problems in Food and Nutrition Settings
- Medical Nutrition Therapy II
- Supervised Experiential Learning - Community Nutrition Settings (Tues-Friday)

Year 2

Distance option in Year 2

Spring

- Dreams to Dollars: Marketing, Entrepreneurship, and Grant Writing for Nutrition
- Practice Applications: Nutritional Genomics, Pharmacology, and Supplements
- Capstone project or thesis course
- Supervised Experiential Learning - Clinical A (Tues-Friday)

All Year 2 courses online and experiential learning can occur anywhere in California



Summer

- Supervised Experiential Learning - Clinical B, Food Systems Management, Special Emphasis (Monday-Friday)