

# Campus Printing & Design

**PRODUCT CATALOG**

**BEACH**  

---

**SHOPS**

**EMAIL: [CPAD@CSULB.EDU](mailto:CPAD@CSULB.EDU)  
PHONE: 562.985.5050**

# PROFESSIONAL MARKETING CATALOG

## RELIABILITY

Every product undergoes a multi-step quality assurance process to ensure your product works correctly and looks great when it arrives.

## QUICK RESPONSE

Your dedicated account executive is always available to answer questions and provide information in a timely manner.

## FAST DELIVERY

Production times as low as 24 hours, and a free local delivery program ensure you receive your product on time.

## LIFE TIME WARRANTY

We stand behind our products and offer Lifetime Warranties on much of our hardware.

# TABLE OF CONTENTS

Canopy Frame & Print Options .....	4 - 5
Canopies .....	6 - 7
Canopy Kits .....	8 - 11
Canopy Accessories .....	12
Flag Banners .....	13 - 18
Table Covers .....	19 - 27
Tabletop Displays .....	28 - 35
Retractable Banner Stands .....	36 - 41
Banner Stands .....	42 - 53
Tube & Pop-Up Displays .....	54 - 61
Trade Show Displays .....	62 - 72
Trade Show Booth Solutions .....	73 - 81
Booth Components .....	82 - 86
Outdoor Displays .....	87 - 95
All Substrates .....	96 - 102

KICK-BUTT  
NATURAL  
SPORTS  
NUTRITION  
MyFitMode.com

MODE™

KICK-BUTT  
NATURAL  
SPORTS  
NUTRITION  
MyFitMode.com

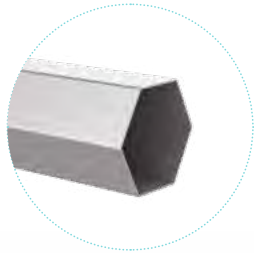
FUEL YOURSELF  
WITH REAL FOOD



MODE™

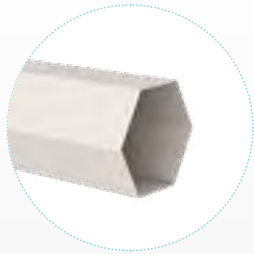


# CANOPY FRAME & PRINT OPTIONS



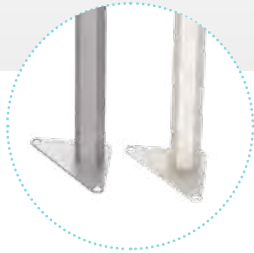
## Aluminum Frame

Aircraft Grade  
Rust Free  
Anodized 2"



## Steel Frame

Professional Grade Steel  
Hammer Tone  
Powder Coated



## Feet

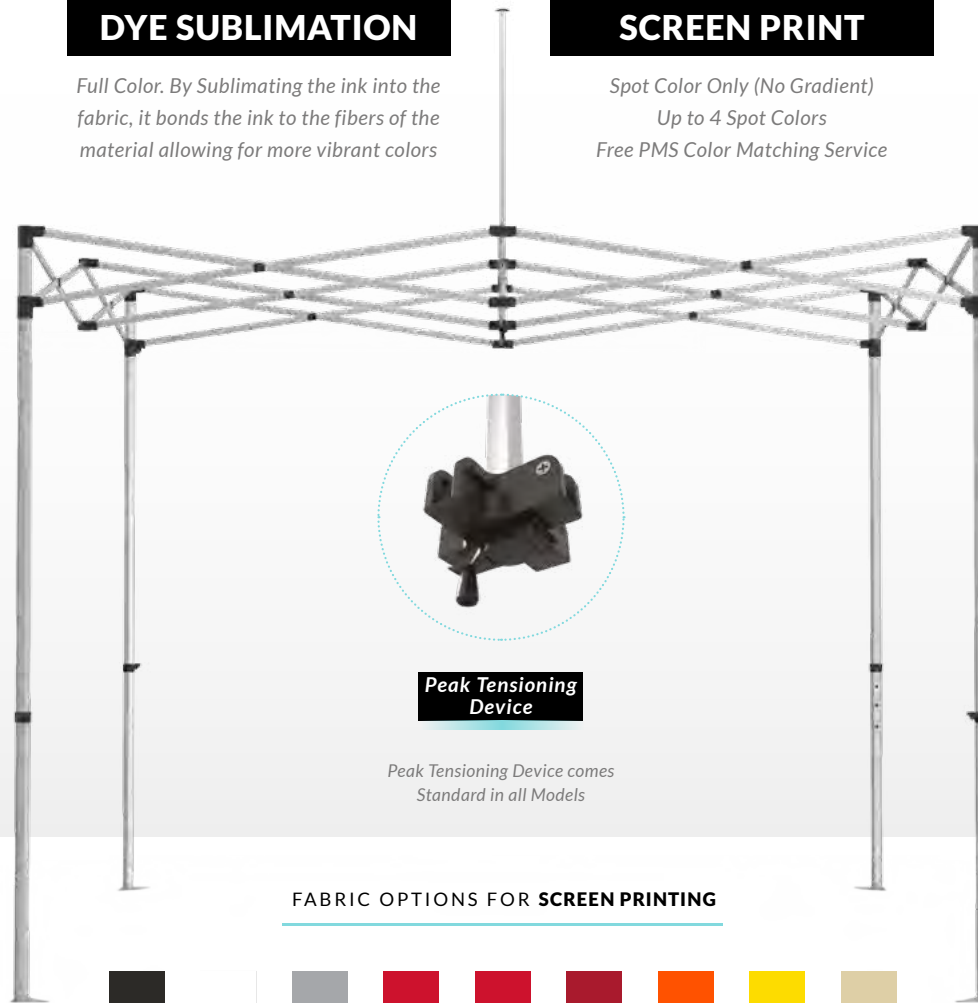
Oversized footpads provide  
additional support and stability

## DYE SUBLIMATION

Full Color. By Sublimating the ink into the fabric, it bonds the ink to the fibers of the material allowing for more vibrant colors

## SCREEN PRINT

Spot Color Only (No Gradient)  
Up to 4 Spot Colors  
Free PMS Color Matching Service

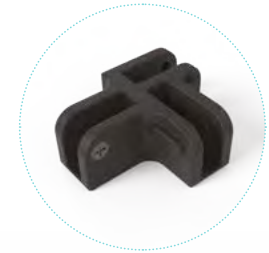


## Peak Tensioning Device

Peak Tensioning Device comes  
Standard in all Models

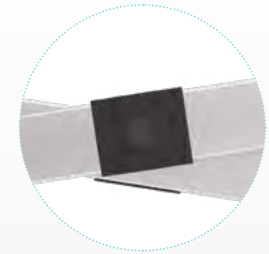
## FABRIC OPTIONS FOR SCREEN PRINTING

Black	White	Cool Grey 6 C	485 C	186 C	187 C	Orange 021 C	Yellow C	7500 C
375 C	355 C	3425 C	Reflex Blue C	293 C	300 C	282 C	2955 C	2685 C



## Connectors

Specially engineered nylon and fiberglass connectors provide frame flexibility in high winds allowing frame to flex without cracking the joints



## Truss Bar

Heavy duty, double wall, reinforced truss bars for additional stability and support



## Thumb Latch

Easy release thumb latches make set up and break down quick and easy

All canopy frames include interchangeable components making repair or replacement easy and affordable!

# PREMIER CANOPIES

Our professional grade canopy is the best in its class, setting the bar as the ultimate in customized, portable shelters. With its 17 inch valances, heavy duty 600 Denier Polyester top, easy release thumb latches, vibrant dye sublimated print and a lifetime warranty on our frames, we set ourselves apart from the competition. Attract customers, increase brand awareness, and say it in color!

AVAILABLE IN SIZES

**5X5 / 6.5X6.5**

**10X10 / 10X15 / 10X20**

600 DENIER POLYESTER

DYE SUBLIMATED

SCREEN PRINTED

WEATHER RESISTANT



10' x 10'



10' x 15'



10' x 20'



## CANOPY SIDE SKIRTS

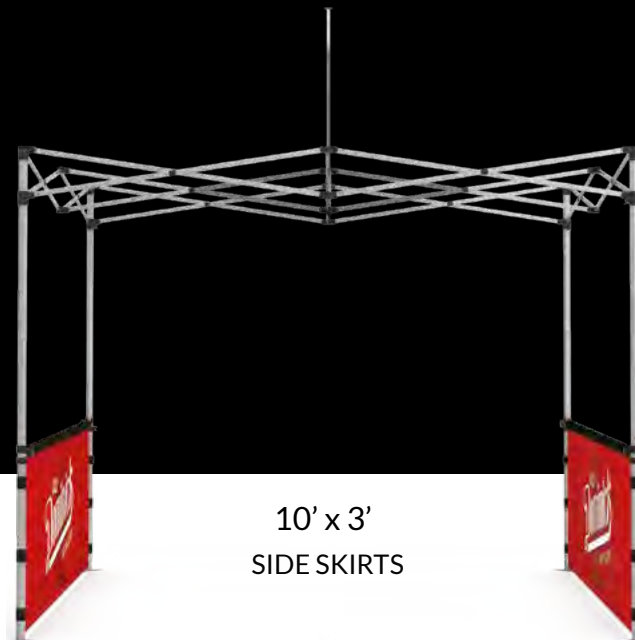
Single Or Double Sided

- 600 Denier Polyester
- Skirt Rail Hardware (includes Rail and Two Clamps)
- White or Black Back Urethane Coating

## CANOPY BACKWALL

Single Or Double Sided

- 600 Denier Polyester
- White or Black Back Urethane Undercoating
- 2" Loop Velcro



10' x 3'  
SIDE SKIRTS



10' x 7'  
BACKWALL

CANOPY  
**KITS**

# CANOPY KIT #1 / #2

Sometimes all it takes is adding a Loose Table Throw or a pair of Feather Flags to create a unique and finished look. These Canopy Kits are a sure way to increase brand visibility for less!

ALL CANOPY KITS INCLUDE  
FRAME, TOP  
ROPES & CARRY BAG

KIT #1



10' x 10' Pro Grade Steel Frame  
Dye Sublimated Canopy Top  
6' Loose Table Throw



X-BASE

KIT #2



Flag Kit Includes:  
Flag, Pole Hardware, Carry Bag, Ground Stake  
(Premier X-Base Sold Separately)



X-BASE

10' x 10' Pro Grade Steel Frame  
Dye Sublimated Canopy Top  
12' Double Sided Feather Flags (x2)



# CANOPY KIT #3 / #4

Adding full walls and/or side skirts to a canopy gives it a finished look. Made with the same 600 Denier Polyester material as the tent top, a wall and two side skirts will instantly add appeal and increase brand visibility!

ALL CANOPY KITS INCLUDE  
FRAME, TOP  
ROPES & CARRY BAG

KIT #3



10' x 10' Pro Grade Steel Frame  
Dye Sublimated Canopy Top  
10' x 7' Single Sided Canopy Wall

KIT #4



10' x 10' Pro Grade Steel Frame  
Dye Sublimated Canopy Top  
10' x 7' Single Sided Canopy Wall  
10' x 3' Single Sided Canopy Skirts

# CANOPY KIT #5 / #6

Adding Side Skirts, a Back Wall and/or two Feather Flags to a canopy gives it a finished look. This canopy kit will instantly add appeal and increase brand visibility!

ALL CANOPY KITS INCLUDE

TOP, FRAME, ROPES

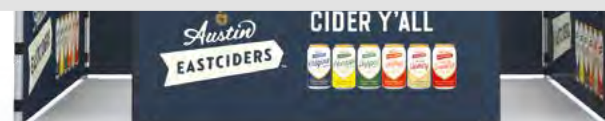
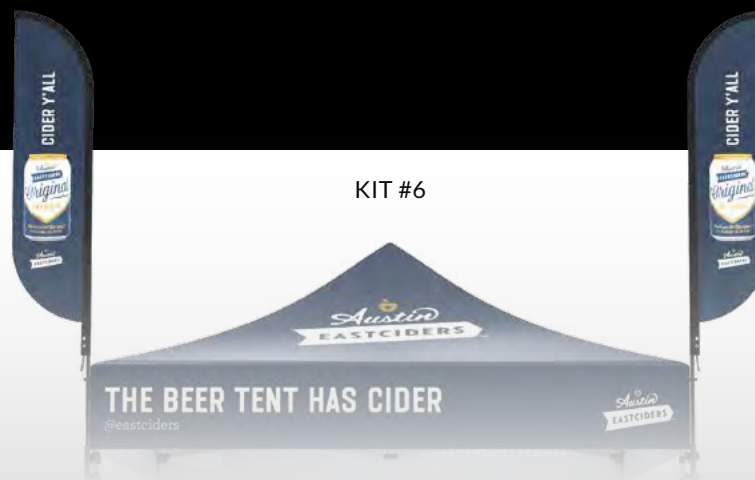
STAKES & CARRY BAG

KIT #5



10' x 10' Pro Grade Steel Frame  
Dye Sublimated Canopy Top  
10' x 7' Single Sided Canopy Wall  
6' Fitted Table Cover

KIT #6



10' x 10' Pro Grade Steel Frame  
Dye Sublimated Canopy Top  
10' x 7' Single Sided Canopy Wall  
6' Fitted Table Cover

12' Double Sided Feather Flag  
**Flag Kit Includes:**  
Hardware, Ground Stake,  
Carry Bag & Canopy Flag Holders



# CANOPY ACCESSORIES

Create an outstanding Canopy display with our many canopy accessories. Whether it be for easy transportation, stability or design, our accessories are sure to draw attention to your canopy display.



SAND BAGS / XL



FILLABLE PLASTIC LEG WEIGHT



XL STAKE KIT W/ STRAPS



LEAD TRUSS BAR WEIGHT (35 LBS)



CANOPY LED LIGHTS



CONCRETE FILLED LEG WEIGHT



CANOPY FLAG HOLDER



CANOPY HARD CASE

CANOPY ROLLER BAG



CANOPY SIGN HOLDER

FLAG  
**BANNERS**

SKU # FLG - FB

# FEATHER BANNER

Our Premier Feather Banner is one of our most popular designs for outdoor flags, and is extremely resilient to all types of climates and conditions. Best of all, it's unique design is wider than most other flags of this shape, giving your client more space for their logo or text.

FULL COLOR

SINGLE & DOUBLE SIDED

POLYESTER FABRIC

DYE SUBLIMATED

AVAILABLE IN SIZES  
8' / 10' / 12' / 15'

**DYE SUBLIMATED PRINT - Polyester Fabric**

6 Month Graphic Warranty  
(Against Manufacturer Defect)

### WHAT'S INCLUDED?

- Flag Graphic
- Pole Hardware
- Ground Stake
- Carry Bag



GROUND STAKE



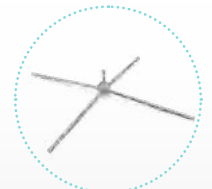
STANDARD X-BASE



WATER WEIGHT BAG



FLAT BASE



PREMIER X-BASE

**Heavy Duty Aluminum Pole**

Limited Lifetime Warranty  
(Against Manufacturer Defect)



29.5" W x 141" H



27.5" W x 114" H



23.5" W x 94.5" H



23.5" W x 79" H

SKU # FLG - BB

# BLADE BANNER

Our Premier Blade Banner is one of our most popular designs for outdoor flags, and is extremely resilient to all types of climates and conditions. Best of all, it's unique design is wider than most other flags of this shape, giving your client more space for their logo or text.

AVAILABLE IN SIZES  
8' / 10' / 12' / 15'

FULL COLOR

SINGLE & DOUBLE SIDED

POLYESTER FABRIC

DYE SUBLIMATED

DYE SUBLIMATED PRINT - Polyester Fabric

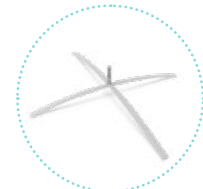
6 Month Graphic Warranty  
(Against Manufacturer Defect)

### WHAT'S INCLUDED?

- Flag Graphic
- Pole Hardware
- Ground Stake
- Carry Bag



GROUND STAKE



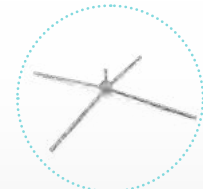
STANDARD X-BASE



WATER WEIGHT BAG



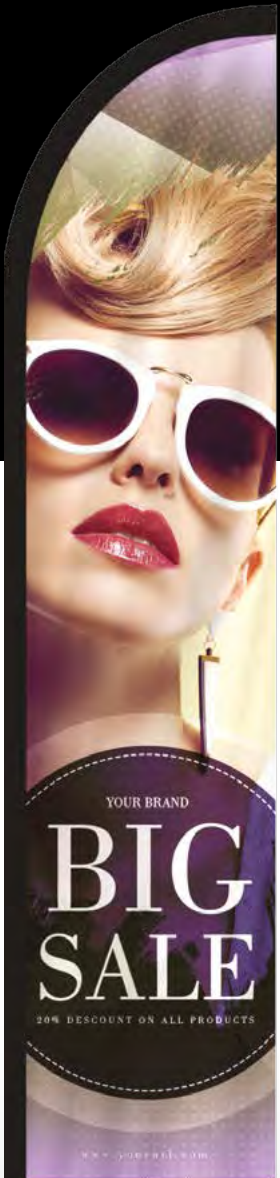
FLAT BASE



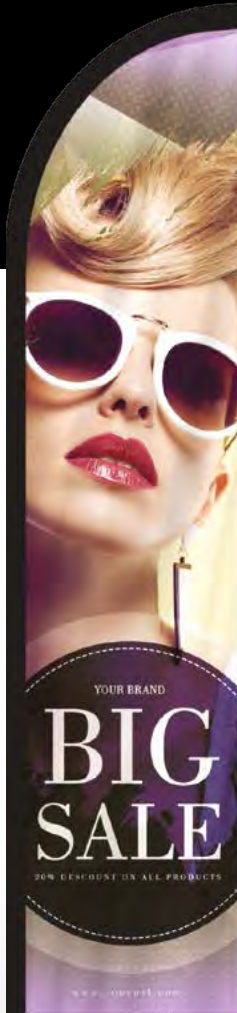
PREMIER X-BASE

Heavy Duty Aluminum Pole

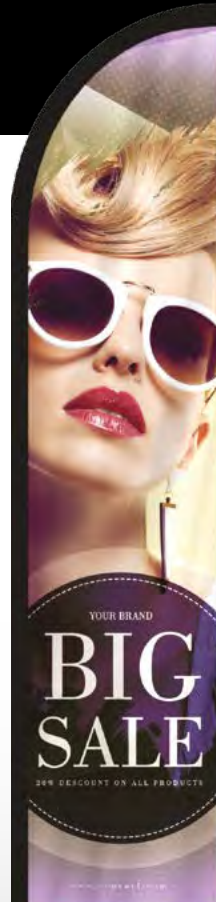
Limited Lifetime Warranty  
(Against Manufacturer Defect)



29.5" W x 141" H



27.5" W x 114" H



23.5" W x 94.5" H



23.5" W x 79" H



SKU # FLG - TB

# TEARDROP BANNER

Our Teardrop Banner is available in 4 sizes and can be secured with either an X-base or Ground Stake. The flag material is weather resistant and can perform well in most climates. A water bag option available if placing in heavier wind conditions.

AVAILABLE IN SIZES  
7' / 9' / 11' / 14'

FULL COLOR

SINGLE & DOUBLE SIDED

POLYESTER FABRIC

DYE SUBLIMATED



**DYE SUBLIMATED PRINT - Polyester Fabric**

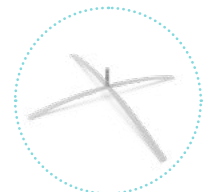
6 Month Graphic Warranty  
(Against Manufacturer Defect)

### WHAT'S INCLUDED?

- Flag Graphic
- Pole Hardware
- Ground Stake
- Carry Bag



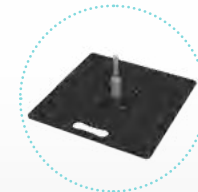
GROUND STAKE



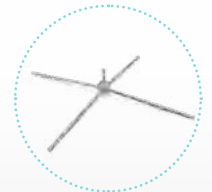
STANDARD X-BASE



WATER WEIGHT BAG



FLAT BASE



PREMIER X-BASE

**Heavy Duty Aluminum Pole**

Limited Lifetime Warranty  
(Against Manufacturer Defect)

SKU # FLG - FB

# RECTANGULAR FLAG BANNER

Drive traffic and be seen with the ever popular flag banner. These distinctive flags stand out and are ideal for both indoor and outdoor use. Our professional grade, custom printed banners offer the ultimate in high quality and vivid imagery that's sure to draw attention to your brand.

FULL COLOR

SINGLE & DOUBLE SIDED

POLYESTER FABRIC

DYE SUBLIMATED

## AVAILABLE IN SIZES

8' / 10' / 12'

### DYE SUBLIMATED PRINT - Polyester Fabric

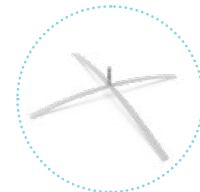
6 Month Graphic Warranty  
(Against Manufacturer Defect)

### WHAT'S INCLUDED?

- Flag Graphic
- Pole Hardware
- Ground Stake
- Carry Bag



GROUND STAKE



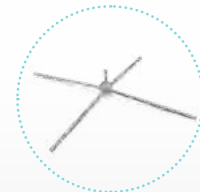
STANDARD X-BASE



WATER WEIGHT BAG



FLAT BASE



PREMIER X-BASE

### Heavy Duty Aluminum Pole

Limited Lifetime Warranty  
(Against Manufacturer Defect)



31.5" W x 98.5" H



31.5" W x 86.5" H



31.5" W x 71" H

SKU # FLG - FLB

# FLAGPOLE BANNER

Drive traffic and be seen with our flagpole banner. These large scale flags are perfect for outdoor events. Conferences, sporting events or anywhere you want to make a statement and draw awareness to your brand.

AVAILABLE IN SIZES

13' / 17' / 23'

FULL COLOR

SINGLE & DOUBLE SIDED

POLYESTER FABRIC

WATER FILLABLE BASE



43.5" W x 102.5" H



35.5" W x 78.5" H



29.5" W x 65" H



Aluminum Telescopic Pole

6 Month Graphic Warranty  
(Against Manufacturer Defect)

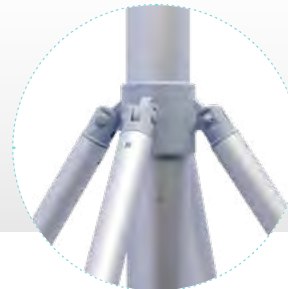




TABLE  
**COVERS**

SKU # TAB - TT

# LOOSE TABLE THROW

There isn't a simpler way to look more professional than by adding a high quality table throw to your booth or exhibit space. Say goodbye to trade show rentals and create a custom printed table throw for extra visibility.

AVAILABLE IN SIZES

4' / 6' / 8'

DYE SUBLIMATED PRINT

SCREEN PRINTED

7 OZ POLYESTER

300 DENIER POLYESTER



## SCREEN PRINT / Fabric Colors



SKU # TAB - ECON

# 3-SIDED TABLE THROW

Brand yourself with our 3-sided Table Throw, perfect when exhibiting with tabletop displays. The open back allows for easy access to storage underneath the table.

AVAILABLE IN SIZES

6' / 8'

DYE SUBLIMATED PRINT

SCREEN PRINTED

7 OZ POLYESTER

OPEN BACK



## SCREEN PRINT / Fabric Colors



SKU # TAB - FT

# FITTED TABLE COVER

There isn't a simpler way to look more professional than by adding a high quality Fitted Table Cover to your booth or exhibit space. Say goodbye to trade show rentals and create a custom printed table cover for extra visibility.

AVAILABLE IN SIZES

4' / 6' / 8'

DYE SUBLIMATED PRINT

SCREEN PRINTED

600 DENIER POLYESTER



## SCREEN PRINT / Fabric Colors



SKU # TAB - FT - ECON

# 3-SIDED FITTED TABLE COVER

Brand yourself with our 3-sided Fitted Table Cover, perfect when exhibiting with tabletop displays. An open back allows for easy access to storage underneath the table.

AVAILABLE IN SIZES

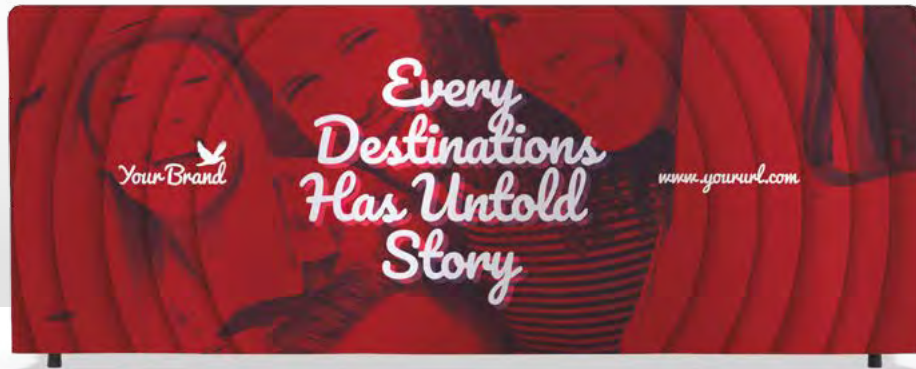
6' / 8'

DYE SUBLIMATED PRINT

SCREEN PRINTED

600 DENIER POLYESTER

OPEN BACK



## SCREEN PRINT / Fabric Colors





SKU # TAB - STRETCH

# STRETCH-FIT TABLE COVERS

Give your table a one-of-a-kind look and keep it clean with the stretch fit table cover. Printed with high quality stretch fabric, this table cover looks stunning in any environment. Fabric hooks on the inside attach to the table feet to keep the tension of the display tight.

AVAILABLE IN SIZES

6' / 8'

DYE SUBLIMATED PRINT

FULL COLOR

STRETCH POLYESTER FABRIC

6 MONTH WARRANTY

Stretch-Fit Table Cover



Cross-Over Stretch-Fit Table Cover



SKU # TAB - SF - ROUND / TAB - CVT

# CUSTOM TABLE COVERS

We offer a wide array of table covers, each provide a different aesthetic than the last. If you are looking to add appeal to a tradeshow booth with a circular table, then our Round Stretch-Fit Table Cover is the perfect solution. If you are looking for something that can be used at multiple events, look no further than our Convertible Table Cover.

AVAILABLE IN SIZE

8'

DYE SUBLIMATED PRINT

VELCRO SEWN INTO FABRIC

7oz POLYESTER

STRETCH FIT POLYESTER

## Round Stretch-Fit Table Cover

Our Round Stretch-Fit Table Cover is perfect for any circular table display. It's sleek appearance is sure to attract an audience to any tradeshow booth.

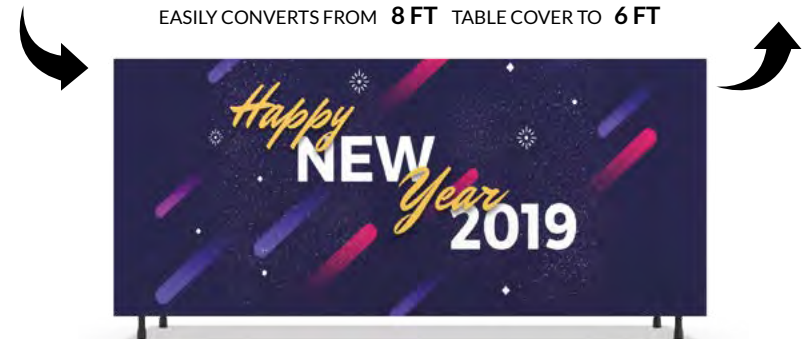


## Convertible Table Cover

Our convertible table throw is great for multiple events and display options. It comes with the same great print quality as our other table covers, but allows you to convert from an 8 ft down to a 6 ft size to use on smaller tables when needed.



EASILY CONVERTS FROM 8 FT TABLE COVER TO 6 FT





SKU # TAB - TT - BLANK

# BLANK LOOSE THROW

Our blank loose table throws are perfect for exhibits, trade shows and job fairs. They display best when accented with our table runners. Choose from a 6 ft or 8 ft throw with many different fabric color options.

AVAILABLE IN SIZES

6' / 8'

SCRATCH RESISTANT

SOFT KNIT POLYESTER

MACHINE WASHABLE

## AVAILABLE COLORS



White



Black



Yellow



Red



Blue



Green



SKU # TAB - RUN

# TABLE RUNNERS

*Our table runners are the perfect way to elevate your trade show booth with style and flare at an extremely affordable price. Our Table runners are versatile and will drape over the front, top and back of your event tables.*

## AVAILABLE IN SIZES

### 80" Length

24" W  
30" W  
36" W  
40" W  
44" W  
48" W  
60" W

DYE SUBLIMATED PRINT

SOFT KNIT POLYESTER

MACHINE WASHABLE

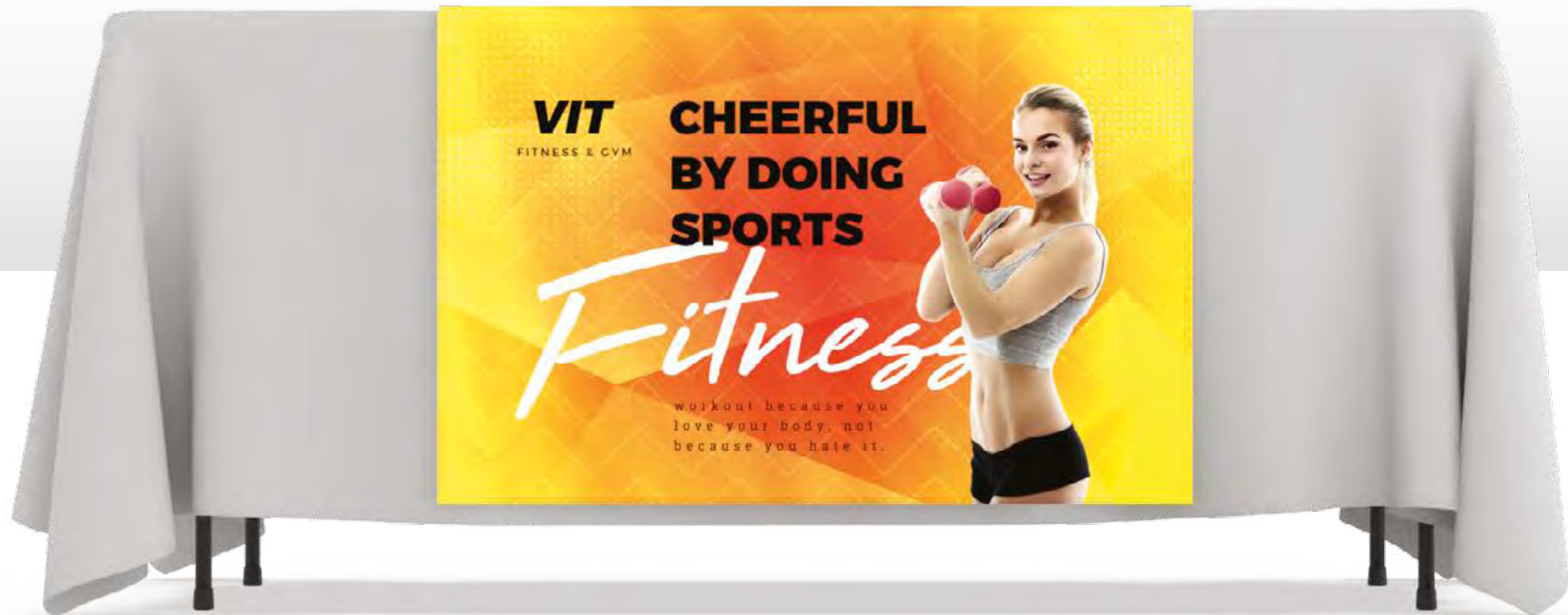


TABLE TOP  
**DISPLAYS**

SKU # TT - ECBS

# TABLE TOP ECO RETRACTABLE

Our tabletop retractable banner is portable, lightweight and economical. They are easy to travel with and set up in seconds. Printed on Gray Back Vinyl, the tabletop retractable banner is the perfect solution for trade shows, offices or point of purchase displays.

AVAILABLE IN SIZE

24" x 40"

SILVER ALUMINUM STAND

NYLON CARRY BAG

GRAY BACK VINYL



Silver Aluminum Stand

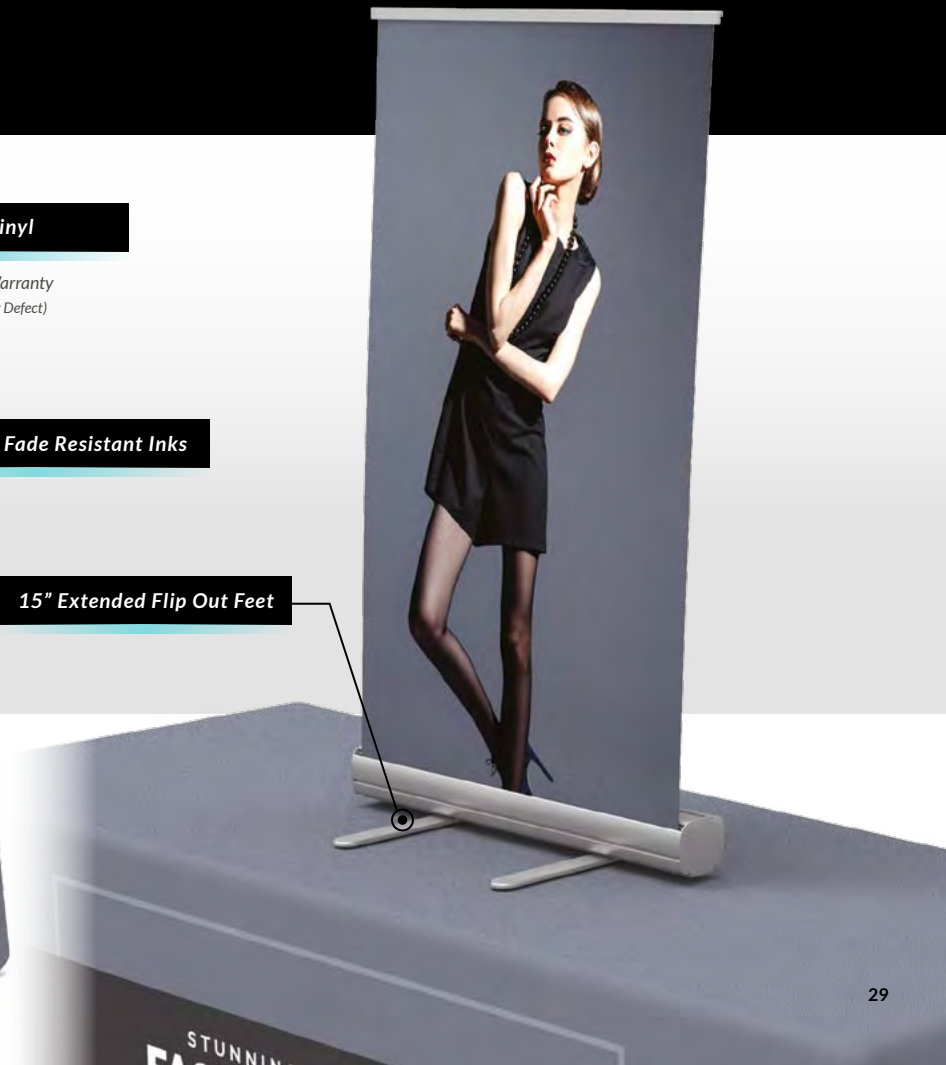
1 Year Hardware Warranty  
(Against Manufacturer Defect)

Gray Back Vinyl

6 Month Graphic Warranty  
(Against Manufacturer Defect)

Printed With Fade Resistant Inks

15" Extended Flip Out Feet



SKU # TT - RBS

# TABLE TOP MINI RETRACTABLE

Our tabletop mini retractable banner is portable, lightweight and economical. They are easy to travel with and set up in seconds. Printed on Gray Back Vinyl, the tabletop retractable banner is the perfect solution for trade shows, offices or point of purchase displays.

SINGLE SIDED

GRAY BACK VINYL

AVAILABLE IN SIZE

12" X 17"



Chrome End Cap

Silver Aluminum Stand



SKU # TT - MAGL

# TABLETOP MAGNETIC L-STAND

The Tabletop Magnetic L-Stand is one of our most versatile displays. The steel stand allows for a magnetic graphic to be easily installed, and when it's time for a new graphic, simply peel off the old one and replace it with the new graphic.

AVAILABLE IN SIZE

11" X 17"

SINGLE SIDED

.030" MAGNET

REPLACEABLE GRAPHIC



SKU # TT - XB

# TABLETOP X-BANNER

The Tabletop X-Banner is our most cost effective tabletop display. Measuring 11in x 15in and printed on Gray Back Vinyl, this small display offers a huge advertising and branding impact. This is the perfect display for those that have limited space but want to maximize their advertising budget.

SINGLE SIDED

GRAY BACK VINYL

REPLACEABLE GRAPHIC

AVAILABLE IN SIZE

**11" x 15"**



Collapsible Frame





SKU # PT - TT - ST

# TABLETOP STRAIGHT DISPLAY

Transform your table into an eye-catching display with our Premier Tube Tabletop Display Series. Vibrant graphics and an easy to assemble frame allow you to be ready for your event in minutes. Available in 6ft or 8ft widths, we have the perfect solution for your next tabletop event.

DYE SUBLIMATED PRINT

STRETCH POLYESTER FABRIC

MACHINE WASHABLE

AVAILABLE IN SIZES

6' / 8'



SKU # PT - TT - C

# TABLETOP CURVED DISPLAY

Transform your table into an eye-catching display with our Premier Tube Tabletop Display Series. Vibrant graphics and an easy to assemble frame allow you to be ready for your event in minutes. Available in 6ft or 8ft widths, we have the perfect solution for your next tabletop event.

DYE SUBLIMATED PRINT

STRETCH POLYESTER FABRIC

MACHINE WASHABLE

AVAILABLE IN SIZES

6' / 8'



SKU # PT - TT - S

# TABLETOP “S” SHAPED DISPLAY

DYE SUBLIMATED PRINT

STRETCH POLYESTER FABRIC

MACHINE WASHABLE

Transform your table into an eye-catching display with our Premier Tube Tabletop Display Series. Vibrant graphics and an easy to assemble frame allow you to be ready for your event in minutes. Available in 6ft or 8ft widths, we have the perfect solution for your next tabletop event.

AVAILABLE IN SIZES

6' / 8'



RETRACTABLE  
BANNER  
**STANDS**



# ECONOMY

SKU # RBS - ECON

Our Economy Retractable Banner Stands are great for trade shows, expositions and other promotional events. The stand sets up quickly; simply flip out the feet, raise the pole and lift the banner. This stand also has an automatic retracting feature that protects it from wear and tear while the included carry bag makes transportation a breeze.

FULL COLOR

1 YEAR WARRANTY

SINGLE SIDED

AVAILABLE IN SIZES

24" / 33" x 80"



Silver & Black Aluminum Stand

1 Year Hardware Warranty  
(Against Manufacturer Defect)

Gray Back Vinyl

6 Month Graphic Warranty  
(Against Manufacturer Defect)

Polysatin Fabric Print

6 Month Graphic Warranty  
(Against Manufacturer Defect)

#### WHAT'S INCLUDED?

- Installed Graphic
- Stand & Top Clamp
- 3-Piece Support Pole
- Padded Carry Bag
- Setup Instructions

15" Extended Flip Out Feet

Printed With Fade Resistant Inks



# ECO PLUS

SKU # RBS-ECO-PLUS

The Eco-Plus Banner Stand is great for trade shows, expositions and other promotional events. Similar to the economy retractable, the Eco-Plus comes with a one-year warranty but also boasts a more sleek design with chrome end caps and only one opposable foot. This stand offers the best combination of an appealing design, durability and affordability.

FULL COLOR

1 YEAR WARRANTY

SINGLE SIDED

AVAILABLE IN SIZE

**33" x 80"**



**Gray Back Vinyl**

6 Month Graphic Warranty  
(Against Manufacturer Defect)

**Polysatin Fabric Print**

6 Month Graphic Warranty  
(Against Manufacturer Defect)

#### WHAT'S INCLUDED?

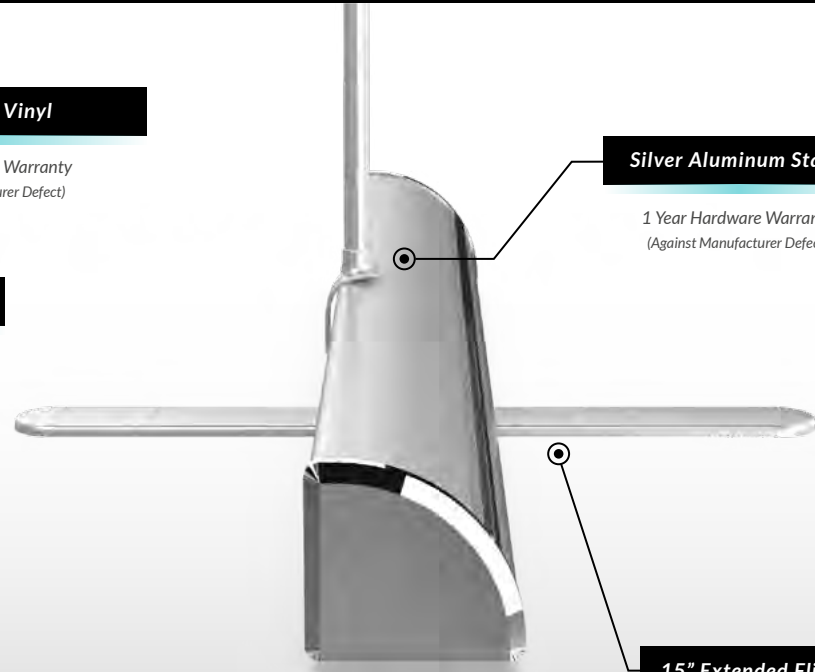
- Installed Graphic
- Stand & Top Clamp
- 3 Piece Support Pole
- Padded Carry Bag
- Setup Instructions

**Printed With Fade Resistant Inks**

**Silver Aluminum Stand**

1 Year Hardware Warranty  
(Against Manufacturer Defect)

**15" Extended Flip Out Foot**



# PLATINUM

SKU # RBS - PLAT

Our Platinum Retractable Banner Stands are great for trade shows, expositions and other promotional events. The stand sets up quickly; simply raise the pole and lift the banner. This stand also has an automatic retracting feature that protects it from wear and tear while the included carry bag makes transportation a breeze.

FULL COLOR

5 YEAR WARRANTY

SINGLE OR DOUBLE SIDED

AVAILABLE IN SIZE

**33" x 80"**



**Heavy Duty Aluminum Stand**

5 Year Hardware Warranty  
(Against Manufacturer Defect)

**Gray Back Vinyl**

6 Month Graphic Warranty  
(Against Manufacturer Defect)

**Polysatin Fabric Print**

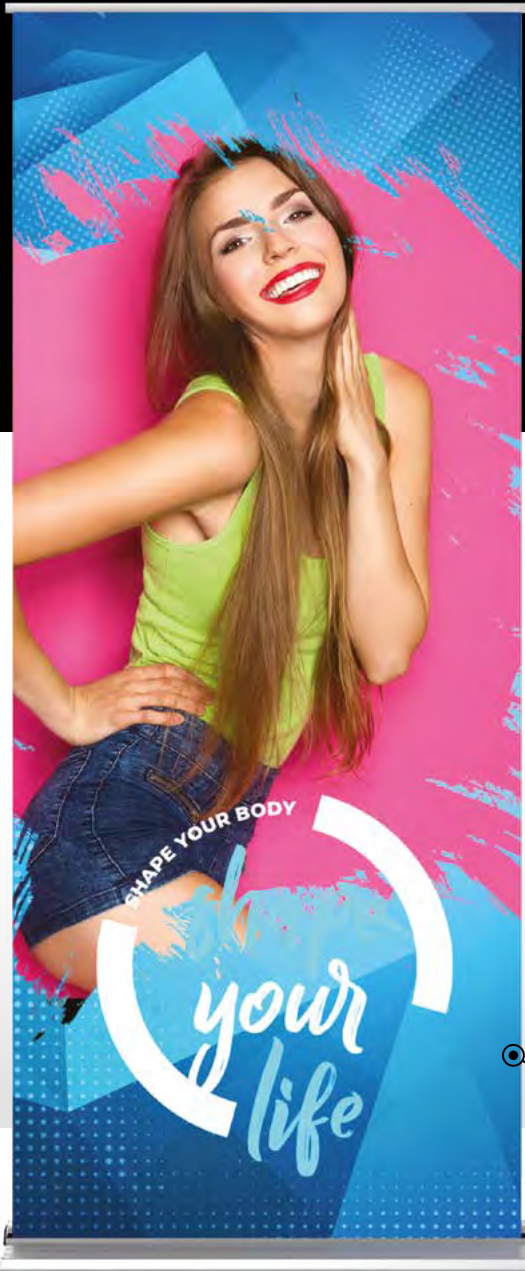
6 Month Graphic Warranty  
(Against Manufacturer Defect)

#### WHAT'S INCLUDED?

- Installed Graphic
- Stand & Top Clamp
- 3 Piece Support Pole
- Padded Carry Bag
- Setup Instructions

**Chrome Plate**

**Printed With Fade Resistant Inks**



# PREMIER

SKU # RBS - PREM

Our Premier Retractable Banner Stands are great for trade shows, expositions and other promotional events. The graphics are 80" high and will surely capture the attention of potential customers. This display stand has a roll up feature helping protect your banner from wear and tear while the included carry bag makes transportation breeze.

FULL COLOR

LIMITED LIFETIME WARRANTY

SINGLE SIDED

AVAILABLE IN SIZES

24" / 36" / 48" / 60" x 80"

**Gray Back Vinyl**  
6 Month Graphic Warranty  
(Against Manufacturer Defect)

**Polysatin Fabric Print**  
6 Month Graphic Warranty  
(Against Manufacturer Defect)

#### WHAT'S INCLUDED?

- Installed Graphic
- Stand & Top Clamp
- Adjustable Support Pole
- Heavy Duty Carry Bag
- Setup Instructions

**Printed With Fade Resistant Inks**



**Heavy Duty Aluminum Stand**  
Limited Lifetime Warranty  
(Against Manufacturer Defect)

**Chrome Plate**



# OUTDOOR

SKU # RBS - OUTDOOR

Our Outdoor Retractable Banner Stands are great for trade shows, expositions and any outdoor event. The weather resistant stand has room for two banners, making double sided advertising quick and easy. This stand also has an automatic retracting feature that protects it from wear and tear while the included carry bag makes transportation a breeze.

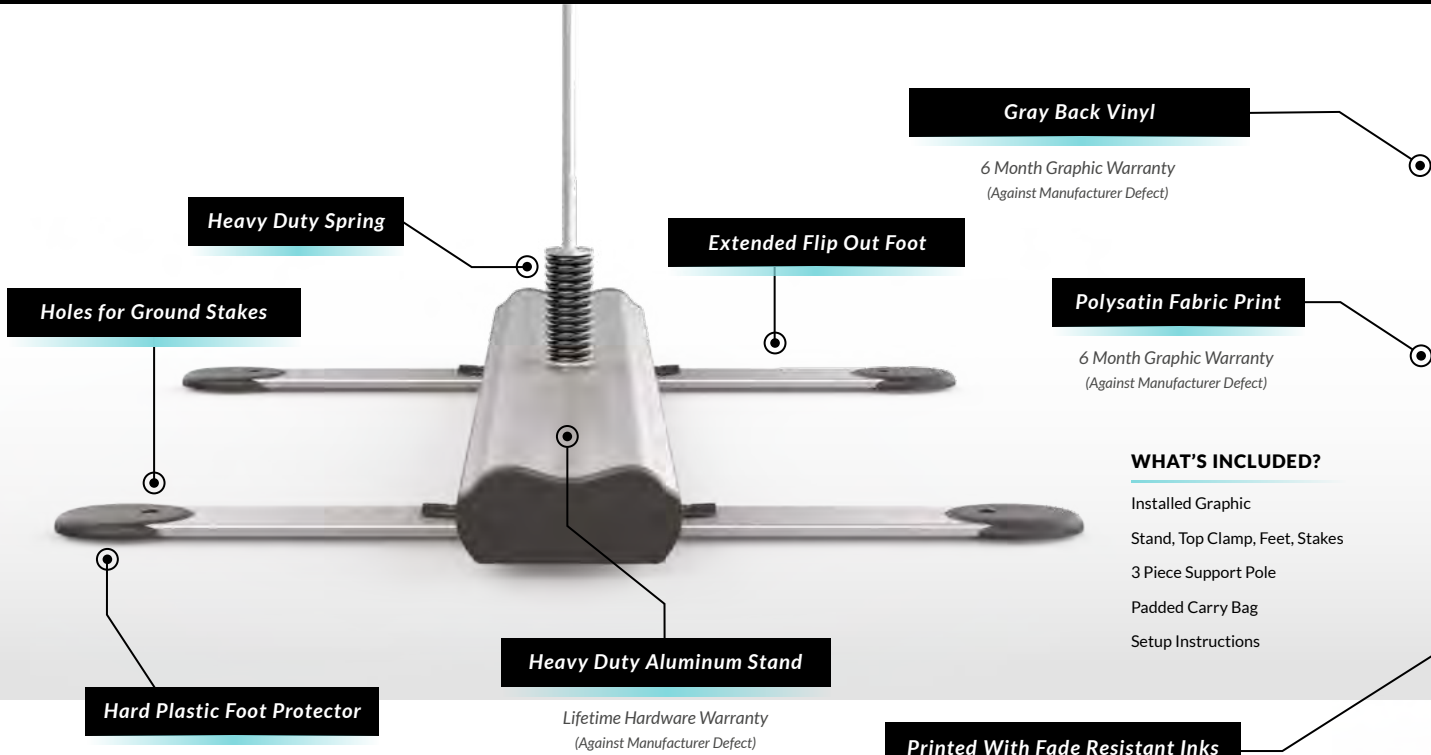
FULL COLOR

LIFETIME WARRANTY

DOUBLE SIDED

AVAILABLE IN SIZE

33" x 80"



BANNER  
**STANDS**



SKU # ABS - F

# ADJUSTABLE BANNER STAND

The Adjustable Banner Stand is a great way to showcase a vibrant backdrop image. With an easy to set up pole system, you have an eye-catching display in minutes! Perfect for step and repeat designs or large colorful graphics.

DYE SUBLIMATED PRINT

STRETCH POLYESTER FABRIC

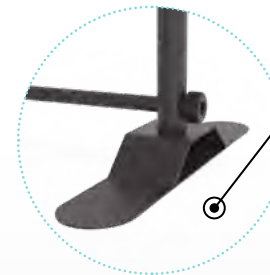
1 YEAR WARRANTY

AVAILABLE IN SIZES 8' x 8' / 10' x 8'



## WHAT'S INCLUDED?

- Graphic
- Adjustable Frame
- Nylon Carry Bag
- Setup Instructions



Heavy Duty Feet



Telescopic Pole

Printed With Fade Resistant Inks

Stretch Polyester

6 Month Graphic Warranty  
(Against Manufacturer Defect)



# ECONOMY X-BANNER

SKU # XBS - ECON

Our Economy X-Banner Stand provides the ultimate in portability and cost effectiveness. Weighing only 3.9 lbs and printed in high resolution on Gray Back Vinyl, this stand will steal the show at your next event or as a point of purchase display at your place of business.

AVAILABLE IN SIZE **24" x 64"**

FULL DIGITAL PRINT

INDOOR USE

6 MONTH WARRANTY



**Economy Frame**

**Gray Back Vinyl**

6 Month Graphic Warranty  
(Against Manufacturer Defect)

**Printed With Fade Resistant Inks**

## WHAT'S INCLUDED?

- Graphic
- X-Banner Hardware
- Nylon Carry Bag
- Setup Instructions



# PREMIER X-BANNER

SKU # XBS - PREM

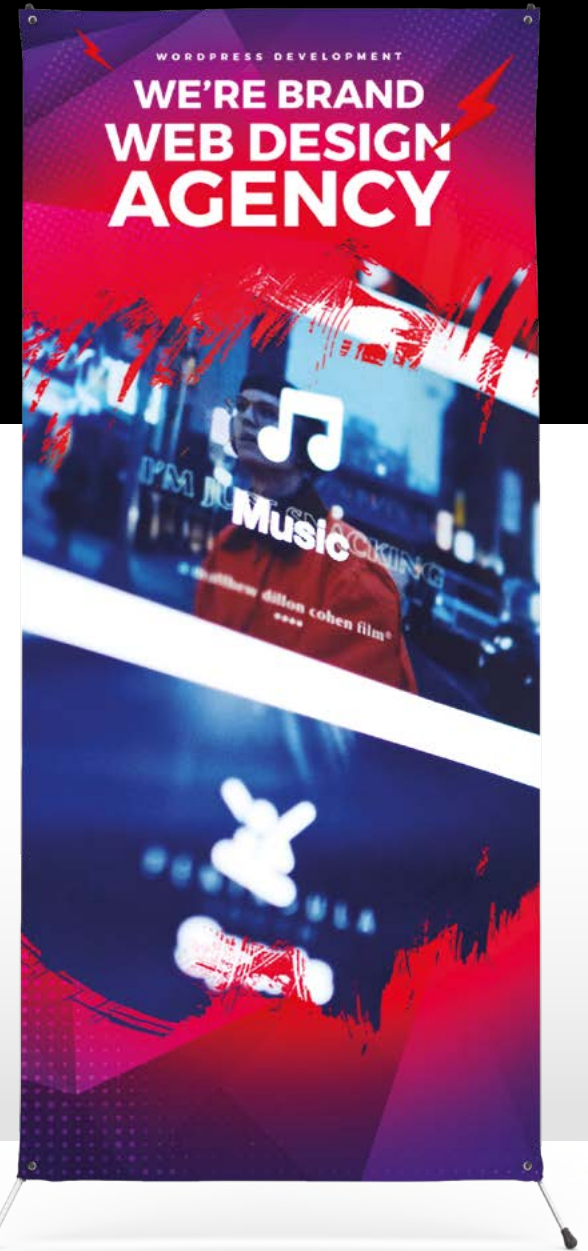
The Premier X-Banner Stand offers an amazing graphic on a solid stand. Printed in high resolution on Gray Back Vinyl, this portable stand will steal the show at your next event or as a point of purchase display at your place of business.

AVAILABLE IN SIZES **24" x 64" / 32" x 71"**

FULL DIGITAL PRINT

INDOOR USE

6 MONTH WARRANTY



## Professional Grade Frame

1 Year Hardware Warranty  
(Against Manufacturer Defect)

## Gray Back Vinyl

6 Month Graphic Warranty  
(Against Manufacturer Defect)

## Printed With Fade Resistant Inks

### WHAT'S INCLUDED?

- Graphic
- X-Banner Hardware
- Nylon Carry Bag
- Setup Instructions



# PREMIER TRI-STAND

SKU # PREM - TRI

Constructed with a sturdy aluminum pole system and three-footed base, the Premier Tri-Stand is the perfect point of purchase display. With vibrant interchangeable graphics, this stand can be used for a variety of marketing campaigns and events.

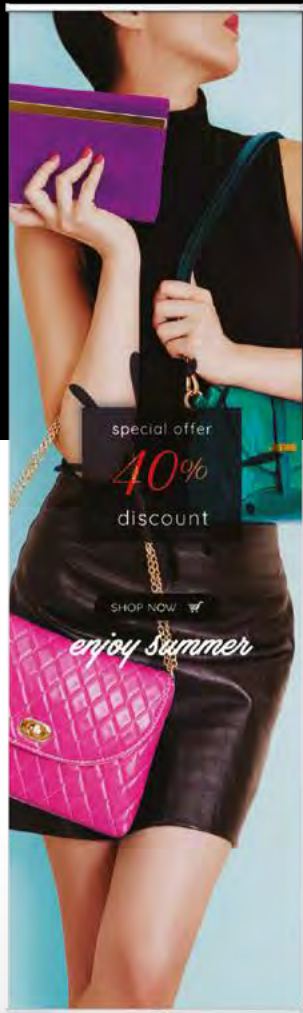
AVAILABLE IN SIZES **23.5" x 36"**  
**23.5" x 60"**  
**23.5" x 80"**

FULL DIGITAL PRINT

INDOOR USE

6 MONTH WARRANTY

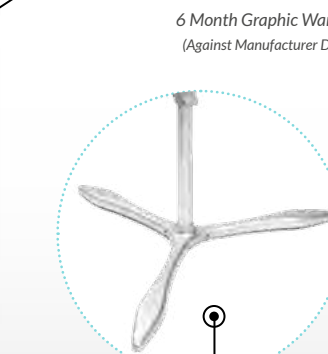
SINGLE OR DOUBLE SIDED



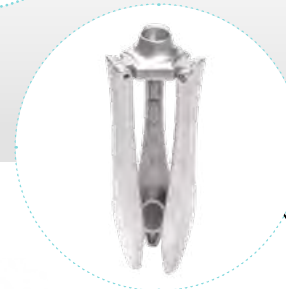
Top Clamps

Gray Back Vinyl

6 Month Graphic Warranty  
(Against Manufacturer Defect)



Base



Foldable Feet

SKU # PREM - CLA

# CLASSIC BANNER STAND

AVAILABLE IN SIZE **24" x 36" / 24" x 60" / 24" x 72"**

The Classic Banner Stand is a great display for any event. The square base provides a clean aesthetic and supports an amazing graphic available in a variety of sizes.

FULL DIGITAL PRINT

INDOOR USE

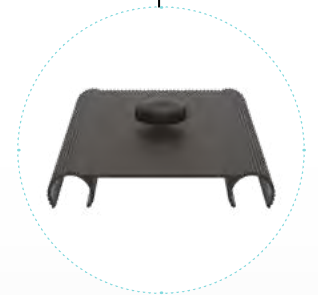
6 MONTH WARRANTY



Gray Back Vinyl

6 Month Graphic Warranty  
(Against Manufacturer Defect)

Top clamp supports poles and Rigid Substrate



Square Steel Base

Adjustable Pole



SKU # ETBS

# ECONOMY TUBE BANNER STAND

AVAILABLE IN SIZE 24" / 36" / 48" / 60" W x 90" H

DYE SUBLIMATED PRINT

INDOOR USE

6 MONTH WARRANTY



The Economy Tube Banner Stand comes with the same amazing graphics as our Premier Tube Stands, but with a square shaped top and 25mm thick tubes. This banner stand does not compromise on stability and will look amazing at your next show or event.

Stretch Polyester

6 Month Graphic Warranty  
(Against Manufacturer Defect)



Push Button Connection



Bottom Zipper

SKU # PTBS

# PREMIER TUBE STAND

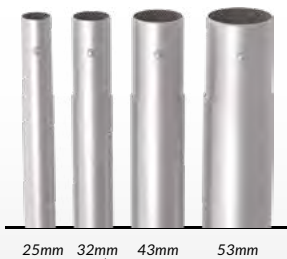
DYE SUBLIMATED PRINT

AVAILABLE IN SIZE 24" / 36" / 48" / 60" W x 90" H

INDOOR USE

1 YEAR WARRANTY

Our Premier Tube Stands offer outstanding, high resolution print quality on a Stretch Polyester Fabric and an easy to assemble interlocking frame. Once the frame is assembled, simply slide the pillowcase graphic over the frame, zip the graphic closed and your display is ready to use.



Stretch Polyester

6 Month Graphic Warranty  
(Against Manufacturer Defect)

Push Button Connection



Bottom Zipper



SKU # ETBS

# MAGNETIC TUBE BANNER STAND

AVAILABLE IN SIZE **24" / 36" / 48" / 60" W x 90" H**

The Economy Tube Banner Stand comes with the same amazing graphics as our Premier Tube Stands, but with a square shaped top and 25mm thick tubes. This banner stand does not compromise on stability and will look amazing at your next show or event.

DYE SUBLIMATED PRINT

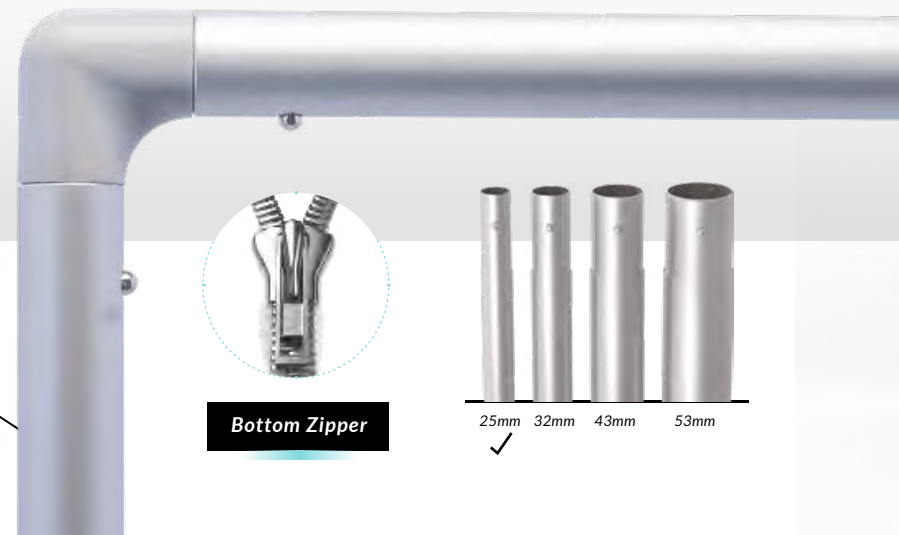
STRETCH POLYESTER FABRIC

1 YEAR WARRANTY

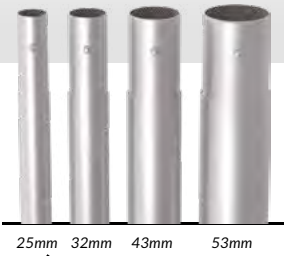


MAGNETIC PANELS

Tube Hardware



Bottom Zipper





SKU # RBS - PTBS - BL

# PREMIER BACKLIT TUBE STAND

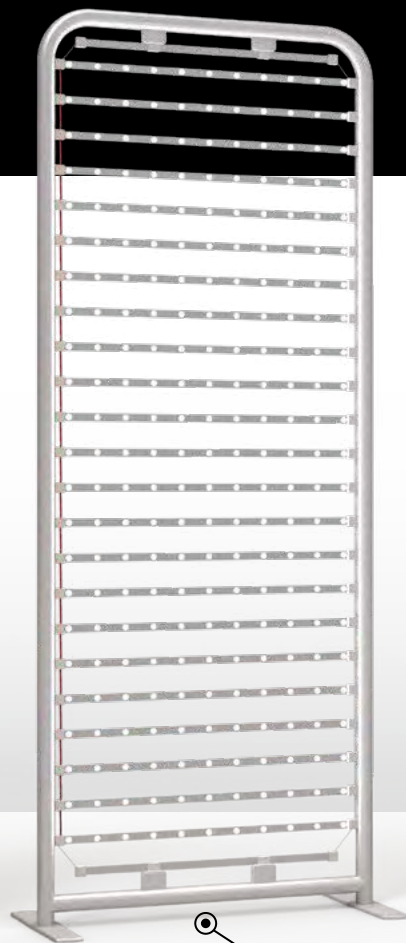
Light up your display with a Premier Tube Backlit Stand. With heavy duty Aluminum Tubes, and internal LED lights, this display is sure to draw attention at your next event.

AVAILABLE IN SIZES  
36" W x 90" H

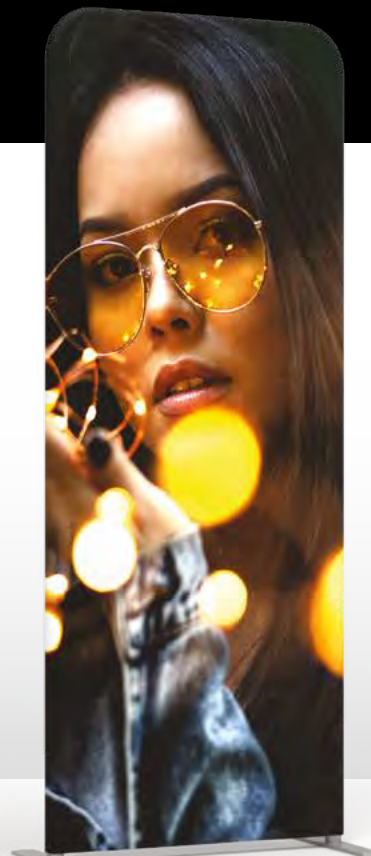
DYE SUBLIMATED PRINT

INDOOR USE

1 YEAR WARRANTY

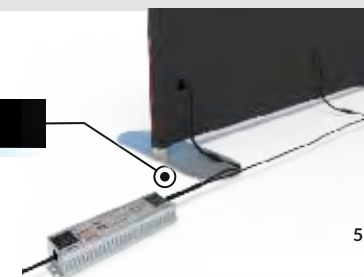


Hardware with LED Lights



Bottom Zipper

External Power Supply





SKU # RBS - PTBS - BL

# SEG BANNER STAND

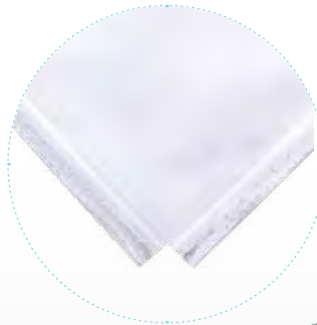
Our SEG Banner Stands offer outstanding, high resolution print quality on a Stretch Polyester Fabric and an easy to assemble frame. Once the frame is assembled, the graphic is easily inserted into the front of the frame. The graphic's silicon edges hold the graphic in place.

AVAILABLE IN SIZES  
**33" W x 80" H**  
CUSTOM SIZE AVAILABLE

DYE SUBLIMATED PRINT

SEG POLYESTER FABRIC

1 YEAR WARRANTY



Silicon Edge Graphic





SKU # RBS - PTBS - BL

# SEG LIGHTBOX BANNER STAND

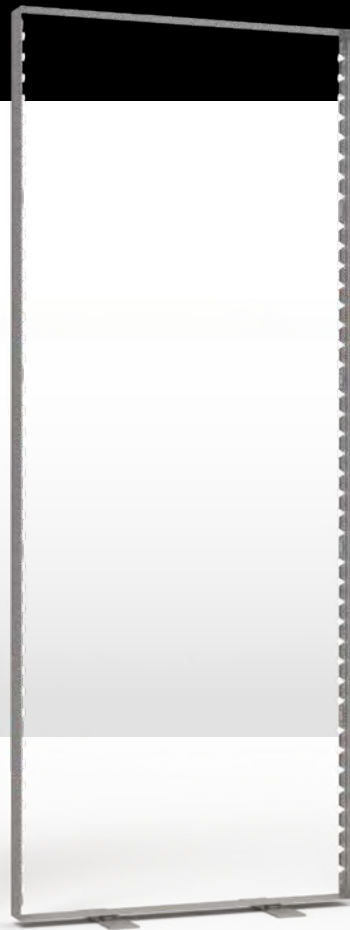
*Our SEG Lightbox Banner Stands offer outstanding, high resolution print quality on a Stretch Polyester Fabric and an easy to assemble frame with built in LED lights. Once the frame is assembled, the graphic is easily inserted into the front of the frame. The graphic's silicon edges hold the graphic in place. Simply plug in the lights and watch your graphic come to life.*

**AVAILABLE IN SIZES**  
**33" W x 80" H**  
**CUSTOM SIZE AVAILABLE**

DYE SUBLIMATED PRINT

SEG POLYESTER FABRIC

1 YEAR WARRANTY



TUBE &  
POP-UP  
**DISPLAYS**

SKU # PT - BL

# TUBE BACKLIT DISPLAY

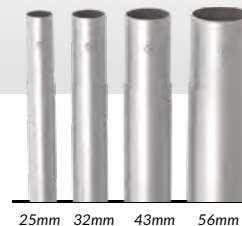
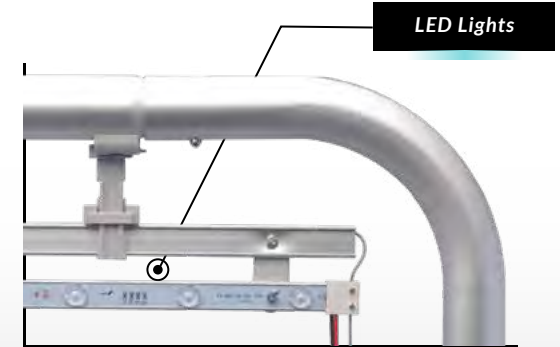
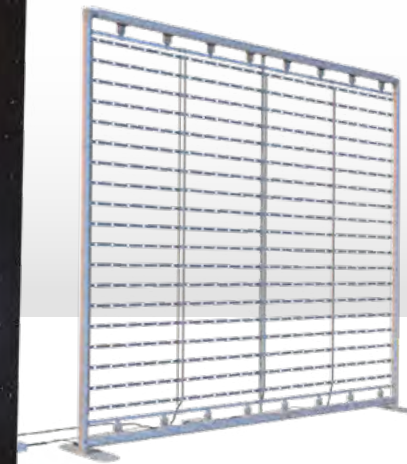
Light up your display with a Premier Tube Backlit Display. With heavy duty Aluminum Tubes, and internal LED lights, this display is sure to draw attention at your next event. Easy to assemble snap together tubes makes this impressive display quick and easy to set-up while creating an impactful branding tool to showcase your brand.

DYE SUBLIMATED PRINT

STRETCH POLYESTER FABRIC

AVAILABLE IN SIZES

8' / 10' x 7.5'



Bottom Zipper

LED Lights Built into Frame

Stretch Fit Polyester

6 Month Graphic Warranty  
(Against Manufacturer Defect)



SKU # PT - S

# PREMIER TUBE DISPLAY

Our Premier Tube Displays offer outstanding, high resolution print quality and an easy to assemble interlocking frame. Once the frame is assembled, simply slide the pillowcase graphic over the frame, zip the graphic closed and your display is ready to use.

DYE SUBLIMATED PRINT

STRETCH POLYESTER FABRIC

MACHINE WASHABLE

AVAILABLE IN SIZE

8' / 10' / 20' / 30' W x 7.5' H

7.5 FT

30 FT

20 FT

10 FT

8 FT

Push Button Connection

Bottom Zipper

25mm 32mm 43mm 56mm

Stretch Fit Polyester Fabric

6 Month Graphic Warranty  
(Against Manufacturer Defect)

YOUR BRAND  
ALL EXCLUSIVES  
SAVE UP TO 50% OFF



SKU # PT - S - XL

# PREMIER TUBE XL DISPLAY

Our Extra Large Premier Tube Displays offer outstanding, high resolution print quality and an easy to assemble interlocking frame with even more space to advertise. Once the frame is assembled, simply slide the pillowcase graphic over the frame, zip the graphic closed and your display is ready to use.

AVAILABLE IN SIZE  
10' / 20' / 30' W x 10' H

DYE SUBLIMATED PRINT  
STRETCH POLYESTER FABRIC  
MACHINE WASHABLE



SKU # PPU - C

# POP-UP CURVED DISPLAY

Our Pop-Up Curved Displays offer outstanding, high resolution print quality and an easy to assemble frame. The curved hardware creates a unique shape that's sure to draw attention to your trade show display. Simply expand the frame, snap the frame into the locked position, install your graphic and your display is ready to use.

AVAILABLE IN SIZE

8' / 10'

DYE SUBLIMATED PRINT

STRETCH POLYESTER FABRIC

MACHINE WASHABLE



SKU # PT - C

# TUBE CURVED DISPLAY

Our Premier Tube Curved Displays offer outstanding, high resolution print quality and an easy to assemble interlocking frame. The curved hardware offers a unique shape to advertise on. Once the frame is assembled, simply slide the pillowcase graphic over the frame, zip the graphic closed and your display is ready to use.

AVAILABLE IN SIZE

8' / 10'

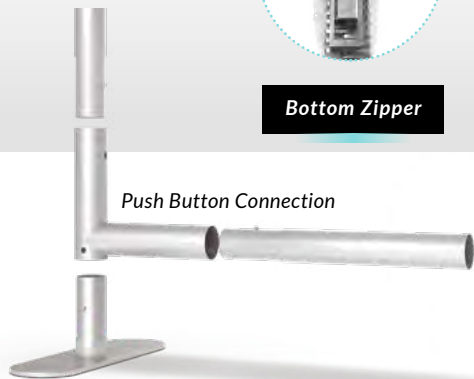
DYE SUBLIMATED PRINT

STRETCH POLYESTER FABRIC

MACHINE WASHABLE



Bottom Zipper





SKU # PPU - S

# POP-UP DISPLAY

## AVAILABLE IN SIZE

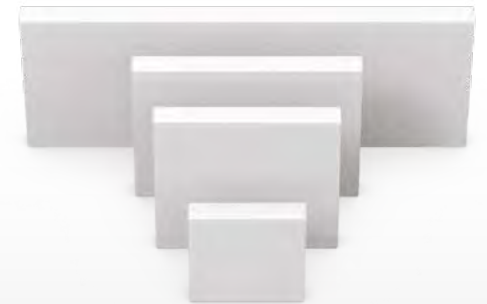
- 8' x 7.5'
- 10' x 7.5'
- 20' x 7.5'

DYE SUBLIMATED PRINT

STRETCH POLYESTER FABRIC

2" VELCRO SEWN

*Our Premier Pop-Up Displays offer outstanding, high resolution print quality and an easy to assemble frame. Simply expand the frame, snap the frame into the locked position, install your graphic and your display is ready to use.*



**Professional Grade Frame**

Limited Lifetime Warranty  
(Against Manufacturer Defect)

**Stretch Polyester Fabric**

6 Month Warranty  
(Against Manufacturer Defect)



SKU # PPU - S - XL

# POP-UP DISPLAY-XL

Our Extra Large Premier Pop-Up Displays offer outstanding, high resolution print quality and an easy to assemble frame with even more space to advertise on. Simply expand the frame, snap the frame into the locked position, install your graphic and your display is ready to use.

AVAILABLE IN SIZE  
10' x 10' / 20' x 10'

DYE SUBLIMATED PRINT

1 YEAR WARRANTY

STRETCH POLYESTER FABRIC

2" VELCRO SEWN



# TRADESHOW DISPLAYS

SKU # HANG-SQUA  
HANG-CIRC

# PREMIER HANGING BANNER

If you want to maximize your exposure at your next tradeshow event then the Premier Hanging Banner is a must! Ranging from 5 ft to 20 ft in diameter, this hanging banner is sure to attract attention and draw clients to your booth. Composed of stretch polyester fabric and a dye sublimated print, this vivid display will maximize your brand awareness and allow you to be seen from across the exhibit hall.

DYE SUBLIMATED PRINT

RANGING 5 FT to 20 FT

STRETCH POLYESTER FABRIC

WASHABLE FABRIC



## Square Hanging Banner

AVAILABLE IN SIZES

8' x 3.5' / 16' x 4' / 20' x 4'  
CUSTOM SIZES ALSO AVAILABLE



## Circle Hanging Banner

AVAILABLE IN SIZES

10' x 2' / 15' x 5' / 20' x 4'  
CUSTOM SIZES ALSO AVAILABLE

SKU # HANG-TRIA  
HANG-FOOT

# PREMIER HANGING BANNER

If you want to maximize your exposure at your next tradeshow event then the Premier Hanging Banner is a must! Ranging from 5 ft to 20 ft in diameter, this hanging banner is sure to attract attention and draw clients to your booth. Composed of stretch polyester fabric and a dye sublimated print, this vivid display will maximize your brand awareness and allow you to be seen from across the exhibit hall.

DYE SUBLIMATED PRINT

RANGING 5 FT to 20 FT

STRETCH POLYESTER FABRIC

WASHABLE FABRIC



## Triangle Hanging Banner

AVAILABLE IN SIZES

**10' x 3.5' / 14' x 3.5' / 20' x 3.5'**

CUSTOM SIZES ALSO AVAILABLE



## Football Hanging Banner

AVAILABLE IN SIZES

**8' x 2.75' x 3.5' / 10' x 2.75' x 3.5' / 12' x 2.75' x 3.5'**

CUSTOM SIZES ALSO AVAILABLE



SKU # HANG-PINW  
HANG-CUBE

# PREMIER HANGING BANNER

If you want to maximize your exposure at your next tradeshow event then the Premier Hanging Banner is a must! Ranging from 5 ft to 20 ft in diameter, this hanging banner is sure to attract attention and draw clients to your booth. Composed of stretch polyester fabric and a dye sublimated print, this vivid display will maximize your brand awareness and allow you to be seen from across the exhibit hall.

DYE SUBLIMATED PRINT

RANGING 5 FT to 20 FT

STRETCH POLYESTER FABRIC

WASHABLE FABRIC



**Pinwheel** Hanging Banner

AVAILABLE IN SIZES

**10' x 3' / 14' x 5' / 16' x 5'**

CUSTOM SIZES ALSO AVAILABLE



**Cube** Hanging Banner

AVAILABLE IN SIZES

**10' x 2' / 15' x 5' / 20' x 4'**

CUSTOM SIZES ALSO AVAILABLE

SKU # ARCH - SQ

# PREMIER SQUARE ARCH

DYE SUBLIMATED PRINT

STRETCH POLYESTER FABRIC

MACHINE WASHABLE



AVAILABLE IN SIZE

8' x 8'

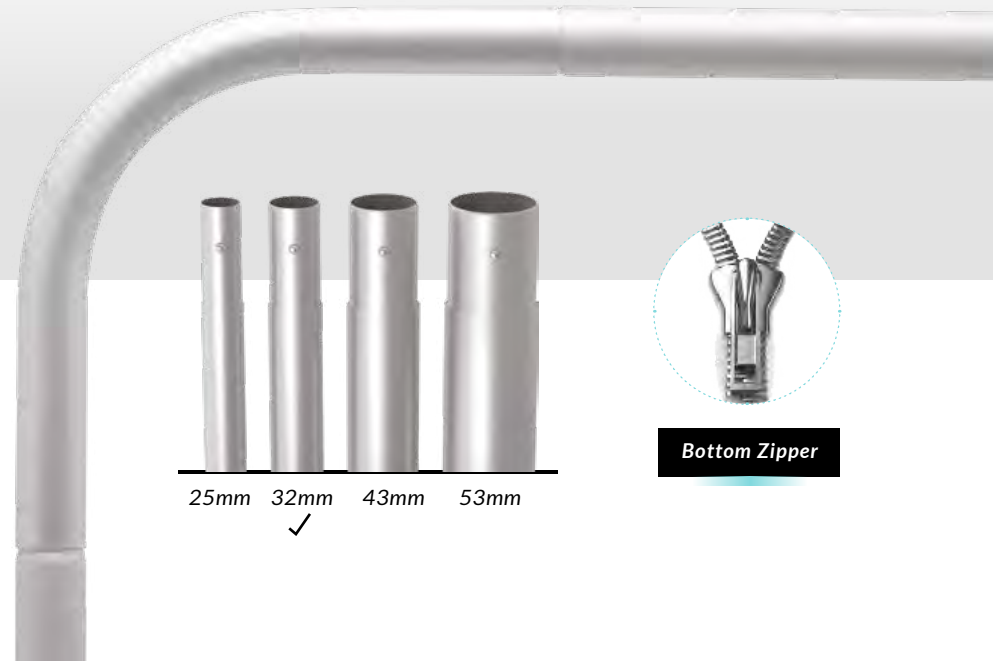
Stretch Polyester Fabric

6 Month Graphic Warranty  
(Against Manufacturer Defect)

Our Premier Square Arch adds a stunning design element to any trade show booth or display. Enhance your presence with this easy to install arch with vibrant graphics printed on Stretch Polyester Fabric.

Professional Grade Frame

Limited Lifetime Warranty  
(Against Manufacturer Defect)



25mm 32mm 43mm 53mm

Bottom Zipper

SKU # PT - CS

# PREMIER COLUMN STAND

Transform your booth into a three-dimensional display with our Premier Column Stand. This rectangular display stands 79 inches tall and with easy to install hardware and vibrant graphics, it is sure to draw attention to your trade show booth or event.

AVAILABLE IN SIZE

19.5" x 27.5" x 78.75"

31.5" x 31.5" x 118"



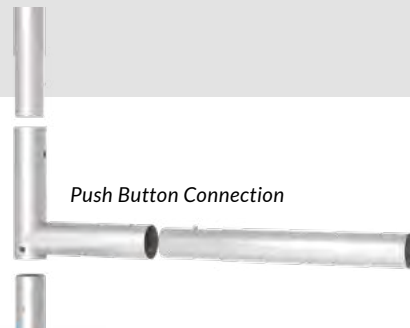
25mm 32mm 43mm 53mm



Bottom Zipper

Stretch Polyester Fabric

6 Month Graphic Warranty  
(Against Manufacturer Defect)



Push Button Connection



SKU # ARCH - SA

# PREMIER SINGULAR ARCH

DYE SUBLIMATED PRINT

STRETCH POLYESTER FABRIC

MACHINE WASHABLE

AVAILABLE IN SIZE

9' x 7.5'



Our Premier Singular Arch adds a stunning design element to any trade show booth or display. Enhance your presence with this easy to install arch with vibrant graphics printed on stretch polyester fabric.



Bottom Zipper

Professional Grade Frame

Limited Lifetime Warranty  
(Against Manufacturer Defect)



SKU # ARCH - RND

# PREMIER ROUNDED ARCH

DYE SUBLIMATED PRINT

STRETCH POLYESTER FABRIC

MACHINE WASHABLE

AVAILABLE IN SIZE  
19.5' x 13'



Our Premier Rounded Arch adds a stunning design element to any trade show booth or display. Enhance your presence with this easy to install arch with vibrant graphics printed on stretch polyester fabric.



Bottom Zipper

Professional Grade Frame

Limited Lifetime Warranty  
(Against Manufacturer Defect)

SKU # ARCH - AC

# ARCH ACCESSORY

AVAILABLE IN SIZE  
30" W x 7.5' / 10' H x 8'

DYE SUBLIMATED PRINT

STRETCH POLYESTER FABRIC

MACHINE WASHABLE



The Premier Arch Accessory is an ideal dimensional accessory to your Premier Tube Display. Sizing options are available for your 7.5ft or 10ft display. Add shelving or a TV mount to the front of our Arch for increased functionality at your next show or event.



25mm 32mm 43mm 53mm



Bottom Zipper

Professional Grade Frame

Limited Lifetime Warranty  
(Against Manufacturer Defect)

SKU # PT - OVD

# OVERLAP DISPLAY

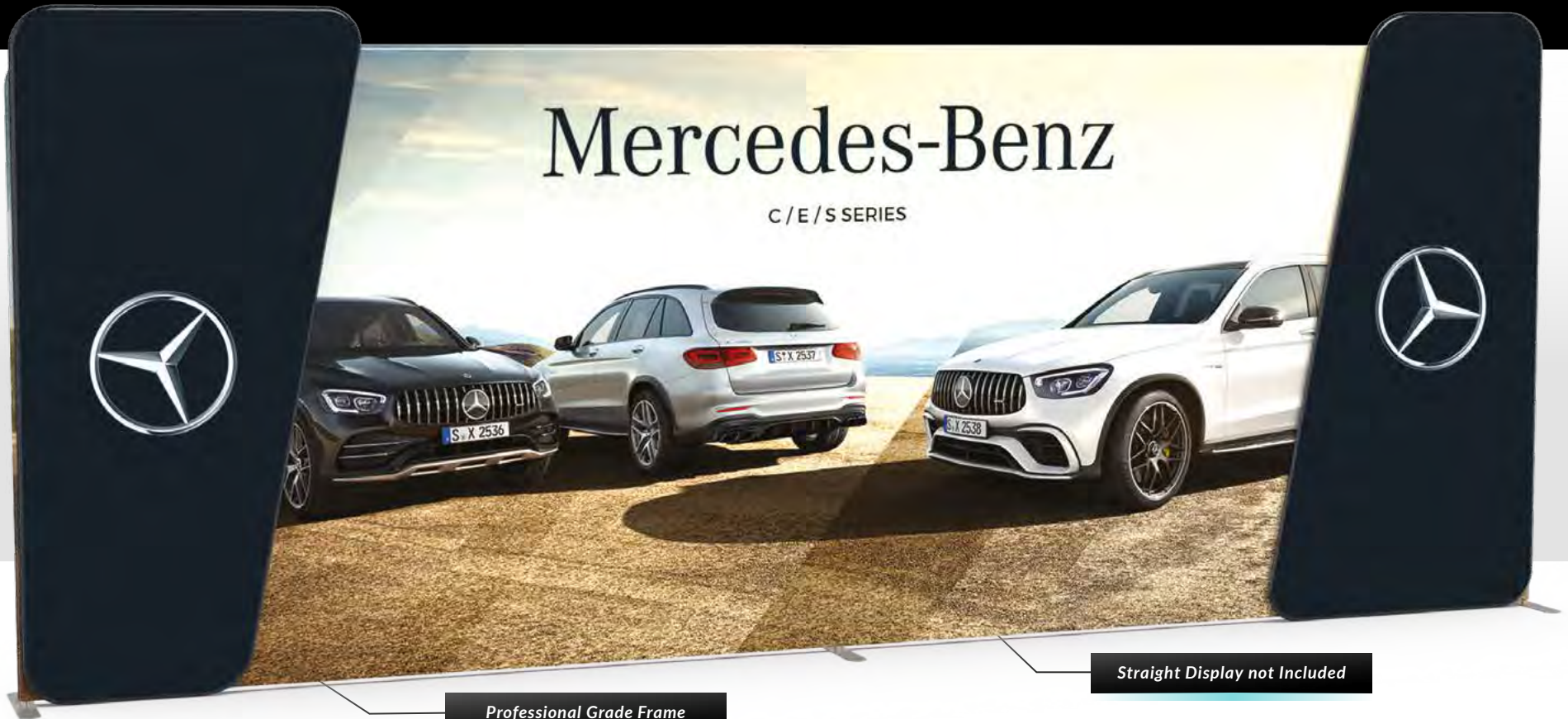
Add dimensions to your booth with our Premier Tube Overlap Display Series. With tool free connectors, and easy to assemble hardware, you can transform your straight display to a three-dimensional booth experience in minutes.

AVAILABLE IN SIZE  
**2.5' x 7.5' / 10'**

DYE SUBLIMATED PRINT

STRETCH POLYESTER FABRIC

MACHINE WASHABLE



Professional Grade Frame

Straight Display not Included

Limited Lifetime Warranty  
(Against Manufacturer Defect)



SKU # PPU - COUNTER

# PREMIER COUNTERS

Our Stretch Fabric Counters are a perfect promotional tool to add style and valuable space for product placement. Enhance your booth or event space with our Premier Counter Display.

AVAILABLE IN SIZE

**Custom Sizing**

DYE SUBLIMATED PRINT

FULL DIGITAL PRINT

STRETCH POLYESTER FABRIC



## Premier SEG Counter

Our counter series use poles to support the top and bottom panel to form a frame. The structure makes it very easy to assemble; less than 5 minutes with no tools needed. Once the frame is wrapped with the graphic, it becomes a very stylish, waist-high counter display.



## Premier Pop-up Counter

Our counter series use poles to support the top and bottom panel to form a frame. The structure makes it very easy to assemble; less than 5 minutes with no tools needed. Once the frame is wrapped with the graphic, it becomes a very stylish, waist-high counter display.



TRADESHOW  
BOOTH  
**SOLUTIONS**

SKU # BOOTH - 8

# 8 FT BOOTH OPTIONS

Enhance your next trade show space with our 8ft Standard Booth Solution. There are hundreds of variations available, no size too large or small. Our 8ft Booth comes with an 8ft Premier Tube Display, 8ft Arch with shelf rack and TV mount and a Pop-up Counter Display. Feel free to swap out any product you'd like. The possibilities are endless.

AVAILABLE IN SIZE

8'

DYE SUBLIMATED PRINT

STRETCH POLYESTER FABRIC

MACHINE WASHABLE

Booth 1



Booth 2



Booth 3



Booth 4



Booth 5



Booth 6



Booth 7



Booth 8



Booth 9



Booth 10



Booth 11



SKU # BOOTH - 10

# 10 FT BOOTH OPTIONS

Enhance your next trade show space with our 10ft Standard Booth Solution. There are hundreds of variations available, no size too large or small. Our 10ft Booth comes with a 10ft Premier Tube Display, 10ft Arch with shelf rack and TV mount and a Pop-up Counter Display. Feel free to swap out any product you'd like. The possibilities are endless.

AVAILABLE IN SIZE  
10'

DYE SUBLIMATED PRINT  
STRETCH POLYESTER FABRIC  
MACHINE WASHABLE

Booth 1



Booth 2





Booth 3



Booth 4



Booth 5



Booth 6



Booth 7



Booth 8



Booth 9



Booth 10



Booth 11



SKU # BOOTH - 20

# 20 FT BOOTH OPTIONS

Enhance your next trade show space with our 20ft Standard Booth Solution. There are hundreds of variations available, no size too large or small. Our 20ft Booth can include a 20ft Premier Tube Display, 20ft Arch with shelf rack and TV mount and a Pop-up Counter Display. Feel free to swap out any product you'd like. The possibilities are endless.

AVAILABLE IN SIZE

20'

DYE SUBLIMATED PRINT

STRETCH POLYESTER FABRIC

MACHINE WASHABLE





Booth 1



Booth 2



Booth 3



Booth 4



Booth 5



Booth 6



Booth 7



Booth 9



SKU # BOOTH - CSTM

# CUSTOM BOOTH SOLUTIONS

Enhance your next trade show space with our Custom Booth Solution. There are hundreds of variations available, no size too large or small. Feel free to swap out any product you'd like. The possibilities are endless.





# ISLAND BOOTH SOLUTIONS



TRADESHOW  
BOOTH  
**COMPONENTS**

# “A/B/C/D SERIES” COMPONENTS

Enhance your next trade show space with our 30ft Standard Booth Solution. There are hundreds of variations available, no size too large or small. Our 30ft Booth comes with a 30ft Premier Tube Display, 30ft Arch with shelf rack and TV mount and a Pop-up Counter Display. Feel free to swap out any product you'd like. The possibilities are endless.

## A SERIES



**A1** 3.5' x 7.5'

**A2** 3.5' x 8'

**A3** 3.5' x 10'

## B SERIES



**B1** 5' x 7.5'

**B2** 5' x 8'

**B3** 5' x 10'

## C SERIES



**C1** 6' x 7.5'

**C2** 6' x 8'

**C3** 6' x 10'

## D SERIES



**D1** 8' x 7.5'

**D2** 8' x 8'

**D3** 8' x 10'

# “E SERIES” COMPONENTS

Enhance your next trade show space with our 30ft Standard Booth Solution. There are hundreds of variations available, no size too large or small. Our 30ft Booth comes with a 30ft Premier Tube Display, 30ft Arch with shelf rack and TV mount and a Pop-up Counter Display. Feel free to swap out any product you'd like. The possibilities are endless.

DYE SUBLIMATED PRINT

STRETCH POLYESTER FABRIC

MACHINE WASHABLE



**E1** 3.5' x 7.5'/8'



**E2** 5' x 7.5'/8'



**E3** 6' x 7.5'/8'



**E4** 8' x 7.5'/8'



# “F SERIES” COMPONENTS

Enhance your next trade show space with our 30ft Standard Booth Solution. There are hundreds of variations available, no size too large or small. Our 30ft Booth comes with a 30ft Premier Tube Display, 30ft Arch with shelf rack and TV mount and a Pop-up Counter Display. Feel free to swap out any product you'd like. The possibilities are endless.

DYE SUBLIMATED PRINT

STRETCH POLYESTER FABRIC

MACHINE WASHABLE



**F1** 3.5' x 7.5'/8'

**F2** 5' x 7.5'/8'

**F3** 6' x 7.5'/8'

**F4** 8' x 7.5'/8'

# “G SERIES” COMPONENTS

Enhance your next trade show space with our 30ft Standard Booth Solution. There are hundreds of variations available, no size too large or small. Our 30ft Booth comes with a 30ft Premier Tube Display, 30ft Arch with shelf rack and TV mount and a Pop-up Counter Display. Feel free to swap out any product you'd like. The possibilities are endless.

DYE SUBLIMATED PRINT

STRETCH POLYESTER FABRIC

MACHINE WASHABLE



**G1** 3.5' x 7.5'/8'

**G2** 5' x 7.5'/8'

OUTDOOR  
**PRODUCTS**

SKU # POB

# FABRIC POP-OUT BANNERS

Our professional grade Pop-Out Banners set the bar as the ultimate in customized displays. Increase brand awareness with these lightweight, portable fabric displays that are ideal for corporate and outdoor events.

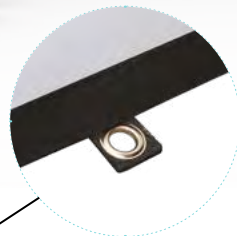
## AVAILABLE IN SIZES

Horizontal	Vertical
59" x 27.5"	28.5" x 34.5"
79" x 35.5"	35.5" x 45.5"
106.5" x 43.5"	43.5" x 75"

DYE SUBLIMATED PRINT

VERTICAL DISPLAY

HORIZONTAL DISPLAY



Grommet for ground stake





SKU # PT - A-FRAME

# TUBE A-FRAME

Our Premier Tube Outdoor A-Frame comes with stunning fabric graphics and an easy to assemble frame. This is a great addition to any outdoor event or sideline advertising at your next sporting event.

## AVAILABLE IN SIZES

39" x 39"

39" x 78"

39" x 118"

DYE SUBLIMATED PRINT

STRETCH POLYESTER FABRIC

MACHINE WASHABLE



Bottom Zipper

SKU # A-FRAME

# SELECT A-FRAMES

Our A-Frames are the perfect solution for driving traffic to your trade show booth or store front. This display works best when you're looking to swap out graphics for different events or promotions. No need to purchase another A-Frame, just replace the graphic with an updated one.

FULL DIGITAL PRINT

COROPLAST

AVAILABLE IN SIZE

24" x 36"

**Signicade** A-Frame



**Deluxe** A-Frame



**Premier** A-Frame



SKU # PT - BARRICADE

# OUTDOOR BARRICADE COVER

Our Custom Outdoor Barricades are a simple solution for crowd control and area segmentation. The frames are stable, quick to set up and offer easily replaceable graphics. Typically printed on vinyl, the material is naturally weather resistant and well-suited for any condition.

FULL DIGITAL PRINT

600 DENIER POLYESTER

13oz VINYL

AVAILABLE IN SIZE

**Custom Sizing**



Hardware not Included

SKU # DRCT - CHAIR

# DIRECTOR'S CHAIRS

Our Director's Chair is a lightweight chair that folds side-to-side for easy transportation and storage. The seat and back are made of heavy duty 600 Denier Polyester for ultimate stability. The back is also fully customizable to add your logo or text on both the front and back.

DYE SUBLIMATED PRINT

600 DENIER POLYESTER

SEAT BACK PRINT ONLY

AVAILABLE IN SIZE

Tall / Short



**Premier Chair**

Carry Bag Included



**Economy Chair**



SKU # UMB

# PREMIER UMBRELLAS

Showcase and provide shade, that's the goal with our Premier Umbrellas. Perfect for patio seating, outdoor events, trade shows and marketplaces.

DYE SUBLIMATED PRINT

SCREEN PRINT

600 DENIER POLYESTER

AVAILABLE IN SIZES

108"



Beach Umbrella



Golf Umbrella



Market  
Without Valances



Market  
With Valances

SKU # INFLATABLE

# INFLATABLE PRODUCTS

Make your brand stand out at your next event with one of our Inflatable Products. Our Inflatables come in a variety of shapes and sizes and are made of the most durable materials, designed for easy setup and deflation.

AVAILABLE IN SIZE  
**Custom Sizing**

DYE SUBLIMATED PRINT

INFLATABLE

CUSTOM SIZES AVAILABLE

SINGLE / DOUBLE SIDED







SKU # RGD

# RIGID MATERIALS

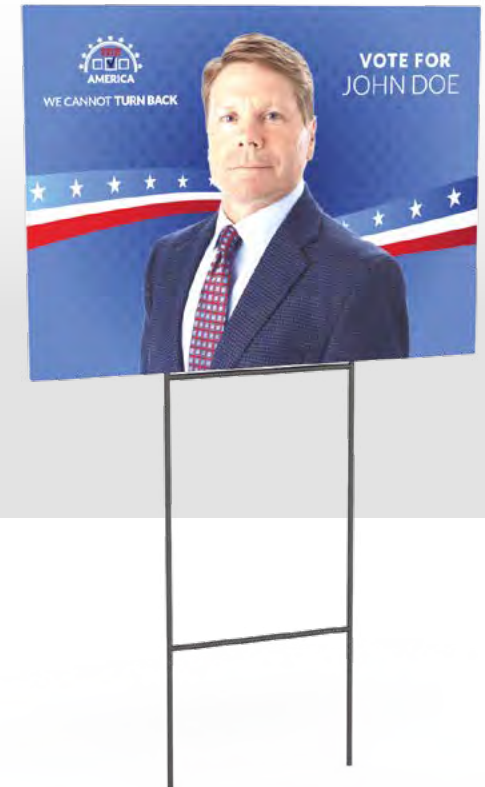
We offer a wide variety of rigid substrates to choose from. Whether it be yard signs for a campaign or store front signage, let us help create the perfect solution for your next project.

AVAILABLE IN SIZE  
**Custom Sizing**

FULL DIGITAL PRINT

CUSTOM DIE CUT

SINGLE / DOUBLE SIDED





# PLASTIC/PAPER SUBSTRATES

# METAL SUBSTRATES



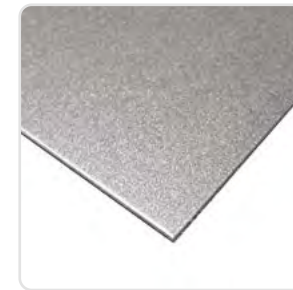
**COROPLAST**  
4MM, 6MM, 10MM



**PVC**  
3MM, 6MM, 12MM



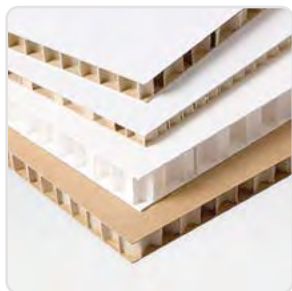
**FOAM CORE**  
1/8", 3/16", 1/2"



**ALUMINUM**  
1/8", 1/4", 1/2"



**ULTRA BOARD**  
3/16", 1/2", 3/4", 1"



**EAGLECELL**  
1/4", 1/2"



**POLYSTYRENE**  
0.020", 0.030", 0.060"



**DIBOND**  
2MM, 3MM, 4MM, 6MM, 8MM

SKU # ROLL ADHESIVE

# ROLL MATERIALS

We offer a wide variety of adhesive graphics to choose from. Whether it be window graphics for the exterior of your business or self-promotion stickers, let us help create the perfect solution for your next project.

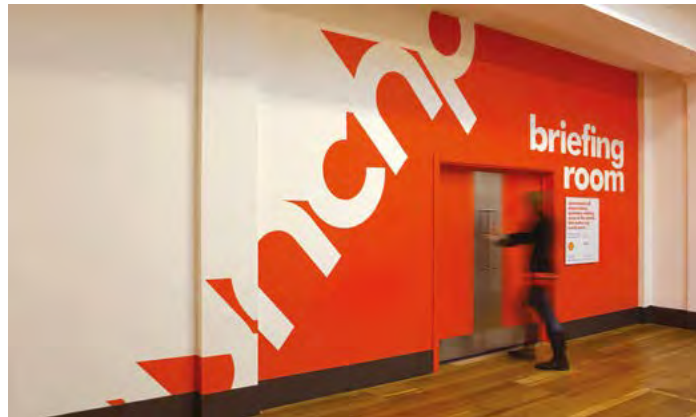
FULL DIGITAL PRINT

ADHESIVE

CUSTOM DIE CUT

AVAILABLE IN SIZE

**Custom Sizing**



# ADHESIVE MATERIALS

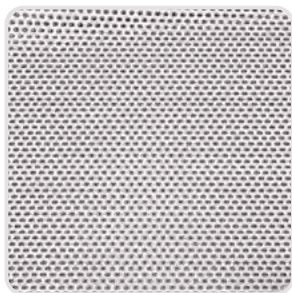


WALK & WALL **VINYL**



NO TEXTURE  
Flat Surface

LOW TACK **VINYL**



WINDOW PREF **70/30**



PHOTOTEX

# NON-ADHESIVE MATERIALS



.03" **MAGNET**

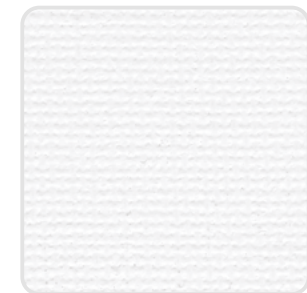


FOAM **PAPER**



NO TEXTURE  
Flat Surface

POSTER **PAPER**



CANVAS **PAPER**



SKU # BAN

# CUSTOM BANNERS

Full color banners are printed in high resolution on your choice of durable vinyl or fabric. All banners can have grommets added at no additional cost allowing you to hang your banner with ease. Increase the life of your banner by having the edges hemmed and gloss coated.

AVAILABLE IN SIZE  
**Custom Sizing**

FADE RESISTANT INK

FULL DIGITAL PRINT

HEMMED EDGES

GROMMETS



Grommets



# VINYL MATERIALS



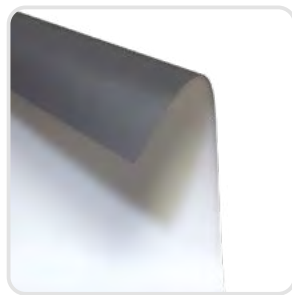
18 OZ **BLOCK OUT VINYL**



13 OZ **SCRIM VINYL**

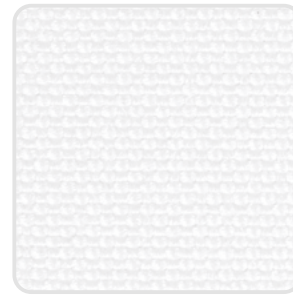


9 OZ **MESH VINYL**

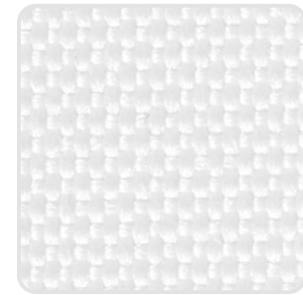


10 OZ **GRAY BACK VINYL**

# FABRIC MATERIALS



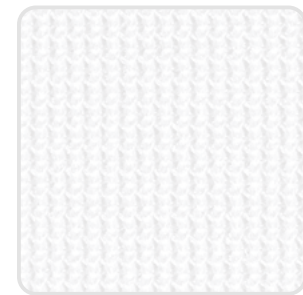
600 DENIER **POLYESTER**



300 DENIER **NYLON**



4-WAY **STRETCH POLYESTER**



SOFT KNIT **POLYESTER**

SKU # CP

# CANVAS PRINTS

*Create a stunning display with our premier quality stretch canvas prints. Printed at a maximum 1400 x 1400 DPI, these high resolution prints are sure to capture anyone's attention. We use the best quality frames and stretch the prints by hand for a clean, professional look.*

## AVAILABLE IN SIZES

**8" x 10" / 11" x 14"**  
**12" x 16" / 12" x 18"**  
**16" x 20" / 16" x 24"**  
**18" x 24" / 24" x 36"**  
**32" x 48" / 12" x 12"**  
**16" x 16" / 24" x 24"**

FULL DIGITAL PRINT

FADE RESISTANT INK

HAND STRETCHED





**CAMPUS**  
Printing & Design

**PRODUCT CATALOG**

**LOCATED INSIDE THE UNIVERSITY BOOKSTORE  
6049 E. 7TH STREET, LONG BEACH, CA, 90840**

**EMAIL: [CPAD@CSULB.EDU](mailto:CPAD@CSULB.EDU)  
PHONE: 562.985.5050**