

---

# RESOURCES FOR UNDOCUMENTED STUDENTS

---

DIVISION OF STUDENT AFFAIRS

**CAMPUS RESOURCES**

**SCHOLARSHIP RESOURCES**

**STATEWIDE RESOURCES  
FOR LEGAL ASSISTANCE**

**EMPLOYMENT RESOURCES**





## CAMPUS RESOURCES

### DREAM SUCCESS CENTER

Student Success Center - 290  
562.985.5869  
dream@csulb.edu  
www.csulb.edu/dream

The Dream Success Center is dedicated to providing services, resources, and support to undocumented students on campus. Direct immigration legal services are also available free of charge through CARECEN for students, staff, faculty, and their families. For more information on these services, please see the last page of this guide.

### BASIC NEEDS PROGRAM

University Library - 011  
562.985.2038  
supportingstudents@csulb.edu  
www.csulb.edu/basicneeds

The Basic Needs Program is comprised of the ASI Beach Pantry, CalFresh Outreach Program, and Student Emergency Intervention and Wellness Program, all designed to assist students who are food and housing insecure.

### BEACH CENTRAL

Intake:  
Brotman Hall Courtyard, 1st Floor  
Counseling Service:  
Brotman Hall - 201  
Beach Central/Enrollment Services  
562.985.5471  
Financial Aid Only  
562.985.8403

Beach Central is one stop for all questions and concerns related to Admissions, Financial Aid, and Student Records.

### CSULB COLLEGE OF BUSINESS LEGAL RESOURCE CENTER

College of Business, Room 322  
cob-lrc@csulb.edu  
www.csulb.edu/college-of-business-legal-resource-center

The Legal Resource Center (LRC) assists undergraduate and graduate students with access to legal resources and opportunities that will further achieve their educational goals, including immigration questions.

### COUNSELING & PSYCHOLOGICAL SERVICES (CAPS)

Brotman Hall - 226  
562.985.4001  
www.csulb.edu/caps

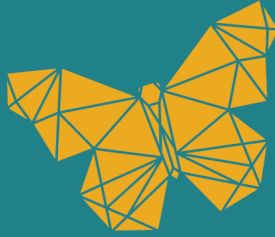
CAPS provides short-term counseling for individuals, group counseling, career development counseling, referral services, psychoeducational workshops, and crisis intervention for students.

### STUDENT AFFAIRS DIVISION OFFICE

Brotman Hall - 377  
562.985.5587  
studentservices@csulb.edu  
www.csulb.edu/students

Students can be connected to resources, services, programs, and staff members to assist them with questions and concerns.





## SCHOLARSHIP RESOURCES

### DATABASES

#### **CSULB**

[csulb.academicworks.com](http://csulb.academicworks.com)

Beach Scholarships

#### **DREAMERS ROADMAP**

[scholarships.dreamersroadmap.com/](http://scholarships.dreamersroadmap.com/)

Scholarships

#### **IMMIGRANTS RISING**

[CLICK HERE FOR UNDERGRADUATE SCHOLARSHIPS](#)

[CLICK HERE FOR GRADUATE SCHOLARSHIPS](#)

Undergraduate & Graduate Scholarships

#### **MALDEF**

[CLICK HERE](#)

Scholarship Resource Guide 2020-21 & Law School Scholarship Program

#### **MY UNDOCUMENTED LIFE**

[CLICK HERE](#)

College Scholarships

#### **NITRO COLLEGE**

[CLICK HERE](#)

Scholarship Opportunities for Undocumented Students

#### **PRE-HEALTH DREAMERS**

[CLICK HERE](#)

Scholarship List

#### **SCHOLARSHIPAZ**

[www.scholarshipsaz.org/scholarships/](http://www.scholarshipsaz.org/scholarships/)

[CLICK HERE FOR MORE SCHOLARSHIPS](#)

Scholarship List

#### **SCHOLARSHIPS.COM**

[CLICK HERE](#)

Scholarships for Undocumented Students





## SCHOLARSHIP RESOURCES

### REOCCURING SCHOLARSHIPS

#### **BETANCOURT MACIAS FAMILY SCHOLARSHIP FOUNDATION**

[www.undocuscholars.com/](http://www.undocuscholars.com/)

THE CLAUDIA PATRICIA GÓMEZ GONZÁLES SCHOLARSHIP

THE VICTORIANO MACIAS LUEVANO SCHOLARSHIP

BLACK IS BRILLIANT SCHOLARSHIP

EL DERECHO A SOÑAR (THE RIGHT TO DREAM) SCHOLARSHIP

MARIPOSA SIN FRONTERAS SCHOLARSHIP

#### **SALLY CASANOVA**

[CLICK HERE](#)

Sally Casanova Pre-Doctoral Scholars Program

#### **HISPANIC SCHOLARSHIP FUND**

[CLICK HERE](#)

HSF Scholarship

#### **THE DREAM.US**

[CLICK HERE](#)

National Scholarship

#### **ROCIO**

[www.rociofilm.com/home](http://www.rociofilm.com/home)

ROCIO Film Scholarship for Undocumented Students

#### **UNITED STATES HISPANIC LEADERSHIP INSITUTE**

[CLICK HERE](#)

Dr. Juan Andrade Jr. Scholarship for young Hispanic Leaders





**STATEWIDE RESOURCES  
FOR LEGAL ASSISTANCE**

**ACCESS CALIFORNIA  
SERVICES**

[www.accesscal.org](http://www.accesscal.org)  
[info@accesscal.org](mailto:info@accesscal.org)

(714) 917-0440  
Anaheim

**ACCESS, INC. -  
IMMIGRATION SERVICES**

[www.access2jobs.org](http://www.access2jobs.org)  
[info@access2jobs.org](mailto:info@access2jobs.org)

(858) 560-0871  
San Diego

**ALLIANCE FOR  
AFRICAN ASSISTANCE**

[gm@alliance-for-africa.org](mailto:gm@alliance-for-africa.org)  
[www.alliance-for-africa.org](http://www.alliance-for-africa.org)

(619) 286-9052 ext. 229  
San Diego

**ARAB RESOURCE AND  
ORGANIZING CENTER**

[info@araborganizing.org](mailto:info@araborganizing.org)  
[www.araborganizing.org](http://www.araborganizing.org)

(415) 861-7444  
San Francisco

**ASIAN AMERICANS  
ADVANCING JUSTICE-LA**

[info@advancingjustice-la.org](mailto:info@advancingjustice-la.org)  
[www.advancingjustice-la.org](http://www.advancingjustice-la.org)

(213) 977-7500  
Los Angeles

**ASIAN PACIFIC ISLANDER  
LEGAL OUTREACH**

[www.apilegaloutreach.org](http://www.apilegaloutreach.org)

(415) 567-6255  
San Francisco

**ASIAN PACIFIC ISLANDER  
LEGAL OUTREACH**

[www.apilegaloutreach.org](http://www.apilegaloutreach.org)

(510) 251-2846  
Oakland

**ASSOCIATION OF  
SALVADORANS  
OF LOS ANGELES**

[info@asosal.org](mailto:info@asosal.org)  
[www.asosal.org](http://www.asosal.org)

(213) 483-1244  
Los Angeles

**CAMINO IMMIGRATION  
SERVICES**

[help@caminoimmigration.org](mailto:help@caminoimmigration.org)  
[www.caminoimmigrationservices.org](http://www.caminoimmigrationservices.org)

(657) 217-2365  
Placentia

**CASA CORNELIA  
LAW CENTER**

[lawcenter@casacornelia.org](mailto:lawcenter@casacornelia.org)  
[www.casacornelia.org](http://www.casacornelia.org)

(619) 231-7788  
San Diego

**CATHOLIC CHARITIES OF  
LOS ANGELES - IMMIGRATION  
& REFUGEE RESETTLEMENT**

[info@CatholicCharitiesLA.org](mailto:info@CatholicCharitiesLA.org)  
[www.catholiccharitiesla.org](http://www.catholiccharitiesla.org)

(213) 251-3411  
Los Angeles

**CATHOLIC CHARITIES OF  
LOS ANGELES  
ST. MARGARET CENTER**

[info@CatholicCharitiesLA.org](mailto:info@CatholicCharitiesLA.org)  
[www.catholiccharitiesla.org](http://www.catholiccharitiesla.org)

(310) 672-2208  
Lennox





**STATEWIDE RESOURCES  
FOR LEGAL ASSISTANCE**

**CATHOLIC CHARITIES OF  
ORANGE COUNTY - IMMIGRATION,  
CITIZENSHIP PROGRAM SERVICES**

[www.ccoc.org](http://www.ccoc.org)

(714) 347-9610  
Santa Ana

**CATHOLIC CHARITIES OF  
SAN BERNARDINO - REFUGEE  
& IMMIGRATION SERVICES**

[info@ccsbriv.org](mailto:info@ccsbriv.org)  
[www.ccsbriv.org](http://www.ccsbriv.org)

(909) 388-1243  
Moreno Valley

**CATHOLIC CHARITIES OF  
SAN BERNARDINO - REFUGEE  
& IMMIGRATION SERVICES**

[info@ccsbriv.org](mailto:info@ccsbriv.org)  
[www.ccsbriv.org](http://www.ccsbriv.org)

(909) 388-1239  
San Bernardino

**CATHOLIC CHARITIES  
OF SAN DIEGO**

[immhelp@ccdsd.org](mailto:immhelp@ccdsd.org)  
[www.ccdsd.org](http://www.ccdsd.org)

(619) 498-0722  
Chula Vista

**CENTRAL AMERICAN  
RESOURCE CENTER**

[info@carecen-la.org](mailto:info@carecen-la.org)  
[www.carecen-la.org/legal\\_services](http://www.carecen-la.org/legal_services)

(213) 385-7800 ext. 136  
Los Angeles

**CENTRAL AMERICAN  
RESOURCE CENTER**

[info@carecen-la.org](mailto:info@carecen-la.org)  
[www.carecen-la.org/legal\\_services](http://www.carecen-la.org/legal_services)

(213) 385-7800 ext.122  
Van Nuys

**COACHELLA VALLEY  
IMMIGRATION SERVICE  
AND ASSISTANCE, INC.**

[mrkler@cvisa.org](mailto:mrkler@cvisa.org)  
[www.cvisa.org](http://www.cvisa.org)

(760) 413-1200  
Palm Springs

**COALITION FOR HUMANE IMMIGRANT  
RIGHTS OF LOS ANGELES**

[info@chirla.org](mailto:info@chirla.org)  
[www.chirla.org](http://www.chirla.org)

(213) 353-1333  
Los Angeles

**COALITION TO ABOLISH  
SLAVERY & TRAFFICKING**

[info@castla.org](mailto:info@castla.org)  
[www.castla.org](http://www.castla.org)

(213) 365-1906  
Los Angeles

**COUNCIL ON AMERICAN-ISLAMIC  
RELATIONS - IMMIGRANTS'  
RIGHTS CENTER**

[ircla@cair.com](mailto:ircla@cair.com)  
[ca.cair.com/losangeles](http://ca.cair.com/losangeles)

(714) 776-1177  
Anaheim

**EL CONCILIO  
FAMILY SERVICES**

[reception@elconciliofs.org](mailto:reception@elconciliofs.org)  
[www.elconciliofs.org](http://www.elconciliofs.org)

(805) 486-9777  
Oxnard

**EL RESCATE  
LEGAL SERVICES**

[www.elrescate.org](http://www.elrescate.org)

(213) 387-3284  
Los Angeles





**STATEWIDE RESOURCES  
FOR LEGAL ASSISTANCE**

**EPISCOPAL DIOCESE OF  
LOS ANGELES - INTERFAITH  
REFUGEE & IMMIGRATION SERVICE**

[iris@ladiocese.org](mailto:iris@ladiocese.org)  
[www.iris-la.org](http://www.iris-la.org)

(323) 667-0489  
Los Angeles

**ESPERANZA IMMIGRANT  
RIGHTS PROJECT**

[www.esperanza-la.org](http://www.esperanza-la.org)

(213) 251-3505  
Los Angeles

**HUMAN RIGHTS  
PROJECT**

[patterson.amelia@gmail.com](mailto:patterson.amelia@gmail.com)  
[www.hrproject.org](http://www.hrproject.org)

(213) 680-7801  
Los Angeles

**IMMIGRANTS  
RISING**

[legalintake@immigrantsrising.org](mailto:legalintake@immigrantsrising.org)  
[www.immigrantsrising.org](http://www.immigrantsrising.org)

(415) 787-3432  
Oakland

**IMMIGRATION RESOURCE  
CENTER OF SAN GABRIEL VALLEY**

[info@ircsgv.org](mailto:info@ircsgv.org)  
[www.ircsgv.org](http://www.ircsgv.org)

(626) 509-9472  
Monrovia

**IMPORTA SANTA  
BARBARA**

[importasb@gmail.com](mailto:importasb@gmail.com)  
[www.importasb.org](http://www.importasb.org)

(805) 604-5060  
Santa Barbara

**JEWISH FAMILY SERVICE  
OF SAN DIEGO**

[CLICK HERE](#)

(858) 637-3245  
San Diego

**KOREAN RESOURCE  
CENTER**

[krcla@krcla.org](mailto:krcla@krcla.org)  
[www.krcla.org](http://www.krcla.org)

(323) 937-3718 ext. 4  
Los Angeles

**LEGAL AID FOUNDATION  
OF LOS ANGELES  
(EAST L.A. OFFICE)**

[www.lafla.org](http://www.lafla.org)

(213) 640-3883  
Los Angeles

**LEGAL AID FOUNDATION  
OF LOS ANGELES  
(LONG BEACH OFFICE)**

[www.lafla.org](http://www.lafla.org)

(562) 435-3501  
Long Beach

**LEGAL AID FOUNDATION OF  
LOS ANGELES  
(RON OLSON JUSTICE CENTER)**

[www.lafla.org](http://www.lafla.org)

(323) 801-7989  
Los Angeles

**LEGAL AID FOUNDATION OF  
LOS ANGELES  
(SANTA MONICA OFFICE)**

[www.lafla.org](http://www.lafla.org)

(310) 899-6200  
Santa Monica





**STATEWIDE RESOURCES  
FOR LEGAL ASSISTANCE**

**LEGAL AID FOUNDATION OF  
LOS ANGELES  
(SOUTH LOS ANGELES OFFICE)**

[www.lafla.org](http://www.lafla.org)

(213) 640-3950  
Los Angeles

**LOS ANGELES CENTER FOR  
LAW AND JUSTICE**

[info@laclj.org](mailto:info@laclj.org)  
[www.laclj.org](http://www.laclj.org)

(323) 980-3500  
Los Angeles

**MIXTECO/INDIGENA  
COMMUNITY ORGANIZING  
PROJECT (MICOP)**

[www.mixteco.org](http://www.mixteco.org)

(805) 483-1166  
Oxnard

**MIXTECO/INDIGENA  
COMMUNITY ORGANIZING  
PROJECT (MICOP)**

[www.mixteco.org](http://www.mixteco.org)

(805) 623-5862  
Santa Maria

**NATIONAL CENTER FOR  
LESBIAN RIGHTS -  
IMMIGRATION PROJECT**

[info@nclrights.org](mailto:info@nclrights.org)  
[www.nclrights.org](http://www.nclrights.org)

(415) 392-6257  
San Francisco

**PUBLIC COUNSEL -  
IMMIGRANTS' RIGHTS PROJECT**

[www.publiccounsel.org](http://www.publiccounsel.org)

(213) 385-2977 ext. 296  
Los Angeles

**PUBLIC LAW  
CENTER**

[info@publiclawcenter.org](mailto:info@publiclawcenter.org)  
[www.publiclawcenter.org](http://www.publiclawcenter.org)

(714) 541-1010  
Santa Ana

**SAN BERNARDINO COMMUNITY  
SERVICE CENTER, INC.**

[sbcsc.org@gmail.com](mailto:sbcsc.org@gmail.com)  
[www.sbcscinc.org/](http://www.sbcscinc.org/)

(909) 885-1992  
San Bernardino

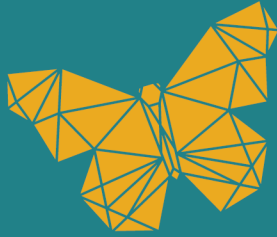
**WORLD  
RELIEF**

[wrsocal@wr.org](mailto:wrsocal@wr.org)  
[www.worldreliefsocal.org/](http://www.worldreliefsocal.org/)

(714) 210-4730  
Garden Grove







## EMPLOYMENT RESOURCES

### CSULB CAREER DEVELOPMENT CENTER

Brotman Hall - 250  
562.985.4151  
careers.csulb.edu

The Career Development Center assists students with exploring career/major options, preparing for job searches, and connecting to employment opportunities. Services include resume assistance, interview skills building, and more.

### IMMIGRANTS RISING

[immigrantsrising.org/](http://immigrantsrising.org/)

Immigrants Rising provides programs, services, and resources to empower undocumented young people to achieve educational and career goals through personal, institutional and policy transformation.

[Online Contracting Opportunities in High Demand](#)

[Income and Career Alternatives for Undocumented Students \(webinar\)](#)

[ITIN 101: Everything you want to know about ITINs, But Don't know what to ask \(webinar\)](#)

[Entrepreneurship Fund](#)

### LOS ANGELES COUNTY ECONOMIC DEVELOPMENT CORPORATION

[laedc.org/](http://laedc.org/)

LAEDC is a non-profit organization dedicated to advancing opportunity and prosperity for all and hosts events and shares research on the local economy.

### MEETUP

[www.meetup.com/find/career-business/](http://www.meetup.com/find/career-business/)

Meetup is an online platform for building local communities. There are Career & Business Meetup groups around the world that are open to new members.

### STATE OF CALIFORNIA EMPLOYMENT DEVELOPMENT DEPARTMENT

[www.edd.ca.gov/](http://www.edd.ca.gov/)

EDD administers the Unemployment Insurance and State Disability Insurance programs and gathers, analyzes, and publishes labor market information.



# FREE IMMIGRATION LEGAL SERVICES

FOR STUDENTS, EMPLOYEES, & THEIR FAMILIES  
**DREAM SUCCESS CENTER SSC-290**

---

Direct immigration legal services are available free of charge to CSU students, employees, and their families. Attorneys and paralegals are available to assist students with general consultations, DACA renewals, and general assistance in filling out forms such as family-based petitions. This project aims to serve undocumented students, students with immigration questions, staff, and faculty.

---

---

**TO ACCESS SERVICES  
PLEASE MAKE AN APPOINTMENT**  
<https://carecenla.simplybook.me/v2/>

---



**For questions, please contact: [srivera@carecen-la.org](mailto:srivera@carecen-la.org)**

If you would like to request accommodations, please contact the Bob Murphy Access Center at least 72 hours before the event.  
562.985.5401

