



GET ON THE
INSIDE TRACK

BEACH WOMEN IN ENGINEERING

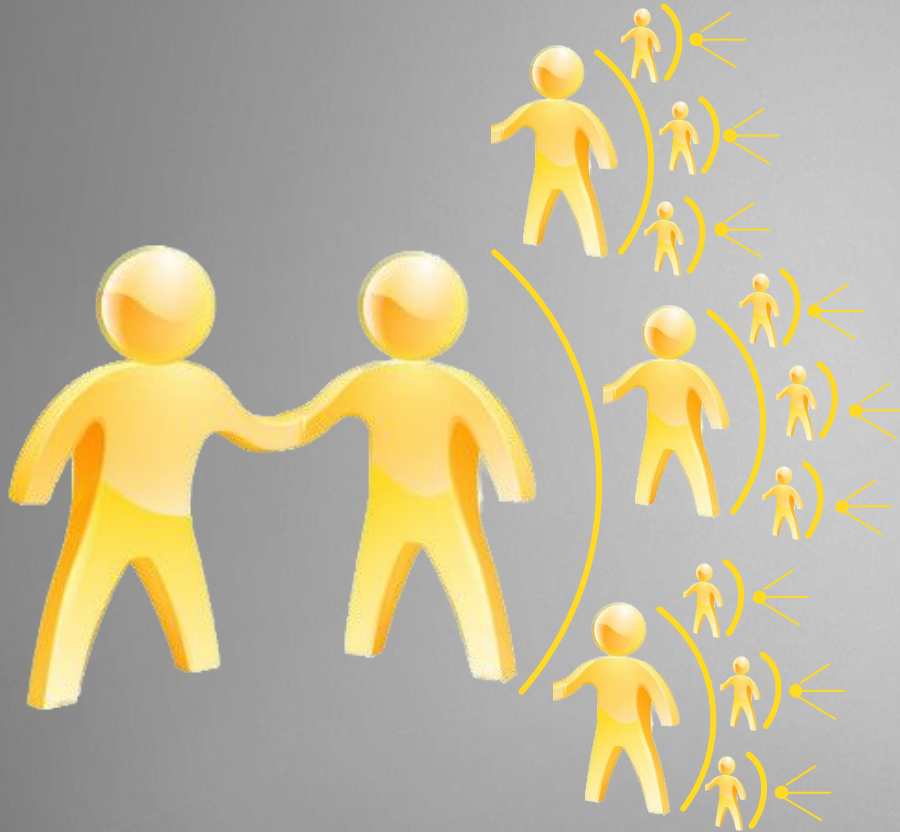
2024 CONFERENCE

2024 Women in Engineering Conference

CSULB 100+ Women Strong Coaching Circle

Building Your Professional Network

Network to Grow Your Sphere of Contacts & Expand Your Career Opportunities



Opportunities arise from what you know AND who you ~~knew~~ **connect with.**

Today is a great format for you to practice networking.

Keep drilling down and reaching out to find the contact that can launch your next step or support you in your journey.

The Importance of Networking

Connections = Success

Majority of professionals want to network

- Share their knowledge and advance others or expand their own network
- Eliminate preconceived notions > young & old, men & women, position & status
- Treat everyone with respect > they may have a future effect on you

Networking is instrumental to your career and growth

- Allows you access to unknown opportunities & provides options
- Provides insight into different fields, information on what potential employers look for & advice on how you can improve professionally
- Establish relationships that will promote you
- Great achievements are only valuable if they are noticed >> get on the inside track

*85% of jobs are filled through networking
70% of jobs are never published publicly*

Networking is an Investment

Socializing in person is still your best chance of creating a successful network.

Dedicate
Time &
Effort

Seek out networking events

Conferences will lead to connections and info on companies and industries

Networking in the digital age
World is at your fingertips

On-line webinars, email newsletters, magazines, Industry blogs, LinkedIn

Start immediately with current connections

Professors, classmates & workplace colleagues

Maximize your interactions
Develop a script

Know the background of your contact
Be intentional and proactive

Establish your presence
Resume, LinkedIn, Website

Define your strengths & interests
Groundwork for conversation

Session Activity: Step Outside Your Comfort Zone!

*Step so far outside your comfort zone that you forget how to get back.
If it doesn't challenge you, it doesn't change you.*

FIND YOUR INTEREST

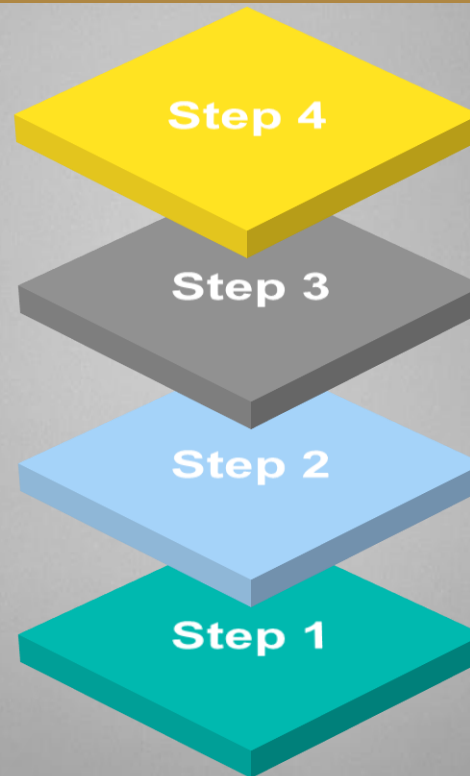
3

Research industries &
subscribe to information

DEFINE YOURSELF

1

Skills, strengths & interests
Write your script



4

PLAN APPROACH

Network with intention.
Broaden your
connections.

2

INNER CIRCLE

How can you connect
now & with whom?
Write a list.

100+ Women Strong is Here to Support You



Network with Today's Coaches



Holly
Craig

Owner/VP
Stratonics, Inc.

CSULB – BS
Electrical
Engineering

<https://www.linkedin.com/in/holly-craig-stratonics/>



Emily
Woodman-Nance

CEO, Co-Founder
At Their Side

Chapman
University – BS
Computer
Information
Systems

<https://www.linkedin.com/in/emily-woodman-nance-9650b44/>



Tan
Warren

VP Business
Development &
Marketing

Brascia Builders,
Inc.

WGU - BS
Marketing
Management

<https://www.linkedin.com/in/tandwarren/>



Kim
Armstrong

Sr. HR Business
Partner

Boeing

CSULB - MA
Education,
Instructional
System
Technology

<https://www.linkedin.com/in/kim-a-armstrong-ed-d-88b8a7149/>



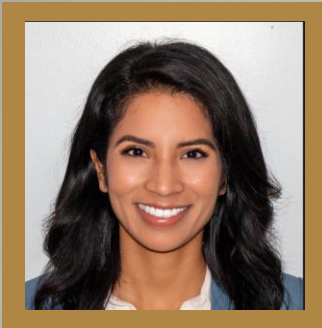
Jennifer
Johnson

Global Strategic
Planning & Delivery
Leader

Fin Tech
Fortune 200

USC – EMBA
CSU Pomona – BSCE
<https://www.linkedin.com/in/jennifer-l-johnson/>

Network with Today's Coaches



Michelle
Keyser

Manager of
Supplier Diversity

Hensel Phelps

Cal Poly-San Luis
Obispo – BS
Construction
Management

<https://www.linkedin.com/in/michelle-keyser/>



Alyssa
O'Book

Project Manager

Hensel Phelps

Arizona State Univ
BS Construction
Management

<https://www.linkedin.com/in/alyssa-o%E2%80%99book-bab63822/>

The journey of a thousand miles begins with one step. Lao Tzu

Post Event Survey

We want your feedback!
https://whova.com/portal/survey/beach1_202403/35336/?token=06cc683b2c88267c4df1dccbd2a794a05df68a200add651b525e42e679dd5293

Join Us Again

Watch for our next event.
<https://www.csulb.edu/college-of-engineering/100-women-strong>

Get Support

Career Development Center
<https://www.csulb.edu/career-development-center>



Connect with speakers on Whova App & LinkedIn

Introduce yourself & exchange information, ask questions.



Powerful Information

Review all CC Slide Decks.
<https://www.csulb.edu/college-of-engineering/coaching-circles-2024>



Create a Journal

Write down lessons learned, goals, next steps with timeline, & career goals.



100+ Women Strong want to thank you for attending.

Become a member of 100+ Women Strong.

<https://www.csulb.edu/college-of-engineering/100-women-strong-steering-committee>

Connect with us on Linked In

<https://www.linkedin.com/groups/14238580/>