

Envisioning the Future
BEACH WOMEN IN ENGINEERING CONFERENCE

Starting a New Job

All Speakers listed on last slide

April 9, 2022

100+ Women Strong
CSULB COLLEGE OF ENGINEERING

The Journey to Today...

Mia M. Fujii, Director level: Portfolio Development Executive at SIEMENS

Age: 22
Graduate
UC Irvine
Electrical
Engineer



First Job: Control Data Corporation
designing circuits for Aerospace customers

Second Job: a few years
later...built & tested RAD HARD electronic
systems for the Air Force

Third Job: a few years later...
Value Added Reseller position providing
Mechanical Engineering solutions

Fourth Job: a bit later...
Technical Sales with company that became
Siemens



Fifth thru current Job:
Technical sales, Local Mgr., Bus Development
Mgr., Services Director, Americas Zone Mgr.
Compliance Director to current role
27+ years
SIEMENS



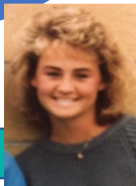
Got Married
Had Three children



The Journey to Today...

Roni Allen, Computer Engineering & Computer Science Instructor, CSULB

Age:28
Graduate
CSULB
Business



First Job: Worked for a small software company that sold and supported accounting software for manufacturing and distribution companies

Second Job: Teaching Part time at CSULB CECS department

Masters in Educational Technology:
Age: 38



Still teaching at CSULB. Also involved in grants working with teachers and students.

Currently teaching at Cerritos Community College and working as a Women in Engineering Conference organizer.



The Journey to Today...

Anne Devine, Chief Operating Officer at Romeo Power



The Journey to Today

Elizabeth Roney, Systems Integration Engineer II at Thermo Fisher Scientific in the Genetic Testing Solutions division

2019
Graduated Tulane University with a B.S. in Biomedical Engineering and B.A. in English



Internship: Mechanical Engineering, Intraoperative Brachytherapy at Xoft

Masters Degree, Biomedical Engineering (Tulane again, 2020)



Contractor, Thermo Fisher Scientific: Systems Engineer for DNA Microarrays

Today: Systems Engineer II for Genetic Testing Services



Next Steps?



Work life balance...take care of the big rocks...

- Did you ever notice that the word TIME has the word 'ME' in it?
- Make sure to note **T**ime **I**nvested in what is important to **ME**



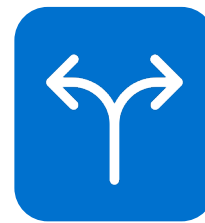
Time with
family &
friends



Time to work
on career



"ME" time to
learn, grow,
build network
outside of work



Time to evaluate,
take inventory on
direction to take
with career



Time it takes to
change and to
move on to the
next role

First Job “Great to know tips”

What does success look like:

- Build a strong support system: Ask yourself key questions about what interests you the most and connect with those that can help develop you even more in those areas of interest.
- Growing up my dad would always say, “You are what you hang around.” Something I say to my kids now. - R Allen

First Job “Great to know tips”

- Have a Voice...don't worry about what others might think of you...focus on key areas you can contribute and make that known to others.

im·pos·tor syn·drome

noun

noun: **imposter syndrome**

the persistent inability to believe that one's success is deserved or has been legitimately achieved as a result of one's own efforts or skills.

"people suffering from impostor syndrome may be at increased risk of anxiety"

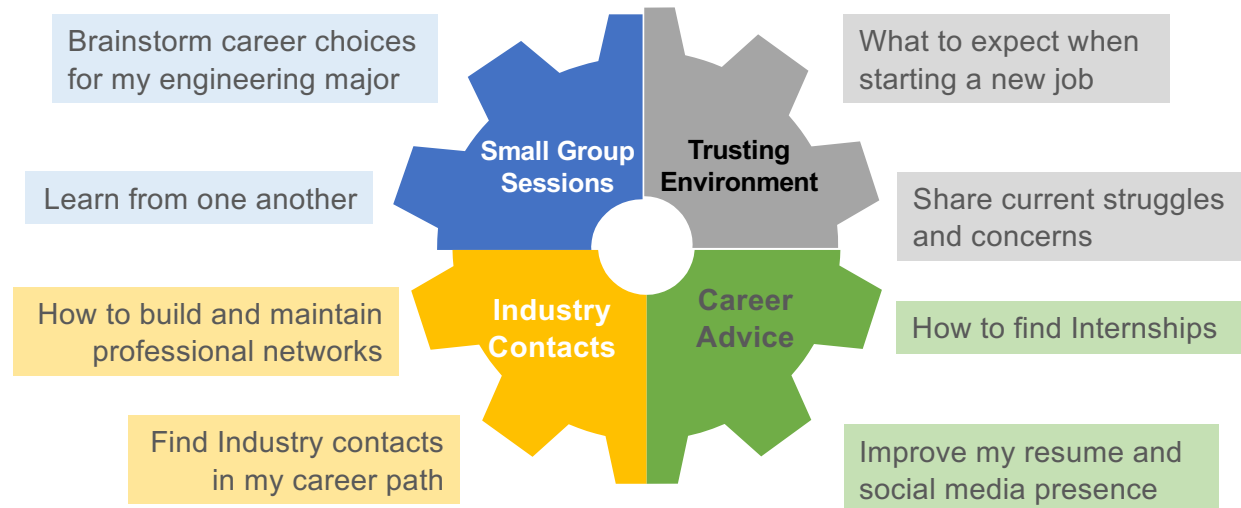
Oxford Dictionary definition

Session Activity: Recognize the Imposter Syndrome, stop it in its tracks!



- Take 10 minutes to think of two situations where you felt the imposter **syndrome**
- Ask the student to your right to describe their two situations
 - What emotions did they feel?
 - Ask if they spoke up, or felt bad in silence, and if they did not speak up, why did they remain silent? Write down their responses.
 - Ask what they would have done differently if they could relive those moments?
- Write down how you would suggest they deal with each situation
- Have that student ask you about your two situations
- Share how you are feeling describing these moments in time
- We will share our stories with large group for 10 minutes

How can 100+ Women Strong support you? Let us know – we are seeking your input!



100+ Women Strong want to thank you for attending Starting a New Job

“The journey of a thousand miles begins with one step.”
Take a step today! Lao Tzu

Make a Connection Today
Introduce yourself & exchange
information, ask questions.
**Connect with speakers on
Whova App**



Powerful Information
Review all CC Slide Decks:
<https://www.csulb.edu/college-of-engineering/coaching-circles-0>



Create a Journal
Write down lessons learned,
goals, next steps & timeline.
Grow & maintain your network



Post Event Survey
We want your feedback.
Survey on Whova App



Join Us Again Soon
Attend our next event—later this year
<https://www.csulb.edu/college-of-engineering/100-women-strong>



Get Support
Be a member of 100+ Women Strong
<https://www.csulb.edu/college-of-engineering/100-women-strong-steering-committee>



BEACH WOMEN IN ENGINEERING CONFERENCE

Linked In Contacts – Networking Coaching

Name	Company	Position	Linked In
Mia Fujii	Siemens Digital Industries Software	Portfolio Development Executive	https://www.linkedin.com/in/miafujii/
Roni Allen	CSULB	Faculty	https://www.linkedin.com/in/roni-allen/
Elizabeth Roney	Thermo Fisher Scientific	Systems Integration Engineer II	https://www.linkedin.com/in/elizabeth-roney/
Anne Devine	Romeo Power	Chief Operating Officer	https://www.linkedin.com/in/anne-devine-43b8409/
Shoba Varma	Thermo Fisher Scientific	Systems Integration Engineer	https://www.linkedin.com/in/shobavarma/