



DATA FELLOWS

Graduate Studies Unit

Jody Cormack
Elaine Frey
Laura Portnoi
Bryan Rodriguez

May 11, 2018



Current Goals

- Improve data on graduate students
 - Identify any issues with cohort counts and graduation data
 - Collect information about best practices from other CSUs
- Have the ability to compare similar master's programs
- Analyze data on retention, completion, and time to degree to determine obstacles to timely completion and recommend strategies for improvement
- Provide data or reports that are useful for analysis at the program-level

Examining Program-Level Data

- We used student records to verify cohort counts
- Students with multiple post-baccalaureate “records” may not be captured in all cohort counts
- When students break continuous enrollment, they enter the cohort after the enrollment break
- Some students are not assigned the correct plan code

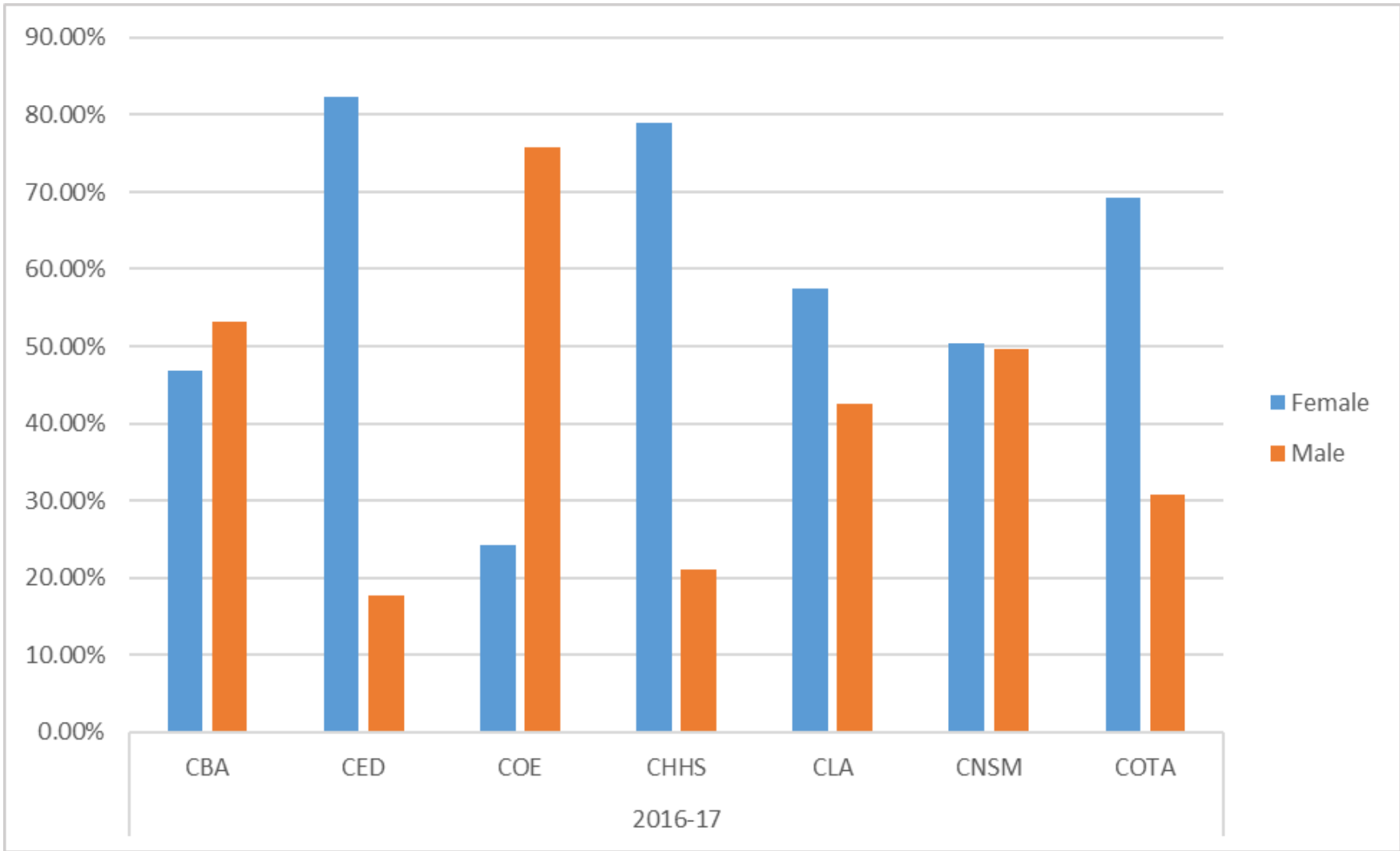
Implications

- Describing cohorts of master's students at the university or college level is reasonable
- There is a possibility that historical data will always have these issues
- We do not recommend college- or program-level analysis until we can work through the issues

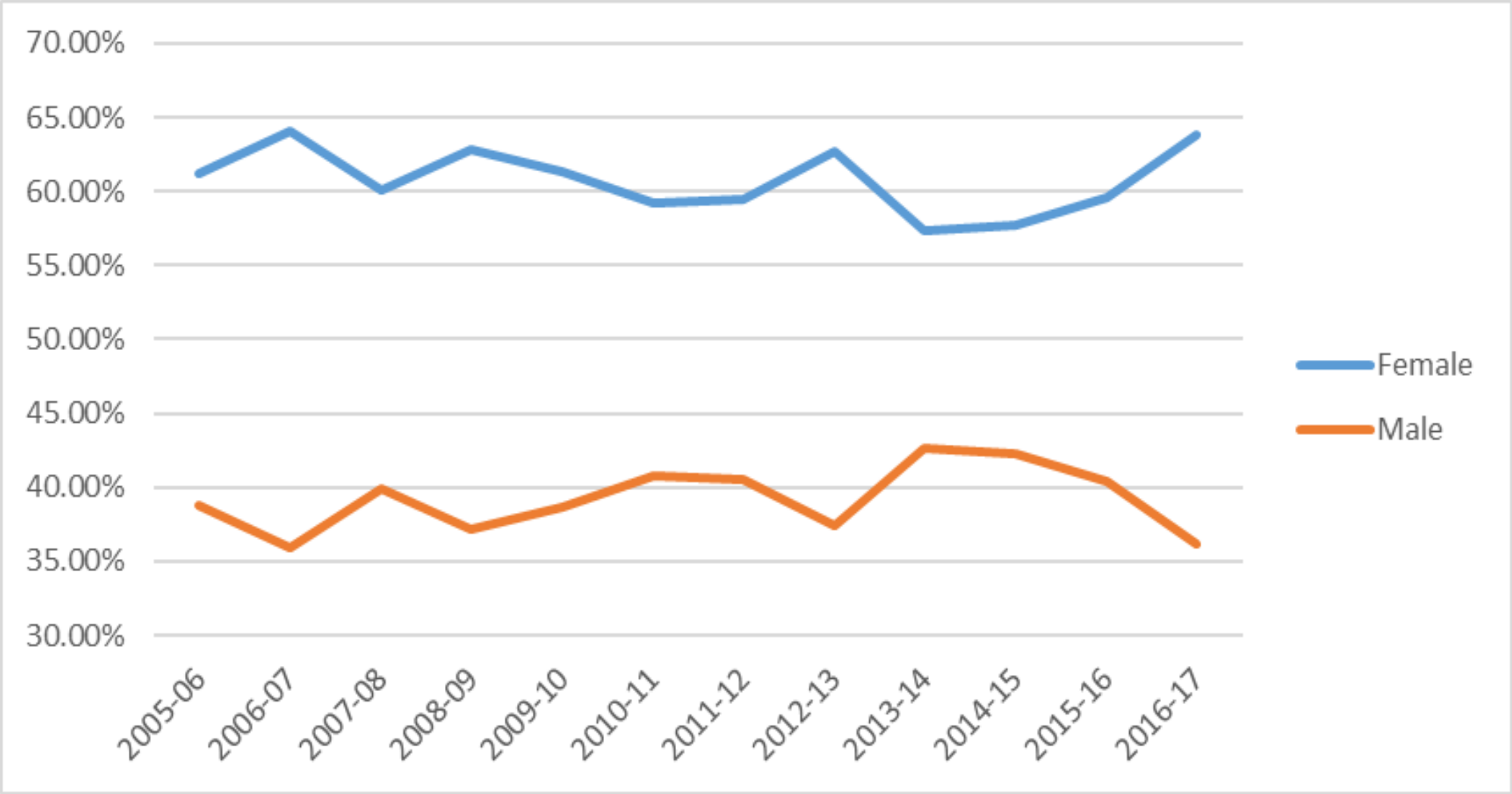
Demographics of Master's Students from AY 2016-17 Cohort

Description	% of Total Students
Female	64%
Male	36%
Minority Status	39%
Latino/Latina	33%
Non-US Visa	13%
First Generation	44%
Parent with Graduate Degree	20%
Received SUG	35%
No Financial Aid	42%

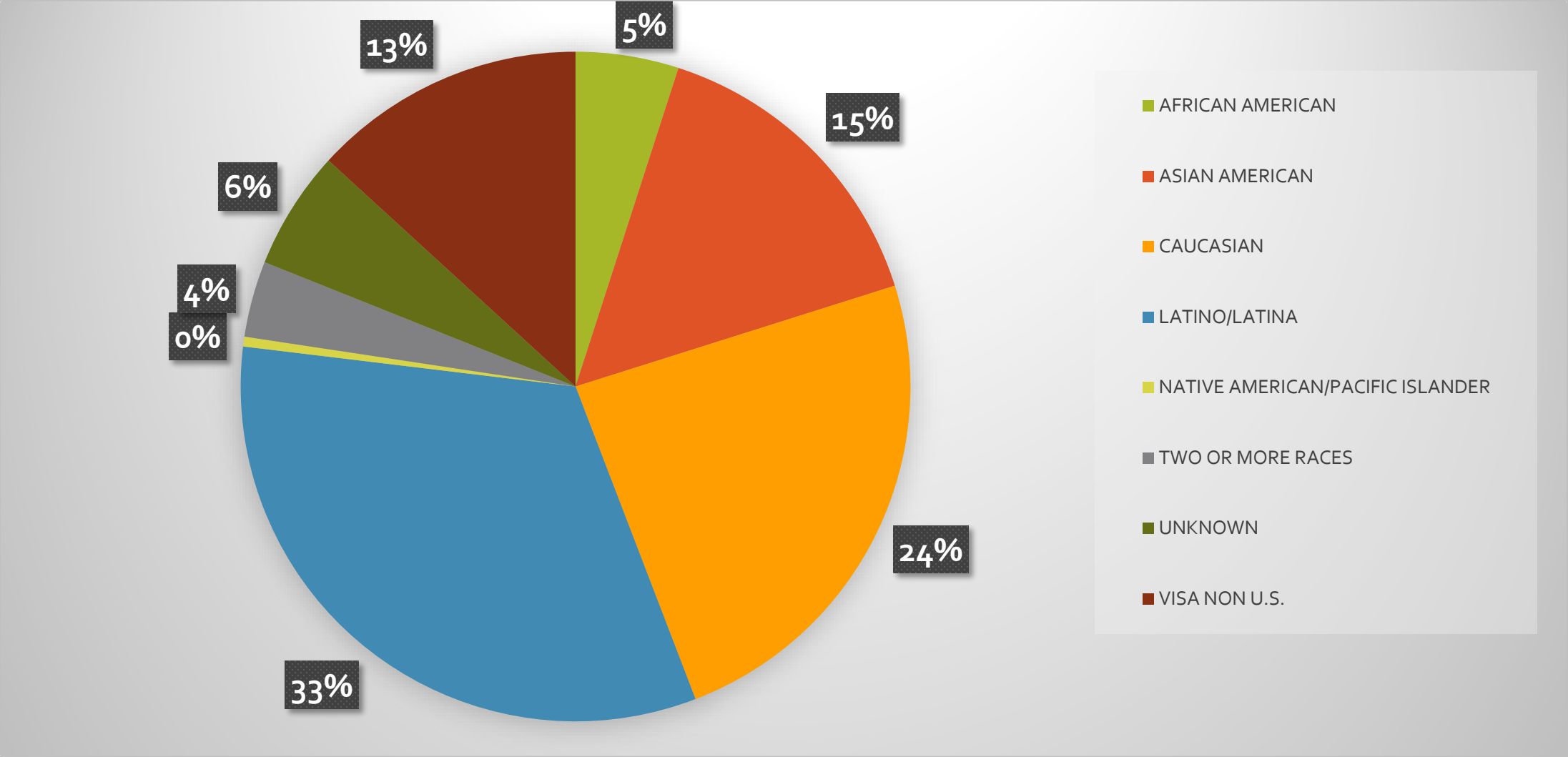
Percentage of Females and Males by College in AY 2016-17 Cohort



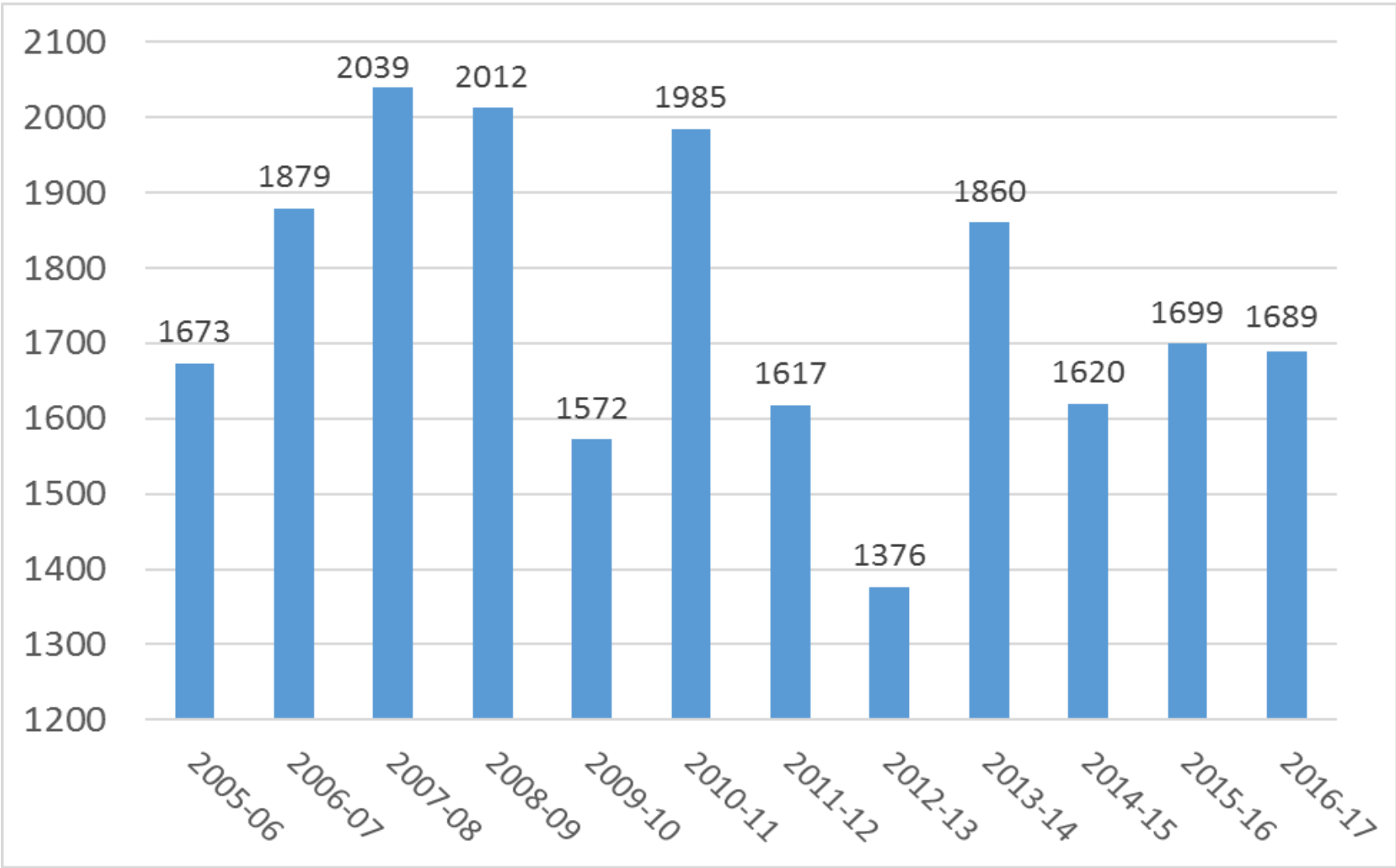
Percentage of Females and Males from 2005-2016 Cohorts



Race or Ethnicity from AY 2016-17 Cohort



Entering Master's Student Cohorts from 2005-2016



Next Steps

- Work with a small group of experts from IRA and Enrollment Services to better understand data and move forward
- Think about ways to track culminating experiences of students (thesis, project, or comprehensive exam)
- Develop graduate surveys that will help capture other important information

How would you like to use graduate student data?

