

INSIDE THIS ISSUE

Faculty Spotlight: Interview with Dr. Maria Claver	<u>2</u>
Business Leadership Academy	<u>3</u>
Engaging the Mind and the Community	<u>4</u>
Engaging Faculty Engaging the Community	<u>5</u>
Please "Like" Us! and Looking Forward to 2011-12	<u>6</u>
The 2010-11 CCE Student Staff	<u>7</u>
The 2010-11 CCE Team	<u>8</u>



VOLUME 4, ISSUE 4, SPRING/SUMMER 2011

POINTS OF INTEREST

- Sign up and be part of the positive change in our community!
- Read how the CCE is benefiting the community!
- Learn about the new, innovative program in the making: The Business Leadership Academy!

COMMON GROUND

A MESSAGE FROM THE DIRECTOR



By **DR. JUAN M. BENITEZ**

Executive Director

This past year was another exciting and successful one for the Center for Community Engagement (CCE). Academic Year 2010/11 proved to be a challenging year but also one filled with wonderful examples of campus-community collaborations on a wide range of existing and new community engagement activities and initiatives involving our students, faculty, and campus and community partners.

To begin, last summer (2010) we were selected to serve as the "host" agency for The California Endowment's (TCE) 10-year Building Healthy Communities (BHC) initiative in central Long Beach on the social determinants of a healthy community. Thanks to a \$637,507 grant

from TCE, the CCE team, which includes Dr. Rigo Rodriguez (CHLS) and Dr. Gary Hytrek (SOC), is helping facilitate the implementation phase of this multi-stakeholder, collaborative initiative on policy and systems change in partnership with the California Conference for Equality and Justice, Khmer Girls in Action and hundreds of other systems leaders, community-based organizations, and adult and youth community members in Long Beach. The CCE is also serving as lead on a \$62,500 AmeriCorps planning grant to bring AmeriCorps members to the BHC: Long Beach initiative for the next 2 years.

We are also very proud to announce that we offered the 6th iteration of our Community Scholars Program (CSP), "Educational Policies and Systems" in fall 2010. Over 120 community leaders from Orange and Los Angeles counties participated in the 30-hour leadership development program held at the Delhi Community Center in Santa Ana. Drs. Jose F. Moreno, Rigo Rodriguez and I served as co-instructors, and more than 30 CSULB students in Chicano & Latino Studies served as co-facilitators and project assistants as part of their service learning experience.

Over the past year the CCE also developed a new partnership with the CSULB College of Business Administration (CBA). Under the

direction of Dean Michael Solt, Prof. Lynn Dymally is serving as the CCE's first CBA Faculty Fellow for Economic Development. The partnership's goals include: Developing and expanding campus-community partnerships focusing on economic development, and developing and increasing community engagement opportunities for students and faculty while addressing the economic needs of small businesses and non-profits in the region.

We are also approaching the final phase of our 3-year HSIAC grant at the Villages at Cabrillo in west Long Beach. Congratulations to all of our partners at the site as well as to all faculty members, staff and students that have been involved with this project over the last 3 plus years. Our Associate Director, Carina Sass (PI on the grant), is working with all of our partners in finding ways to sustain our work at the Villages beyond the duration of the grant.

This spring we welcomed several members to the CCE team, Monica Delgado, Kendra Jennis, and Nancy Pacheco. Monica joined our team as our new Community Engagement Coordinator, helping faculty, students and community partners to connect more effectively and to implement their Service Learning activities. Kendra joined the CCE team as our AmeriCorps

(Continued on page 6)

Faculty Spotlight

Interview with Gerontology Professor, Dr. Maria Claver



By Sokrith Sea

B.S., Food Science & Nutrition, 2010

The Center for Community Engagement (CCE) is a liaison for community partners and a resource for students and faculty in search of service learning projects, community involvement, and education. I was hired through Work Study as the CCE's Web Database Specialist. And I must admit, juggling the database along with all the demands of the CCE was a notable challenge.

However, when I was introduced to Dr. Maria Claver, I was delighted to stumble upon some affirmative outcomes that result when a very proactive faculty member becomes so involved and passionate about service learning. So, I decided to interview her and harvest some of her insightful thoughts.

Do you personally work with the agencies?

Making a connection with the service learning agency supervisor is very important. It shows the students it is a collaborative effort. "When I take the time to get to know the supervisors...it benefits everybody at the university."

What are your expectations of service learning?

I definitely plan on continuing service learning as a vital part of this class, and additionally incorporating a lot of online and hybrid teaching; exploring how to use technology to educate students. This can prove to be effective to take out some class time to accommodate students' schedule needs.

Could you describe service learning in three words?

"Eye-opening, dynamic, and innovative." It is *eye-opening* since many students do not spend much time with older adults, so service learning exposes them to a population with whom they are not familiar. "[It] busts through stereotypes about aging." It is rewarding to get through to students and have them really learn about themselves.

Service learning is *dynamic*, as the experience changes and evolves from semester to semester. The interaction between the students and the agencies is a living and breathing system.

Finally, it is *innovative*, for the reason that it is a fairly new approach to education. It is a cutting edge instructional technique that embodies learning through the combination of technology and hands on experience.

If you could change an aspect of SL, what would you change?

"I love the process, and if someone does it correctly, it will be very powerful."

Is service learning worth the effort?

"It is so worth it. Even though it takes so much energy to set it up, what you get out of it is so immense." Regardless of the slides and videos you utilize in the classroom lecture, it is something about having the students immersed in the field that makes all the difference. Each professor must adapt to what works best for them. I use the weekly journal for the writing-intensive course. "I can't imagine why anyone would not want to do this. As the years progress, work will decrease with [the] preset networks [one has previously established]. I saw the benefits immediately."

Who is Dr. Maria Claver?

Dr. Claver is an Assistant Professor from the Gerontology Graduate Program in the Department of Family and Consumer Sciences. She has played a pioneering role in promoting service learning through the introductory gerontology (GERN 400I) course. "It's a new field," Dr. Claver explains, "I think that it is kind of fun to teach students...this whole new world that students don't really know exists."

What does service learning mean to you?

Service learning is extending the classroom out to the community. It is important to realize that they are not volunteering. "Up a notch from volunteering...it is still a classroom." Students are required to produce a journal and connect it to what the class learns very specifically.

What are some of the benefits of having a service learning course?

"It gives the students just so much of a richer experience. When students evaluate my course, the students realize that...this makes it so much more relatable." Furthermore, service learning develops professionalism, and personal community skills. This benefits the university at large, and the agencies have a very good image of CSULB.

Dr. Claver will continue to teach GERN 400I this year, introducing senior undergraduate students to careers in gerontology.

In addition, Dr. Claver will join the CCE this coming Fall as a CCE Faculty Fellow, advocating for and supporting service-learning initiatives .

Business Leadership Academy

Addressing the Academic Needs of Under-Represented Students

Our goal is to develop business professionals prepared to address the multiplicities of managing business and nonprofit organizations efficiently in under-served, economically challenged, and ethnic communities.



Lynn Vivian Dymally, MA, JD
Adjunct Associate Professor
Legal Studies in Business Program
College of Business Administration,
California State University, Long Beach

Faculty Advisor

Black Business Student Association
Associated Business Students
Organizations Council

Commissioner

President's Commission on the
Status of Women

Faculty Fellow

Center for Community Engagement

(562) 985-7996 Office

Web Page:
www.csulb.edu/~ldymally/

The genesis of this academic collaboration emerged from the progressive philosophy of CBA Dean Michael Solt, the ingenuity of CCE Executive Director Juan Benitez, and the advocacy of CBA Faculty Fellow Lynn Dymally. Conceptually, the project was born out of a request from Sandy Cajal, Executive Director of the Regional Hispanic Chamber of Commerce (RHCC), to have CBA assist in the Chamber's mission to strengthen its ability to better serve its membership by using the skills of CBA student interns. Dean Solt sought out the assistance of the CCE and appointed Professor Dymally to work together with Dr. Benitez and Ms. Cajal to assess the specific needs of RHCC in conjunction with developing a program to prepare CSULB students by providing them with an enhanced academic service learning experience.

Essential to the development of this collaborative project is the participation of all the ethnic studies programs on campus. After several joint meetings, one with Dean Gerry Riposa and another with Chicano & Latino Studies Chair Jose Moreno, and American Indian Studies Chair Troy Johnson, a consensus was reached to begin the work on the curriculum, covering topics related to the unique aspects of economic development as well as business and non-profit needs in under-served communities.

The pilot program begins this summer 2011 as a six week Business Leadership Academy consisting of two courses . The

Collegiality is alive and well on the campus of CSULB, as evidenced by the collaborative efforts of the College of Business Administration (CBA), the Center for Community Engagement (CCE), and all the Ethnic Studies programs on campus. In the near future, CSULB students will have the extraordinary opportunity to participate in an academic program designed to mesh culture with business practices.

identification and selection of student participants was a collaborative effort. In fact, this may very well be the first of its kind. More than that, seldom has there been a cross-college collaboration specifically developed for business with a cultural emphasis. The willingness of CBA to pursue program opportunities which will address the academic needs of under-represented students in order to prepare them professionally to meet the needs of their communities is to be lauded.

Other service learning projects currently in the works this year are green building and sustainable design initiatives at Villages at Cabrillo being developed for MBA students, as well as a Long Beach Latino Business Improvement District.

Engaging the Mind and the Community

Leveraging Resources to Transform Lives



By Teresa Hagen

California State University, Long Beach's Center for Community Engagement (CCE) has an impressive record of engaging students and faculty in service-learning activities and research, and connecting the campus with community-based social programs. Thanks to a three-year \$599,885 Hispanic-Serving Institutions Assisting Communities (HSIAC) grant from the Department of Housing and Urban Development's Office of University Partnerships, CCE has significantly expanded its outreach to one of the largest homeless residential programs in the U.S., the Villages at Cabrillo, a comprehensive social service community serving veteran and non-veteran homeless individuals and families.

Located on a former U.S. Navy housing site in west Long Beach, the Villages at Cabrillo offers a unique model for social services. The community currently provides shelter for approximately 1,000 residents, including nearly 500 veterans. Its family housing and support services include emergency and transitional shelters, permanent housing and relief services. To do its part, CCE leverages university resources to help families as they transition from the streets to

permanent homes, developing an array of projects and services that complement the Villages' already exceptional housing facilities.

CCE used part of the HSIAC grant to renovate a 1,200 square-foot vacant modular building and establish the CSULB Oasis Community Center, a much-needed common space available to all Villages at Cabrillo residents. Oasis lives up to its name, providing a welcoming space for adults and youth. At least 52 CSULB students interns, Federal Work Study and service-learning students from disciplines such as psychology, family and consumer science, and education—provided support to Oasis and other Villages at Cabrillo programs this year.

Additionally, CCE has partnered with community and faith-based organizations serving the Villages at Cabrillo to establish an infrastructure to support resident services and programs. CCE works particularly close with Catholic Charities and

Century Villages at Cabrillo, as well as PATH Ventures, and Long Beach Unified School District's Bethune Transitional Program for Homeless Children (Bethune). CCE and Linguistics Department professor Michael Fender also work with these and other organizations to strengthen families by enhancing out-of-school academic and enrichment programs, and addressing gaps in existing services and programs. As a result, 48 children received after-school academic mentoring by 33 CSULB students through Long Beach Better Learning for All Students Today (BLAST), and 100 children attended educational field trips.

Linguistics Department professor Malcolm Finney spearheaded community-based participatory research efforts by meeting with Villages at Cabrillo organizations and CSULB faculty to understand and respond to the community's needs. This collaborative approach results in research benefitting both the faculty researcher and the community.

** Reprinted with permission from the CSULB Foundation 2010 Annual Report*



Engaging Faculty Engaging the Community

CSULB Community Engagement Institute: April 21, 2011

On April 21, 2011 the Center for Community Engagement (CCE) held our campus's first Community Engagement Institute at the Faculty Center for Professional Development. This half-day institute focused on sharing information, best practices, and highlighting the different opportunities, resources, and support available for faculty to connect with communities, including but not limited to: Service Learning, Community-based Participatory Research, risk management, and other community engagement models, projects, activities, and approaches on campus.



The institute was designed both for faculty that were "new" to community engagement but had an interest in finding out more as well as for more experienced faculty to be brought up to date on current university-wide and CCE resources, opportunities, procedures, and policies.

We had an invigorating day with 34 faculty members (including 3 department chairs) who actively participated in the entire half day institute.

Provost Don Para opened the event, reaffirming our campus's commitment to support faculty in advancing our university's mission to community engagement. During a working lunch,

Judy Botelho, Director of the Center for Community Engagement at the CSU Chancellor's Office, provided a keynote address focusing on CSU-wide perspectives on Service Learning and Community Engagement.

The event was organized by a team made up of CCE staff, Terre Allen (Faculty Center for Professional Development), Maria Claver (Gerontology), George Hart (English), Lynn Dymally (College of Business Administration), Rigo Rodriguez (Chicano & Latino Studies), and Gary Hytrek (Sociology).

The day consisted of two concurrent Break Out Sessions on: "Service Learning 101," "Plugging in: Center for Community Engagement Partnerships, Initiatives, and Projects," and "Community-based Participatory Research." There was also a large group session titled, "Community Engagement Nuts & Bolts," focusing on our Service Learning Pro Database and resources such as Instructionally Related Activities (IRA) and Lottery funds. Part of this discussion also focused on community partnership development, the implementation of Service Learning Agreements and risk management related issues, challenges, and opportunities.

During lunch, a short video, *Service Learning in Action*, was screened for faculty members to get a sense of what Dr. Maria Claver's students experience in her Service Learning



gerontology course. Afterward, a faculty panel comprised of faculty from across campus (Rigoberto Rodriguez, Lynn Dymally, and Maria Claver) was moderated by Dr. Juan M. Benitez. Faculty panelists presented on their different community engagement models and approaches and shared some of the challenges and opportunities that they had experienced in the coordination and implementation of their projects. This was followed by an energetic question & answer session with all of those in attendance.

The day ended with a large group discussion on how to stay connected, next steps in implementing projects, and a recommendation for the creation of an on-going faculty peer support group to provide faculty more opportunities to stay in touch, and disseminate information and resource sharing.

Thank you to the CCE team and everyone that participated in making our first Community Engagement Institute a great success.



Please “Like” Us!

Social Action through Social Media

It’s increasingly difficult to ignore the impact and influence of social media in today’s society, but for many it is still equated with homemade video clips of crazy pet tricks, kamikaze cartoon birds catapulting themselves at pigs, and a proliferation of virtual farmers. Social media however, is also becoming a valuable resource for community engagement, advocacy and other social action.

Environmentalists can connect through Facebook with groups like the [Surfrider Foundation—Long Beach Chapter](#) and [Wetlands & Wildlife Care Center](#). If you’re all about sustainability, did you know [Long Beach Grows](#) or [The Long Beach Depot For Creative ReUse](#)? For those whose passion is for economic justice, there’s the [Long Beach Coalition for Good Jobs & a Healthy Community](#) and the [Long Beach Affordable Housing Coalition](#). If you want to understand homelessness in Long Beach, you can hear first-person accounts on YouTube by documentarian [Jack C Smith](#).

Social media not only addresses social issues but also addresses ways to *approach* those issues. To find models and guidelines for developing strong partnerships between the community and local university, look to [Community-Campus Partnerships for Health](#) for best practices. For a community perspective on community-based research, watch this [video](#) from Ohio State University. And if you want to know what is important to other CSU campuses, visit the [CSU Chancellor’s Office Center for Community Engagement](#) Facebook page.

While you won’t find new Farmville neighbors at the CSULB Center for Community Engagement Facebook page (www.facebook.com/csulbccce), you will find neighbors there who share your interests and passion for community engagement.

(A Message from the Director, Continued from page 1)

Planning Coordinator, charged with bringing the BHC: Long Beach AmeriCorps program to fruition. Nancy is working with the HSIAC grant at the Villages at Cabrillo to support the grant’s program evaluation activities.

Lastly, this past April 21st we offered our first Community Engagement Institute, with over 34 faculty members participating in our half-day event; reinvigorating our continued support to faculty and students in their community engagement efforts.

We look forward to a productive summer 2011 and another successful upcoming academic year, even during these challenging economic times, as we continue to make strides in *bringing our communities and university together...*

Saludos,



Dr. Juan M. Benitez

Looking forward to 2011-12

The new academic year is already on the horizon, bringing with it a number of exciting initiatives for CSULB through the Center for Community Engagement. Here are a few highlights:

- **Service-Learning and Community Engagement.** Maria Claver, Assistant Professor in Gerontology, will be joining the CCE this fall as a Faculty Fellow to support service learning initiatives at CSULB. Dr. Claver will provide support for faculty interested in integrating service learning into their courses as well as current service learning faculty seeking to re-invigorate or expand their service learning. She will also be helping the CCE to establish online/e-Learning tools and resources around service learning and community engagement. *See our Faculty Spotlight on page 2 to learn more about Maria Claver.*
- **California Community Foundation’s El Monte Community Building Initiative.** Beginning June 2011 CSULB will provide training and coaching to emerging community leaders—residents from formal and informal grassroots and nonprofit organizations operating in El Monte—on leadership development, organizational capacity, community projects, and policy and systems in three target neighborhoods in the community of El Monte.
- **California Community Foundation’s Civic Engagement Leadership Development Program in Southeast Los Angeles.** Beginning July 2011, this two year initiative will seek to build resident capacity for civic engagement through a “Civics Leadership Academy,” focusing on local government and governance, for community members of eight cities in the southeast region of Los Angeles County.
- **The California Endowment’s Building Healthy Communities: Long Beach.** CSULB continues to support community members’ efforts to impact the central/west Long Beach area as part of a ten-year place-based initiative to effect positive systemic and policy change for a healthier community. Priorities include health-promoting land-use, transportation and community development; reduction of violence in homes and neighborhoods; healthy youth development; and improving community health through economic development.

Student Staff, 2010-11

Thanks for all of your hard work!!!



Esperanza Martinez-Montoya
Position: In-Office Student Assistant

I am a single mom of four wonderful boys. I am a film and electronic arts major student. I love interacting with people. I want to focus on a documentary tack to be able to reach out in the community about awareness and prevention of domestic violence through mass media such as film and television production.



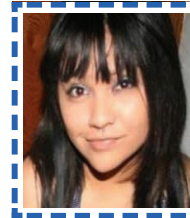
Hector Morales
Position: In-Office Student Assistant

I grew up and live in the city of Santa Ana. I attended Middle College High School and received my high school diploma with my Associates degree from Santa Ana College. I am 18 years old and I enjoy relaxing on my free time and maintaining my saltwater fish tank. I enjoy coming to school and meeting new people and hanging out with my friends.



Evelyn Guevara
Position: In-Office Student Assistant

I'm a college sophomore majoring in Human Development. I'll also be getting a minor in Psychology. I am 100% sure I will be going to graduate school to get a Master's in Occupational Therapy. It's the next best thing to my dream job which is being a famous singer but I have the worst singing voice you'll ever hear so I'm striving to do what I can.



Felicia Castillo
Position: Database Student Assistant

I'm a freshman here at Long Beach. I graduated from Hawthorne High School. My major is Mechanical Engineering. I just finished up an internship at The Aerospace Corporation in El Segundo. I was on a Robotics Team for 4 years, I did programming and 3D modeling as well as machining. I am Hawaiian/Filipino/Salvadorian.



Miguel Rojas
Position: In-Office Student Assistant

My name is Miguel. I was born and raised in San Diego. I am a first year Spanish M.A. student at CSULB. I graduated in May 2010 with a B.A. in Spanish and French from Humboldt State University. I loved the redwoods and small town feel of Humboldt but after 5 years I'm happy to be back in sunny So Cal. Love to hang out with family and friends and I don't mind being by myself.



Ricardo Mora
Position: CSP Student Assistant

My name is Jose Ricardo Moran, currently I have a Bachelor of Arts from UCLA in Spanish and am currently enrolled at California State University Long Beach pursuing my M.A. in Spanish as well.



Guadalupe Osuna
Position: Oasis Community Center, Peer Health Educator

I was raised in Huntington Park and moved a couple of times since then. I recently moved here to Long Beach and enjoy the city very much. I am the youngest of five siblings. I enjoy playing volleyball even though I am not the best player.



Jorge Molina
Position: CSP Student Assistant

I am a freshmen here at CSULB. I am currently undeclared but if I were to pick a major, I would be interested in pursuing something in math or education. I graduated from John C. Fremont High School.



Vivian Cai
Position: Oasis Community Center, Computer Lab Assistant

I have been working with the CCE since my freshman year, 2008. Interior Design is my major and Applied Math is my minor. I was born in China, and I speak Cantonese and Mandarin. I immigrated to the United States in 2003.



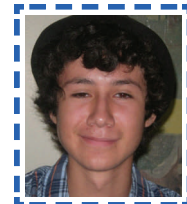
Juan Velez
Position: In-Office Student Assistant

I am a sports photographer for Cerritos college and the CCCAA (California Community College Athletic Association). I enjoy listening to music and will often just sing a song in my head for hours. I obtained my B.A. in Human Services and specialized in Mental Health in CSU Fullerton.



Tami Ross
Position: Bethune Academic Mentor for Fall 2010 & Long Beach BLAST Mentor Spring 2011

I am a first generation college student currently attending CSULB. I am working towards my BA and credential in Early Childhood Education. I enjoy reading and I have a passion for working with children.



Nestor Hermosillo
Position: Oasis Community Center, Life Skills Workshops

I am a CSULB Freshman. I plan to major in Psychology and Minor in Math. I was mostly raised in Southern California, except for moves to other states like Arizona, Nevada, Illinois, and time in Mexico. I am proud of my Mexican heritage and culture.

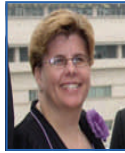


Anna Silva
Position: CSP Student Assistant

I attended UCSD where I obtained my Bachelor's degree in Ethnic Studies. I am currently pursuing the Multiple Subject Credential which will allow me to pursue a teaching career in low income communities.

CCE Staff

Carina Sass
Associate Director
(562) 985-2376
csass@csulb.edu



Dr. Juan Benitez
Executive Director
(562) 985-7324
jbenitez@csulb.edu



Carmen Arreola
Administrative Support
Coordinator
(562) 985-7019
marreol3@csulb.edu



Monica Delgado
Community Engagement
Support Coordinator
(562) 985-2307
mdelgado@csulb.edu



Kendra Jennis
Long Beach AmeriCorps
Planning Coordinator
(562) 985-7369
kjennis@csulb.edu



CCE
Center for Community
Engagement
CALIFORNIA STATE UNIVERSITY, LONG BEACH

Academic Services Building, Room 127
Long Beach, CA 90840-2007
Phone: (562) 985-7131
Fax: (562) 985-2129
Mailstop: 2007
Email: cce@csulb.edu

Visit us on the Web at
<http://www.csulb.edu/cce>

And also on Facebook at
<http://www.facebook.com/csulbcce>

Faculty Fellows



Dr. Lynn Dymally
2010-11
CBA Fellow for Economic
Development
ldymally@csulb.edu



Dr. Gary Hytrek
Fall 2010
Community-based
Participatory Research
ghytrek@csulb.edu



Dr. Malcolm Finney
Fall 2010
HSIAC Community-based
Participatory Research
mfinney@csulb.edu



Dr. Rigoberto Rodriguez
2010-11
Community Development
rrodri14@csulb.edu

Volunteer Sign-up!



Please print clearly. Return form to Academic Services, Room 127

Name: _____ Major: _____

Email: _____ Phone: _____

School Standing: Freshman Sophomore Junior Senior Graduate Alumni Staff Faculty

I heard about the CCE from: _____

I am interested in the following areas(s) of service (check all that apply):

Women, Families & Children

- Youth issues
- Women's Issues
- Tutoring, mentoring, learning disabilities or other educational services

Medical & Health Concerns

- HIV/AIDS
- Mental and/or physical disabilities
- Aging/elderly

On-campus activities & events

Human Rights

- Poverty and homelessness
- Immigration or civil rights issues
- Language and/or cultural affairs
- Lesbian, gay, bisexual, transgender, intersexual and queer issues

Environmental/Sustainability Issues

- Go Green! And global warming concerns
- Animal rights
- Physical labor, including construction, building, planting, etc.