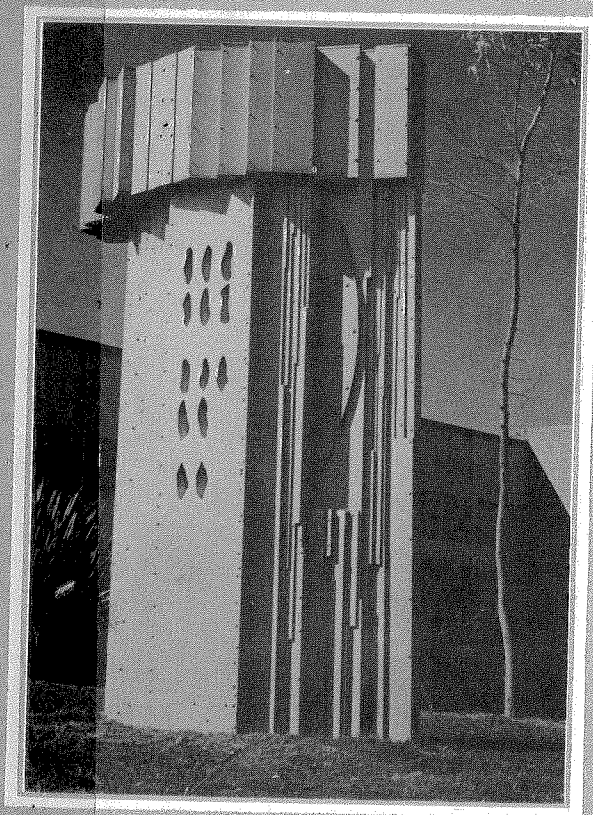


25TH ANNIVERSARY



CALIFORNIA STATE
UNIVERSITY
LONG BEACH
BULLETIN
1974-1975 UNDER-
GRADUATE STUDY

The California State University and Colleges

California State University or Colleges. Credit in summer sessions may be substituted for regular session unit requirements on a unit for unit basis. Extension credit or credit by examination may not be used to fulfill the minimum residence requirement.

11. Faculty Approval

Proficiency of a student in any and all parts of a curriculum is properly ascertained by the faculty of the University. A favorable vote of the faculty shall be required to make a student eligible to receive a degree.

12. Election of Regulations for Degree Requirements

A student remaining in continuous attendance and continuing in the same curriculum in the University may elect to meet the graduation requirements in effect either at the time of his entering the University or at the time of his graduation therefrom, except that substitutions for discontinued courses may be authorized or required by the proper University authorities.

The term "continuous attendance" means attendance for a regular academic year, except where such attendance is interrupted by illness or by military service.

Failure to remain in continuous attendance will mean that the student must meet the regulations current at the time of resuming the degree program, or those applicable at the time of graduation. A change in the major for the degree automatically carries with such a change the acceptance of the current regulations pertaining to the new course of studies.

GENERAL EDUCATION REQUIREMENTS

A candidate for a bachelor's degree at California State University, Long Beach must complete a minimum general education requirement of 40 semester units. The student must complete not less than six units in each of the categories I to IV and not less than a total of 32 units in categories I to V. In categories I to IV, no more than nine units in the category in which the student's major is listed may be used to satisfy general education requirements. No courses in the student's major department may be used to satisfy the 40 units of general education with the exception of those in category V.

Various ethnic studies courses offered by Black Studies, Mexican-American Studies, Asian American Studies and American Indian Studies may be used to meet appropriate general education requirements. Not more than 15 units may be taken in any single department or ethnic studies area.

Lists of courses and the categories for which they have been approved are available at department offices and the Information Desk.

If an interdisciplinary course qualifies for credit in more than one general education category, the student may choose which requirement he wishes the course to fulfill, if he makes this choice no later than the end of the semester preceding anticipated graduation.

I. *Natural Science*—Two or more courses (totaling six or more units) in the Departments of Biology (which includes anatomy and physiology, biology, botany, entomology and zoology); Chemistry; Geology; Microbiology or Physics (which includes astronomy and physical science). At least one laboratory science course must be included.

Courses in departments, programs or areas, other than those specified above, which earn students credit in this category are expressly identified as carrying category I credit in this *Bulletin* and in the *Schedule of Classes*.

II. *Social Sciences*—Two or more courses (totaling six or more units) in the Departments of Anthropology, Economics, Geography, History, Political Science, Psychology, Social Welfare or Sociology or offered by the Center for Urban Studies, exclusive of any courses chosen to satisfy the requirements of U.S. History, Government and Constitution, included in category V.

Courses in departments, programs or areas, other than those specified above, which earn students credit in this category are expressly identified as carrying category II credit in this *Bulletin* and in the *Schedule of Classes*.

III. *Humanities*—Two or more courses (totaling six or more units). One of these must be either a philosophy course (offered by the Philosophy Department), a religious studies course (offered by the area of Religious Studies) or a literature course offered by one of the following departments: English, Comparative Literature, French-Italian, German, Russian and Classics or Spanish-Portuguese.

A second course in this category must be an appropriate course in one of the following departments: Art, Dance, Music or Theatre Arts. (The departments named will decide which of their courses are appropriate.)

Courses in departments, programs or areas, other than those specified above, which earn students credit in this category are expressly identified as carrying category III credit in this *Bulletin* and in the *Schedule of Classes*.

IV. *Basic Communication*—Two or more courses (totaling six or more units) in English composition, foreign language (other than literature courses), journalism, mathematics, radio-television, speech communication or statistics, exclusive of any course chosen to satisfy the English composition requirement included in category V.

Courses in departments, programs or areas, other than those specified above, which earn students credit in this category are expressly identified as carrying category IV credit in this *Bulletin* and in the *Schedule of Classes*.

V. *Special Subjects*—One course in United States history; one course in United States government and Constitution (Political Science Department); and one course in English composition. The student has the option of receiving credit by examination; departments

will make such examinations available. A student who fails any such examination has the option of repeating the examination without penalty, or taking the course(s) which satisfy the requirement. A student who has met any of these requirements prior to enrollment at CSULB is exempt. Unit credit (to be included in the 40-unit general education requirement total and in the total number of units required for graduation, but not in the student's grade point average) shall be granted for satisfactory completion of examination in these subjects. Credit by examination, however, is subject to conditions specified in this *Bulletin*.

- VI. *Optional Electives*—A maximum of eight units may be selected from courses offered by any departments other than those in the School of the student's major. However, units in health science and physical education may be elected under this option by all students except health science and physical education majors.

GRADUATION WITH HONORS

Cum Laude—A student eligible for a bachelor's degree who has attained an overall grade point average of 3.0 on all college units attempted may be graduated *Cum Laude* provided that he has also completed a minimum of 45 units at this University with a 3.0 average or higher.

Magna Cum Laude—A student eligible for a bachelor's degree who has attained an overall grade point average of 3.5 on all college units attempted may be graduated *Magna Cum Laude* provided that he has also completed a minimum of 45 units at this University with a 3.5 average or higher.

Summa Cum Laude—A student eligible for a bachelor's degree who has attained an overall grade point average of 3.75 on all college units attempted may be graduated *Summa Cum Laude* provided that he has also completed a minimum of 45 units at this University with a 3.75 average or higher.

HONOR LISTS

Undergraduate students exhibiting outstanding scholastic achievement are honored by being included on the President's or Deans' Honor List. Certificates are awarded once a year after the spring semester. Full-time undergraduate students who have completed 12 or more units each semester during the current academic year are considered. Those with a GPA of 3.50 to 4.00 for the current academic year are included on the President's List, those with a GPA of 3.00 to 3.49 are recognized by the Dean of the School in which the student is a major. Certificates for undeclared majors are sent by the Office of Executive-Student Affairs, Dean of Students. Questions concerning eligibility for these lists should be directed to the Registrar's Office.

The University has created the Graduate Dean's List of University Scholars and Artists to recognize the top students among its graduate enrollment.

Nominees are selected annually by the Schools of Applied Arts and Sciences, Business Administration, Education, Engineering, Fine Arts and Letters and Science. The number considered from each school does not exceed one percent of the school's graduate student population.